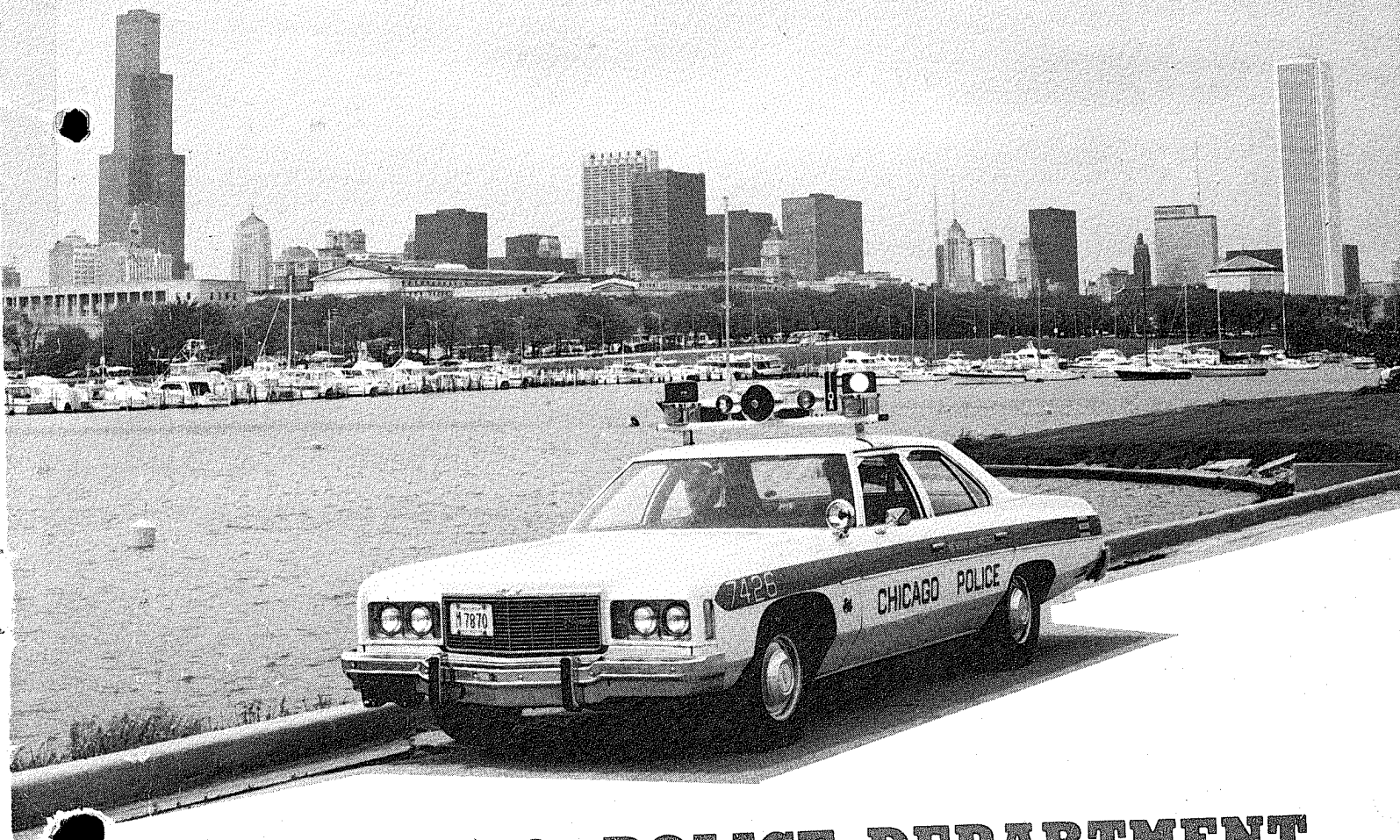


# STATISTICAL SUMMARY

1975



**CHICAGO POLICE DEPARTMENT**

**1121 S. STATE STREET / CHICAGO ILLINOIS 60605**

## TABLE OF CONTENTS

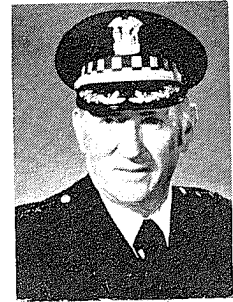
Message from the Superintendent . . . . .	3
Index Crimes for 1974, Comparison with Other Cities . . . . .	4
Highlights of 1975. . . . .	5
1. Index Crimes by Month . . . . .	8
2. Index Crimes by Periods . . . . .	8
3. Index Crimes by Type -- Offenses . . . . .	9
4. Index Crimes by Type -- Offenses & Clearances . . . . .	9
5. Index Crimes by Type -- Offenses, by Districts & Areas . . . . .	10
6. Murder Offenses by Type . . . . .	11
7. Aggravated Assault -- Offenses by Type . . . . .	11
8. Robbery, Burglary & Theft, Offenses by Types . . . . .	12
9. Auto Theft -- Offenses by Type . . . . .	12
10. All Arrests and Citations. . . . .	13
11. Arrests of Persons by Ages, Sex and Race. . . . .	14-15
12. Index Crime Arrests of Persons Under 25 by Percentages . . . . .	16
13. Traffic Accident Causes --- Arrests by Type of Violations . . . . .	17
14. Traffic Accidents by Type of Accidents. . . . .	17
15. Missing Persons . . . . .	18
16. Disposition of Juveniles . . . . .	18
17. Activities of Special Units. . . . .	18
18. Man - Hours for Special Events. . . . .	18
19. Community Services . . . . .	19
20. Communications . . . . .	20
21. Record Processing . . . . .	20
22. Field Inquiries . . . . .	20
23. Records Inquiries . . . . .	21
24. Identification . . . . .	21
25. Evidence and Recovered Property. . . . .	22
26. Crime Laboratory . . . . .	22
27. Automotive Pounds . . . . .	22
28. Animal Care . . . . .	22
29. Department Vehicles . . . . .	23
30. Training. . . . .	23
31. Budget Appropriations . . . . .	24
32. Salary Schedules . . . . .	24
33. Internal Affairs . . . . .	25
34. Office of Professional Standards. . . . .	25
35. Population and Land Areas . . . . .	26



**RICHARD J. DALEY**  
Mayor

1 July 1976

*Honorable Richard J. Daley  
Mayor of Chicago  
City Hall  
Chicago, Illinois - 60602*



**JAMES M. ROCHFORD**  
Superintendent

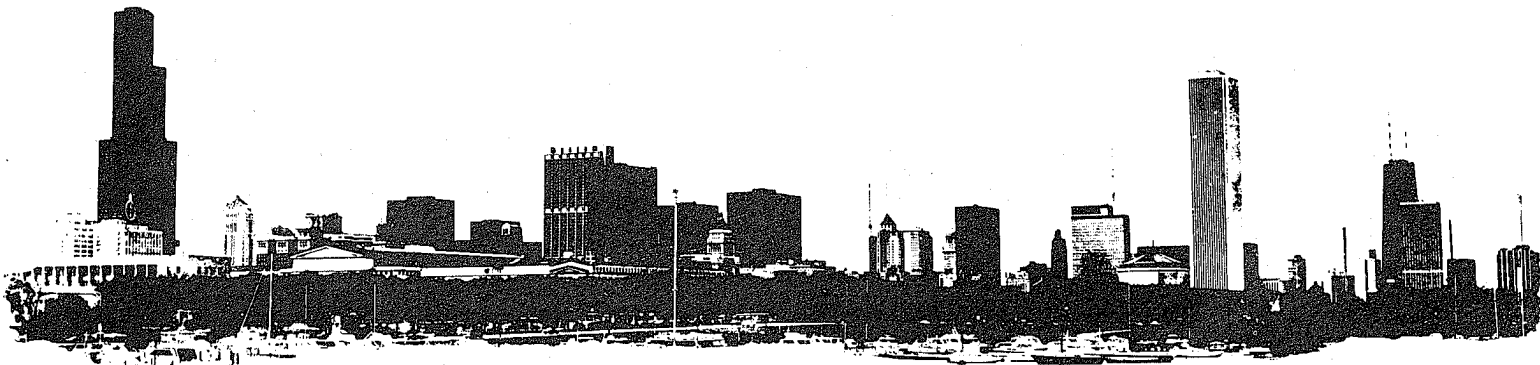
*Dear Mr. Mayor:*

*Submitted herewith is the annual report of the Chicago Police Department for 1975. This report is designed for reference use by governmental agencies at city, state and national levels and by others who may request information from the Department.*

*We are indebted to you, the City Council and other Department heads for continued support of our efforts to give Chicago the finest police department in the nation.*

*Sincerely,*

**James M. Rochford**  
Superintendent of Police



# 1975 Index Crime Rates Per 1,000 Population

JANUARY THROUGH DECEMBER 1975 \*

	Index Crimes Per 1,000 Population	Index Crimes January Through December 1975 *	Population**	Population Rank
1. Detroit, Mich.	103.0	155,687	1,511,482	5
2. Los Angeles, Calif.	79.3	223,404	2,814,152	3
3. Houston, Tex.	74.7	92,207	1,232,802	6
4. New York, N.Y.	73.8	581,247	7,867,760	1
5. CHICAGO, Ill.	70.0	235,852	3,366,957	2
6. Philadelphia, Pa.	43.1	84,196	1,948,609	4

\* SOURCE: 1975 Preliminary Annual Release By The FBI  
Dated March 25, 1976.

\*\* SOURCE: U.S. Bureau of Census - Final  
Census Report Issued By The  
Bureau of Census, Department of  
Commerce, Chicago, Illinois.

## JANUARY THROUGH DECEMBER 1975 INDEX CRIME RATES PER 1,000 POPULATION CITIES 250,000 AND OVER

CITIES*	INDEX CRIMES PER 1,000 POPULATION	INDEX CRIMES JAN.-DEC. 1975***	CITIES*	INDEX CRIMES PER 1,000 POPULATION	INDEX CRIMES JAN.-DEC. 1975***
1. Honolulu, Hawaii	135.2	43,949	28. Akron, Ohio	80.0	22,013
2. Phoenix, Ariz.	130.1	75,720	29. Rochester, N.Y.	79.7	23,595
3. Boston, Mass.	125.6	80,530	30. Minneapolis, Minn.	79.4	34,460
4. Tucson, Ariz.	120.5	31,699	31. Los Angeles, Calif.**	79.3	223,404
5. Miami, Fla.	118.8	39,831	32. Tulsa, Okla.	79.2	26,295
6. Oakland, Calif.	118.4	42,878	33. El Paso, Texas	78.4	25,225
7. Dallas, Texas	111.8	94,411	34. Baltimore, Md.	77.7	70,411
8. St. Louis, Mo.	111.5	69,401	35. Cleveland, Ohio	76.9	57,806
9. Portland, Oreg.	110.4	42,290	36. Wichita, Kansas	75.7	20,981
10. Tampa, Fla.	108.8	30,257	37. Fort Worth, Texas	75.2	29,590
11. Sacramento, Calif.	104.7	26,610	38. Houston, Texas**	74.7	92,207
12. Detroit, Mich.**	103.0	155,687	39. Cincinnati, Ohio	74.2	33,639
13. San Jose, Calif.	98.8	44,082	40. New York, N.Y.**	73.8	581,247
14. Atlanta, Ga.	98.3	48,884	41. Norfolk, Va.	73.3	22,603
15. Denver, Colo.	97.8	50,387	42. Long Beach, Calif.	73.3	26,316
16. Columbus, Ohio	93.2	50,352	43. Nashville, Tenn.	73.2	32,828
17. Oklahoma, City, Okla.	91.6	33,540	44. Washington, D.C.	72.8	55,157
18. Newark, N.J.	90.5	34,572	45. Chicago, Ill.**	70.0	235,852
19. San Antonio, Texas	90.2	58,993	46. Omaha, Nebr.	68.5	23,772
20. San Francisco, Calif.	90.1	64,518	47. New Orleans, La.	67.1	39,799
21. Kansas City, Mo.	88.6	44,954	48. Jersey City, N.J.	65.3	17,068
22. Austin, Texas	87.9	22,171	49. Louisville, Ky.	64.1	23,147
23. Memphis, Tenn.	87.0	54,302	50. Buffalo, N.Y.	61.8	28,651
24. Seattle, Wash.	86.8	46,110	51. Pittsburgh, Pa.	61.2	31,828
25. San Diego, Calif.	86.1	60,022	52. Indianapolis, Ind.	56.2	41,913
26. Birmingham, Ala.	84.5	25,459	53. Milwaukee, Wis.	53.7	38,517
27. Jacksonville, Fla.	84.4	44,700	54. Philadelphia, Pa.**	43.1	84,196

\* Cities (54) over 250,000 population ranked as to Index Crimes per 1,000 population.  
Toledo, Ohio did not appear in the FBI Press Release.

\*\* Cities with 1,000,000 or more population.

\*\*\* Source: 1975 - Preliminary Annual Release by the FBI dated March 25, 1976.

# A YEAR OF PROGRESS . . HIGHLIGHTS OF 1975

The Chicago Police Department's most outstanding accomplishment during 1975 was reflected in the Department's crime reduction for the year.

The Federal Bureau of Investigation, in its 1975 annual report, cites Chicago as being the only city among the largest in the U.S., where total crimes decreased 6.4% at the same time nationwide figures showed a 9% increase. In addition, Chicago decreased its violent crimes by 12.6% while nationwide figures showed a 5% increase.

And...the department achieved this enviable record despite being undermanned by approximately 1,000 police officers, and despite the large increase of citizen calls for police service.

## OVER FOUR MILLION CALLS FOR POLICE SERVICE

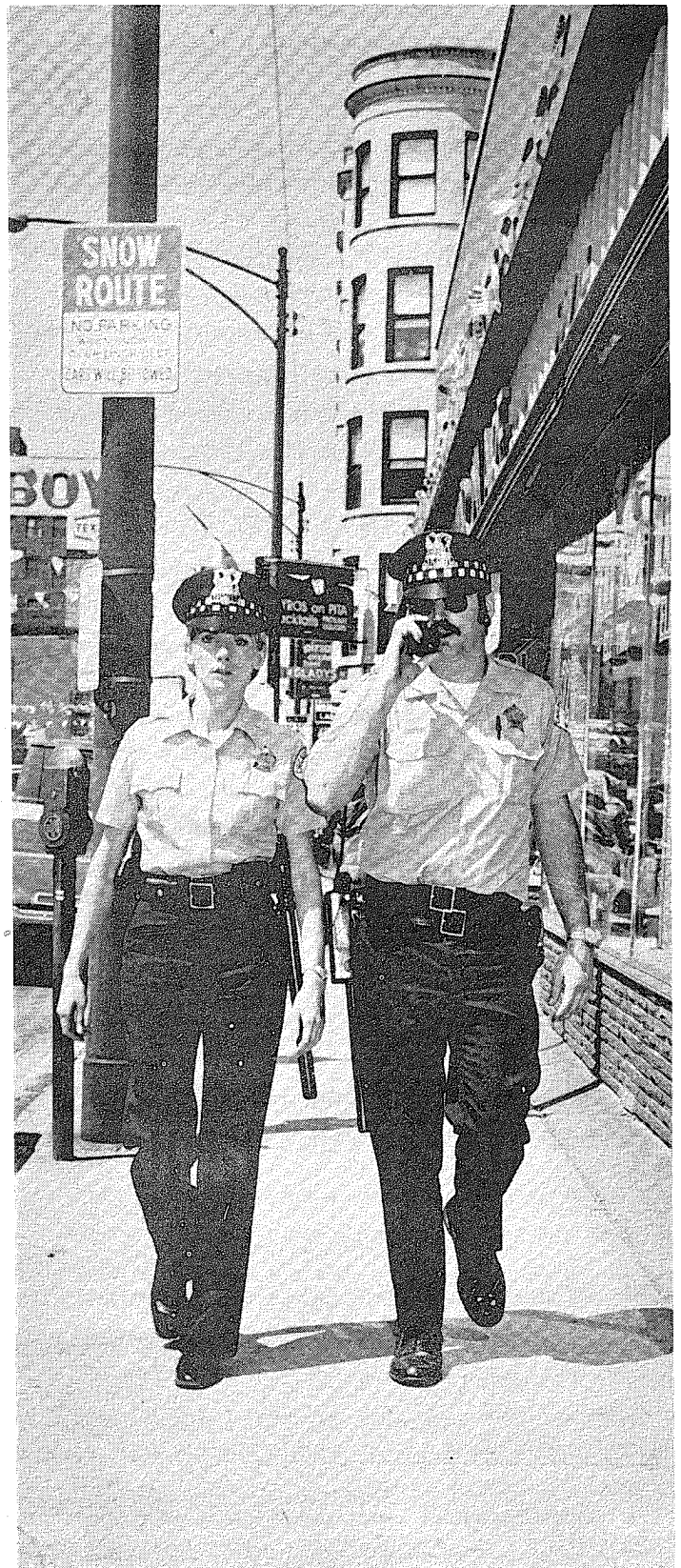
The workload of the department has been increasing at a staggering rate each year. Last year the Chicago Police handled over 4½ million citizen calls for help and dispatched cars on 2½ million calls for police service. The remainder of the calls were advisory, for information or referrals to other city departments.

Let's take a look at Chicago's record compared to other large cities of comparable populations. Of the six largest U.S. cities with populations of one million or more, Chicago ranked fifth. While crime in Detroit, Los Angeles, Houston and New York was spiraling upwards, Chicago's crime rate was declining.

And, in comparison with the 54 largest American cities with populations of 250,000 and over, 44 cities reported higher rates in major crimes than Chicago for 1975.

The reason for the crime decrease can be attributed to several factors---the most important being Chicago's hard-working, dedicated police officers. While most of the credit goes to the Patrol Division, we cannot forget the outstanding efforts of all the other units in the department. Also, our special employment program, created to compensate for our manpower shortage permitted sworn personnel members to work on their days off or furloughs. As many as 600 additional officers were employed each day for preventive patrol under this program.

Another factor was the police officers' high morale, their willingness to perform professionally at a high level of productivity with enthusiasm and extra effort.



*Police Officer Jeri Alexander (left) and her partner, Frank Thornton 12th District. Officers patrol their beat on foot when not on radio assignments for police service.*



The results are obvious: Criminal arrests were approximately 10% higher than the year before.

Our "Operation Saturation" program to provide heavier and strategic police patrols on Chicago's public transportation system resulted in a 50% decrease in CTA crime during 1975.

The Mass Transit unit challenged 127,000 persons regarded as suspicious, made 48,170 arrests for various crimes and confiscated 1,606 guns. When viewed in the perspective of the vast scope of the CTA system, these statistics are even more impressive when you consider that the system carried 650 million riders last year - - - approximately two million per each workday.

Under the expanded anti-crime program, the Department saturated the entire CTA system, utilizing the Mass Transit Unit, all the Special Operation Group area units as well as many voluntary police officers working special employment, on days off or furlough periods. The broadened program was directed at crime contributing incidents such as conditions of vandalism, and offenses such as smoking, drinking and harassment of riders which occurred in stations, on platforms and trains, as well as criminal acts.

Chicago Police not only provided emergency services, prevented crime and arrested criminals--but they devised and implemented new crime fighting techniques and improvements in Department operations, to provide more efficient and quicker service to the community and curtail crime.

The following are some of the highlights of 1975: All police districts and areas were equipped with computer terminals to give police officers and investigators direct and immediate access to computerized files on wanted persons and stolen property as well as to State Police and FBI computer files relating to crime information.

### NEW PATROL PROGRAMS

Two new programs were implemented in the Patrol Division: The Supervisory Sector Concept, which provides for a stronger, more productive sergeant supervision of police officers; and the "Patrol Specialist," selected experienced police officers, to work with recruits during their advance field training in districts.

Two hundred recruits were trained at the Chicago Police Academy and graduated during 1975. This group was the first to graduate since March, 1973, when hiring was temporarily halted because of pending litigation

in the federal court.

A new civil service examination for police officers, the first to be open to both men and women was held in April, with the results posted in the fall of 1975.

Also in April, the Department restyled its motor fleet, giving the Department a new image. Squad cars and squadrols are now all white with a blue stripe and red lettering.

The role of women in policing continued to expand. Adopting the title of police officer for sworn members, the Department afforded women the opportunity to compete for assignments in all units throughout the Department and to be eligible for future promotions.

In June, Superintendent James M. Rochford appointed 176 temporary Sergeants who were sorely needed in first-line field supervisory positions throughout the Department.

### NEW POLICE FACILITIES ADDED

To provide more facilities and better police service to Chicago citizens, the Chicago Police opened two new Area/District Police facilities--Area 4/11th District, at Harrison and Kedzie, and Area 6/19th District complex, at Western and Belmont Avenue, during the year. In addition, the 22nd District (Morgan Park), closed in 1961 when the number of Police Districts were reduced from 41 to 21, was reactivated and officially reopened. Another station, the 23rd District (Town Hall), at Halsted and Addison Street, was activated after the 19th District moved from this building to new quarters.

For a more efficient and expert investigation of fire incidents in our city, the Bomb and Arson Unit was reorganized and consolidated with the Fire Department. The Unit was expanded to include 11 Fire Department Arson Investigators now detailed to the Chicago Police Department. Further, a special arson hotline number for citizens to report conditions or suspects who threaten the community through arson, was established.

The Department stepped up its integrated Foot Patrol in shopping areas throughout the city.

The Chicago Police Mounted Unit was increased from 14 men to 25, and from 10 to 24 horses to provide greater protection for Grant, Lincoln and outlying park areas.

The Chicago Police and Circuit Court of Cook County increased the use of court summons instead of arrests for minor offenses. This method eliminated the process of making out arrest reports, fingerprinting, and possible confinement in police facilities for minor offenses, thus

reducing paper work and relieving police officers for more preventive patrol.

In 1975, two new programs which were started the year before, observed their first year of operation. The Office of Professional Standards, under the direction of three civilian administrators - a black, white and latino, and 33 civilian investigators, have the responsibility of investigating all allegations of excessive force, corruption and bribery of police officers.

The Department's Social Referral Program, with a professional counselor in charge, to assist police officers whose stress-related problems might affect their job performance, provided counseling service to over 300 officers and/or their families.

Most important, was the launching of an innovative new citizen Beat Representative Program in 22 districts throughout the city.

A team effort with citizens and police officers working together in their community to prevent and reduce crimes, the program affords both the opportunity to meet regularly to discuss community problems and work out solutions.

Additionally, the Preventive Programs Division conducted a total of 998 in-depth surveys for residential, (homes and hi-rise apartment buildings) business and industrial firms, and provided specific complete suggestions to improve security.

#### **WITNESS NOTIFICATION PROGRAM**

The Department created and implemented a new witness computer notification program designed to reduce the number of cases which previously were court-discharged because witnesses failed to appear and give testimony.

Pedestrian and vehicular traffic was also of grave concern to the Department. Chicago ranked third in safety among cities with over one million population. Enforcement of hazardous moving violations in 1975 totaled 697,731, or an increase of 8% when compared with the 645,807 arrests made the year before.

In order to improve police-citizen relationship when a citizen is stopped for traffic violation, a program using cassette tape recorders was instituted to document the conversation between police officers and violators.

In addition, civilian School Crossing Guards who man street corners during the school year, were utilized to augment existing traffic control forces at busy loop intersec-

tions during the summer months of 1975.

#### **SPECIAL UNIT FOCUSES ON TRAFFIC SCOFFLAW**

A special traffic warrant unit was established to serve warrants on out-of-town motorists who ignored traffic citations. Working in cooperation with sheriffs of several counties, including Cook, DuPage, Kane, Lake, McHenry and Will County, members of this unit are able to apprehend traffic offenders who have outstanding, overdue citations.

An accelerated campaign to crackdown on trucks, semi-trailers and busses on Chicago expressways was launched in an effort to improve safety and reduce accidents. In June, when the program was announced, Chicago had already experienced 1,171 expressway accidents involving these vehicles. In December, after six months of enforcement under the accelerated program, there were only 353 accidents on expressways, with 2,434 citations for various violations issued.

For added efficiency and economy, the Department consolidated the Mobile Crime Unit and Evidence Technicians Section into one crime scene processing section in the Criminalistics Division.

Also, the Auto Theft Section was redesigned to eliminate long standing and expensive duplication of effort between patrol officers and auto theft investigators. After several months of study, the unit was reorganized into one Central Auto Theft Unit operating out of Area 4 Headquarters. The reorganization also resulted in the redeployment of five lieutenants, 14 sergeants and 90 investigators to other units, thus helping to alleviate a critical shortage of personnel.

#### **INCREASED CIVILIANS ON DESK ASSIGNMENTS**

The Department's policy of increasing the number of civilians in assignments relieving police officers from clerical-related or desk duties when possible, continued last year. Civilians were hired to work in the Auto Pounds, Equipment and Supply and Animal Care Sections. We also added 181 civilians, (male and female) to staff District and Central Police Headquarters detention facilities, thus making more officers available for street patrol. Ninety per cent of these civilians were minorities.

Finally, a physical fitness program was initiated city-wide in various police facilities. Over 2,000 officers already have availed themselves of this service thus far.

# TYPES OF DATA PRESENTED

*The tabulations and graphs which follow give data on crimes reported, on arrests and other results of police performance.*

*The basis of reporting the data is identified as either the 12-month calendar year, or the 13-period, Chicago Police year --- each Period contains 28 days. Differences may be seen on comparing Tables 1 and 2 and Tables 3 and 4.*

*12 - MONTH YEAR (1 January through 31 December, 1975)*

*The 12 - Month calendar year (365 days) is used where the date relates to the FBI, City of Chicago and certain other reports.*

*13 - PERIOD YEAR (9 January 1975 through 7 January 1976)*

*The 13 - period year is used so that valid comparisons can be made according to workload. Each of the 13 - periods has 28 days, and each of the four weeks in a period begins on the same day of the week. As a result each week and period, with the same number of days, has the same number of Fridays, Saturdays, and Sundays, when peak work loads occur.*

## CRIMES REPORTED

### 1. Index Crimes by Months

Calendar Year (1 January through 31 December)

#### MONTHS

January . . . . .	19,053
February . . . . .	15,793
March . . . . .	17,718
April . . . . .	16,307
May . . . . .	19,725
June . . . . .	21,382
July . . . . .	22,806
August . . . . .	21,964
September . . . . .	21,404
October . . . . .	20,895
November . . . . .	19,037
December . . . . .	19,768

TOTAL . . . . . 235,852

### 2. Index Crimes by Periods

13 Period Year ( 9 January 1975 Through 7 January 1976)

#### Periods

#### Period Ending Dates

1st, (5 February) . . . . .	17,214
2nd (5 March) . . . . .	15,330
3rd (2 April) . . . . .	15,907
4th, (30 April) . . . . .	16,384
5th, (28 May) . . . . .	17,988
6th, (25 June) . . . . .	18,830
7th, (23 July) . . . . .	20,001
8th, (20 August) . . . . .	20,613
9th, (17 September) . . . . .	19,616
10th, (15 October) . . . . .	18,582
11th, (12 November) . . . . .	18,350
12th, (10 December) . . . . .	17,467
13th, (7 January) . . . . .	17,144

TOTAL . . . . . 233,426



### 3. Index Crimes by Type—Offenses

13 Period Year ( 9 January 1975 Through 7 January 1976)

Murder .....	797
Rape .....	1,587
Aggravated Assault .....	12,384
Robbery .....	21,470
Burglary .....	46,588
Theft .....	117,372
Auto Theft .....	33,228
<b>TOTAL INDEX .....</b>	<b>233,426</b>



*1st District Officers George Schikora and John Skinkis, and Sgt. Hubert Holton, care for heart attack victim as they wait for an ambulance to arrive on scene.*

### 4. Index Crimes by Type—Offenses and Clearances

Calendar Year, (1 January through 31 December)\*

OFFENSES	Number	CLEARANCES**	
		Number	Percent Cleared
Murder .....	818	699	85.4
Rape .....	1,657	916	55.3
Aggravated Assault .....	12,514	9,050	72.3
Robbery .....	22,171	8,803	39.7
Burglary .....	47,299	11,192	23.7
Theft .....	117,909	29,665	25.2
Auto Theft .....	33,484	4,032	12.0
<b>TOTAL INDEX .....</b>	<b>235,852</b>	<b>64,357</b>	<b>27.3</b>

\*For 13 - period data, see Table 4

\*\*Solution of a crime. One arrest, death or other event may result in one or more clearances.

# 5. Index Crimes by District and Area

1975

13 Period Year ( 9 January 1975 Through 7 January 1976)

DISTRICT	MURDER	RAPE	ROBBERY	AGGRAVATED ASSAULT	BURGLARY	THEFT	AUTO THEFT	TOTAL
1	10	17	580	118	384	6737	866	8712
2	86	144	2362	1193	1886	3997	1179	10847
3	59	124	1705	761	3598	4834	1936	13017
21	43	86	1165	458	1270	5044	1087	9153
Area 1	198	371	5812	2530	7138	20612	5068	41729
4	42	86	1024	451	3482	6637	2485	14207
5	35	73	953	472	2863	5415	2305	12116
6	41	81	1114	387	2936	4675	2215	11449
22	17	29	385	153	1117	2688	969	5358
Area 2	135	269	3476	1463	10398	19415	7974	43130
7	47	122	1457	992	3318	4894	1657	12487
8	7	18	276	207	1479	5750	1455	9192
9	25	35	508	418	1645	5453	1051	9135
Area 3	79	175	2241	1617	6442	16097	4163	30814
10	46	69	1156	839	1973	3739	1273	9095
11	57	130	1359	1096	1815	4148	1333	9935
12	36	28	931	599	1015	4076	1253	7938
13	52	56	1396	826	2083	4980	1360	10753
Area 4	191	283	4842	3360	6886	16943	5219	37724
14	37	42	629	574	2136	5099	1444	9961
15	48	171	1232	744	2792	6154	2404	13545
16	3	16	163	90	944	4326	982	6524
17	10	13	236	212	1556	4584	992	7603
Area 5	98	242	2260	1620	7428	20163	5822	37633
18	40	81	1080	554	1813	7566	1422	12556
19	19	77	753	501	2858	7423	1690	13321
20	37	89	1006	739	3625	9153	1870	16519
Area 6	96	247	2839	1794	8296	24142	4982	42396
City Total	797	1587	21470	12384	46588	117372	33228	233426

## 6. Murder Offenses by Type

Calendar Year (1 January Through 31 December)

Number Killed .....	818	Location		
Weapons Used		Indoor .....		449
Firearms		Residence .....		324
Handguns .....	412	Place of Entertainment .....		40
Long Guns .....	60	Other .....		85
Unknown Type .....	80	Outdoor .....		369
Knives .....	144	Residence Area .....		32
Other Object or Substance .....	167	Street, Alley, Park, Open Lot .....		279
		Other .....		57
Motivation		Ages of Victims and Offenders		
Altercations .....	441		Victims	Offenders
Robbery, Burglary .....	176	0-5 .....	18	0
Sex - Perversion, etc. ....	7	6-10 .....	2	0
Other .....	57	11-15 .....	16	28
Undetermined .....	137	16-20 .....	105	186
Relationship to Victim		21-25 .....	144	237
Marriage (Legal or Common-Law) .....	75	26-30 .....	134	132
Other Familial .....	37	31-35 .....	87	51
Friends (Romantic, Neighbor, etc.) .....	143	36-40 .....	64	38
Other Acquaintance, Including Business .....	203	41-45 .....	65	33
No Relationship .....	159	46-50 .....	52	27
Relationship Not Established .....	201	51-55 .....	47	19
		56-60 .....	33	9
		61 & Over .....	51	9
		Unknown .....	0	196
		TOTAL .....	818	965

## 7. Aggravated Assault Offenses by Type

Calendar Year (1 January Through 31 December)

Gun .....	3,569
Knife or cutting Instrument .....	4,757
Other Dangerous Weapon .....	3,285
Hand, Fists, Feet, etc. (Aggravated) .....	903
TOTAL .....	12,514

## 8. Robbery Burglary and Theft Offenses by Type

Calendar Year (1 January Through 31 December)

	Number of Offenses	Value of Property Stolen		Number of Offenses	Value of Property Stolen
<b>Robbery</b>			<b>Theft</b>		
Streets, Alleys etc. . . . .	12,201	1,122,304	Purse Snatching. . . . .	8,890	603,974
Residential. . . . .	3,290	491,347	Bicycles. . . . .	10,603	194,013
Chain Store . . . . .	100	19,075	Auto Parts & Accessories . . . . .	31,997	803,529
Gas or Service Station . . . . .	476	84,773	From Auto - Other . . . . .	19,209	2,123,680
Bank. . . . .	43	69,411	Pocket Picking . . . . .	1,424	150,552
Other Commercial . . . . .	1,862	533,018	Shoplifting. . . . .	10,260	367,584
Miscellaneous . . . . .	4,199	713,881	From Coin - Operated Machines (Parking Meter, etc.) . . . . .	337	19,954
<b>TOTAL. . . . .</b>	<b>22,171</b>	<b>3,033,809</b>	Other from Buildings . . . . .	19,582	4,458,381
			All Other . . . . .	15,607	3,468,198
<b>Burglary</b>			<b>TOTAL. . . . .</b>	<b>117,909</b>	<b>12,189,865</b>
Residential					
Night . . . . .	11,086	5,111,973			
Day . . . . .	19,172	9,210,193			
Unknown. . . . .	3,766	2,072,647			
Non-Residential					
Night . . . . .	8,148	4,095,056			
Day . . . . .	2,747	1,465,068			
Unknown. . . . .	2,380	1,338,799			
<b>TOTAL. . . . .</b>	<b>47,299</b>	<b>23,293,736</b>			

## 9. Auto Theft Offenses by Type

Calendar Year (1 January Through 31 December 1975)

<b>Thefts</b>	
Including Attempts . . . . .	33,228
Not Including Attempts . . . . .	32,357
<b>Clearances</b>	
Number. . . . .	4,539
Percent Cleared. . . . .	13.7
<b>Recoveries</b>	
Motor Vehicles Stolen in Chicago	
Recovered Within City . . . . .	23,569
Recovered Outside City . . . . .	2,074
<b>TOTAL. . . . .</b>	<b>25,673</b>
Percent Recovered of Total Thefts . . . . .	77.2
Motor Vehicles Stolen Outside Chicago and Recovered Within City . . . . .	1,844

## 10. All Arrests and Citations

Calendar Year (1 January Through 31 December)\*

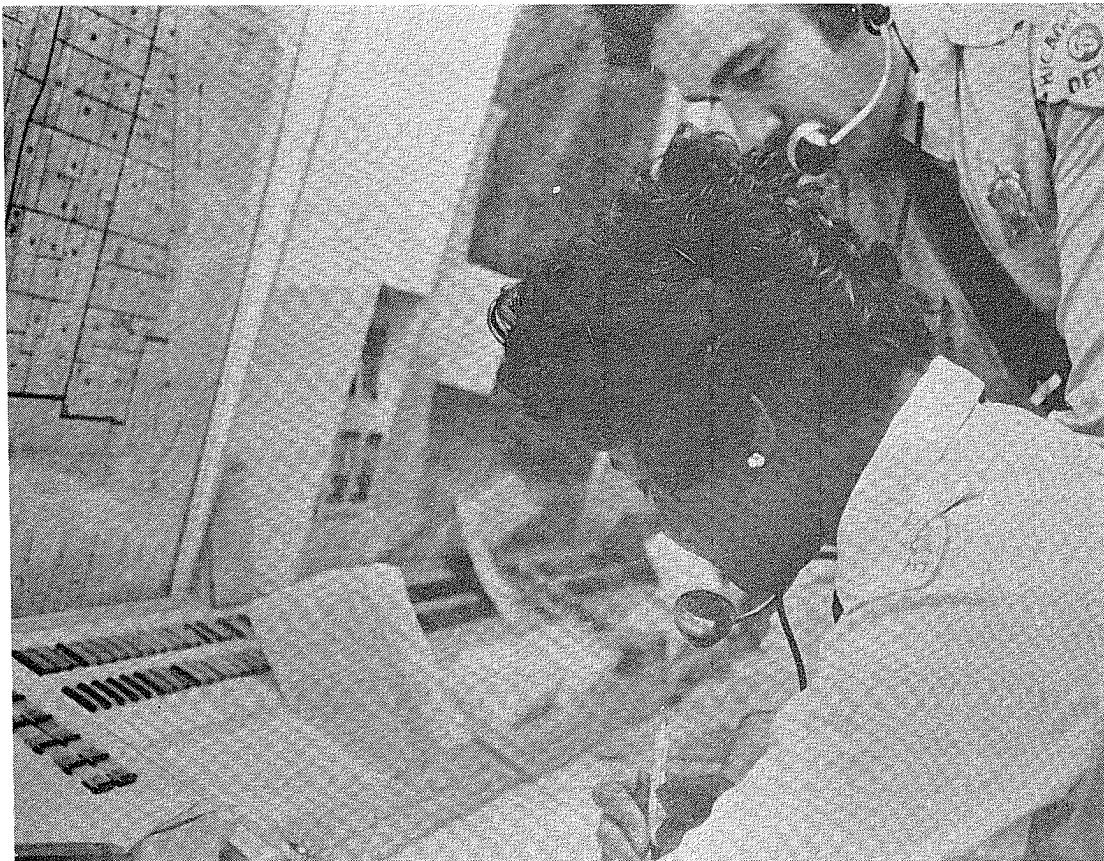
### Non-Traffic Violations

Index Crimes	Number	Percent
Murder .....	1,190	2.0
Rape .....	802	1.4
Aggravated Assault .....	3,946	6.6
Robbery .....	8,459	14.2
Burglary .....	11,147	18.8
Theft .....	30,081	50.6
Auto Theft .....	3,795	6.4
TOTAL INDEX .....	59,420	100.0
Other Non-Traffic .....	274,248	
TOTAL NON-TRAFFIC .....	333,668	

### Traffic Violations

Hazardous .....	697,731	18.4
Non-Hazardous .....	3,104,145	81.6
TOTAL TRAFFIC .....	3,801,876	100.00

\*See Table 11 for further breakdown



*Radio Dispatcher Ann Dawson handles emergency calls received from citizens in Police Communications Center.*

## 11. Arrests of Persons by Age, Sex and Race

Calendar Year (1 January Through 31 December)

(Include those released without having been formally charged)

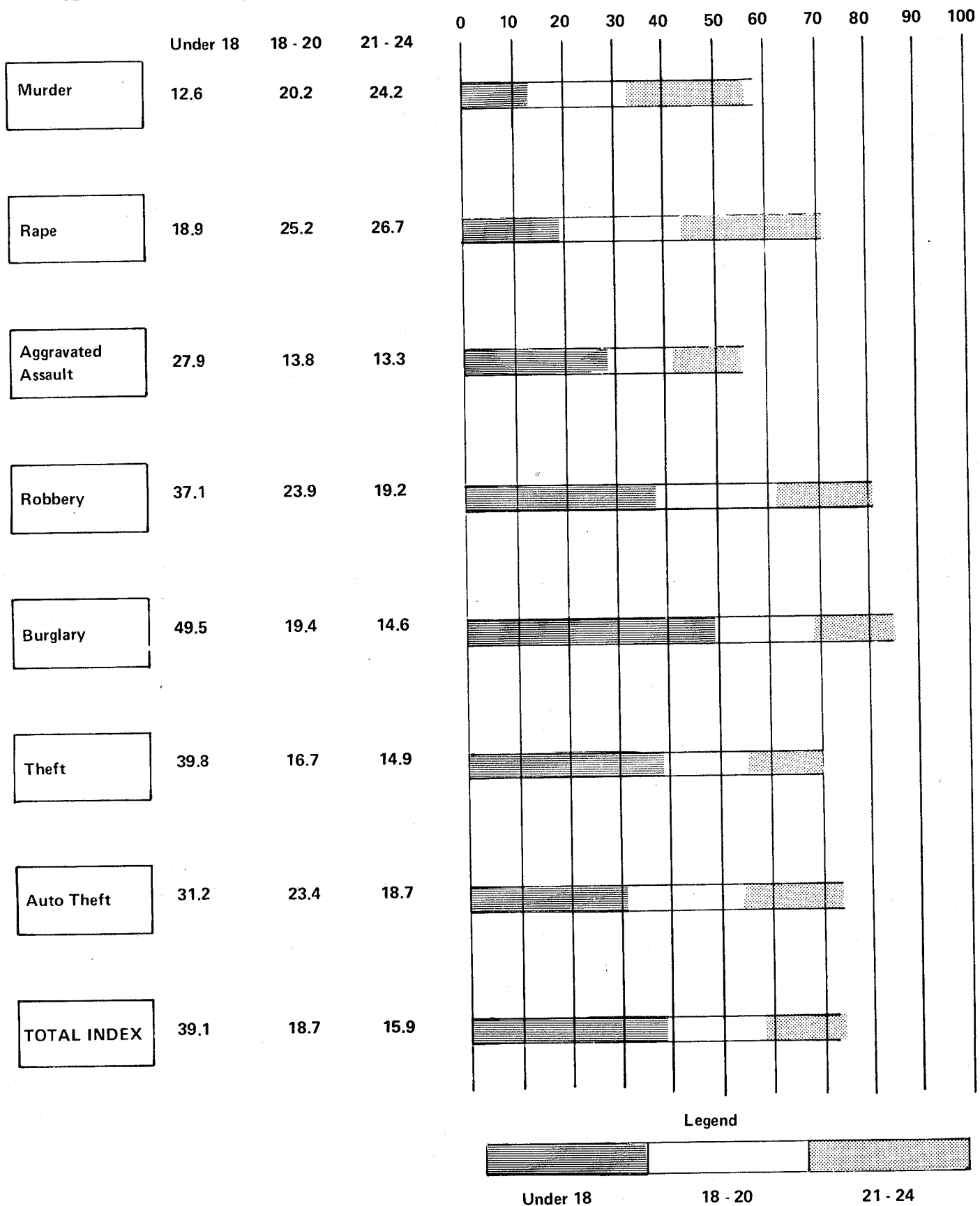
CLASSIFICATION OF OFFENSES	SEX	AGE						RACE							
		Under 18		18-20	21-24	25-44	45+	Total	SEX	White	Negro	Indian	Chi- nese	Japa- nese	All Other
		18	17	16	15	14	13								
Murder and Nonnegligent Manslaughter	Male	138	223	246	361	74	1042	Male	122	797	2				121
	Female	12	17	42	61	16	148	Female	19	121	6				2
Manslaughter by Negligence	Male	7	5	6	12	6	36	Male	11	21					4
	Female				1	1	2	Female	1	1					
Forcible Rape	Male	152	202	214	217	17	802	Male	85	658	1				58
	Female							Female							
Robbery	Male	2989	1922	1541	1505	72	8029	Male	719	6683	28				599
	Female	151	96	85	91	7	430	Female	54	341	2				33
Aggravated Assault (Return A-4a-d)	Male	906	505	473	1143	394	3421	Male	689	2254	11				467
	Female	195	41	52	187	50	525	Female	47	452	1				25
Burglary--Breaking or Entering	Male	5378	2097	1578	1639	127	10819	Male	2490	7066	23	2			1238
	Female	141	70	52	59	6	328	Female	88	211	1				28
Larceny-Theft (Except Motor Vehicle Theft)	Male	9668	4033	3612	6072	989	24374	Male	5127	17041	74	6			2126
	Female	2312	1000	861	1253	281	5707	Female	1076	4185	17				429
Motor Vehicle Theft	Male	1131	867	657	838	118	3611	Male	914	2309	6				382
	Female	53	22	53	55	1	184	Female	39	133	2				10
Other Assaults (Return A - 4e)	Male	3887	1825	1884	4021	836	12453	Male	3376	7500	34				1543
	Female	1043	190	246	581	145	2205	Female	417	1559	13				216
Arson	Male	92	16	17	47	8	180	Male	56	89					35
	Female	6	2	3	3	1	14	Female	4	7					3
Forgery and Counterfeiting	Male	1	4	5	14	2	26	Male	8	17					1
	Female		1	1	7		9	Female	3	3					3
Fraud	Male	1245	367	422	848	154	3036	Male	520	2358	5				153
	Female	149	98	129	233	23	632	Female	124	480	1	1			26
Embezzlement	Male					1	1	Male	1						
	Female							Female							
Stolen Property; Buying, Receiving, Possessing	Male	849	110	84	145	41	1229	Male	319	780	4				126
	Female	44	17	15	20	1	97	Female	25	62					10
Vandalism	Male	3561	791	599	943	165	6059	Male	2149	3084	20	4			802
	Female	202	53	67	114	27	463	Female	128	294	6				35
Weapons; Carrying, Possessing, etc.	Male	1472	1146	1671	4524	1574	10387	Male	1308	7945	16	2			1116
	Female	116	147	175	454	87	979	Female	112	819	1				47
Prostitution and Commercialized Vice	Male	71	320	521	1127	410	2449	Male	686	1559	2				202
	Female	185	2254	2960	470	54	6923	Female	1177	5601	9				136
Sex Offenses (Except Forcible Rape and Prostitution)	Male	197	177	184	223	139	1120	Male	405	545	9				161
	Female	103	22	24	39	6	194	Female	71	94	1				28
Narcotic Drug Laws	Male	3149	3110	3452	4486	389	14586	Male	2854	9428	18	1			2284
	Female	313	386	418	506	42	1665	Female	172	524					155
Total															



Narcotic Drug Laws	Total		18		9428		18		1		1		2284	
	Male	Female	3149	3110	3452	4486	389	14586	Male	Female	2854	476	1034	155
Opium (Morphine, Heroin, Codeine)	Male	Female	402	983	1601	345	291	6122	Male	Female	1119	3884	4	1115
	Female	Female	73	208	285	69	31	966	Female	Female	250	616		100
Marijuana	Male	Female	2430	2008	1703	398	82	7621	Male	Female	1422	5231	10	956
	Female	Female	188	155	123	104	10	580	Female	Female	173	367		40
Synthetic Narcotics - Manufactured Narcotics Which Can Cause True Drug Addiction (Demerol, Methadones)	Male	Female	26	49	58	92	7	232	Male	Female	46	147		39
	Female	Female	1	10	8	13		32	Female	Female	3	27		2
Other - Dangerous Non-Narcotic Drugs (Barbiturates, Benzadrine)	Male	Female	291	70	90	151	9	611	Male	Female	267	1166	4	174
	Female	Female	51	13	2	20	1	87	Female	Female	50	24		13
Gambling	Male	Female	518	593	719	2182	2166	6178	Male	Female	511	5161	3	502
	Female	Female	4	28	45	202	437	716	Female	Female	27	654	1	34
Bookmaking (Horse and Sport Book)	Male	Female	2	3	11	61	82	159	Male	Female	37	68	1	53
	Female	Female	1		1	12	16	30	Female	Female	3	18		9
Numbers and Lottery	Male	Female	12	23	33	145	224	437	Male	Female	51	357		29
	Female	Female		1	2	39	161	203	Female	Female	2	196		5
All Other Gambling	Male	Female	504	567	675	1976	1860	5582	Male	Female	423	4736	2	420
	Female	Female	3	27	42	151	260	483	Female	Female	22	440	1	20
Offenses Against Family and Children	Male	Female	34	109	197	579	106	1025	Male	Female	142	726		87
	Female	Female	11	33	50	112	13	219	Female	Female	66	127	2	24
Driving Under The Influence	Male	Female	26	187	364	1468	795	2840	Male	Female	1045	1410	12	373
	Female	Female	2	8	14	57	18	99	Female	Female	46	48	1	4
Liquor Laws	Male	Female	267	146	45	85	53	596	Male	Female	348	173	5	70
	Female	Female	48	24	1	6	6	85	Female	Female	64	16		5
Drunkenness	Male	Female	845	2072	2591	11466	8557	25531	Male	Female	9342	12912	558	2718
	Female	Female	91	208	228	4494	228	1249	Female	Female	430	735	25	59
Disorderly Conduct	Male	Female	13126	15385	14184	33593	16094	92382	Male	Female	25729	56341	842	9464
	Female	Female	1643	2505	3056	3566	946	11716	Female	Female	2611	8461	87	556
Vagrancy	Male	Female	172	1404	2487	15117	13832	33012	Male	Female	12353	16754	1202	2703
	Female	Female	8	104	154	459	243	968	Female	Female	342	570	21	35
All Other Offenses (Except Traffic)	Male	Female	4882	2388	2346	4204	1179	14999	Male	Female	3911	9496	34	1555
	Female	Female	761	2884	4139	2184	185	10153	Female	Female	1251	8656	20	225
Suspicion	Male	Female							Male	Female				
	Female	Female							Female	Female				
Curfew and Loitering Law Violations	Male	Female	900					900	Male	Female	193	642	2	63
	Female	Female	79					79	Female	Female	27	48		4
Run-Aways	Male	Female	2379					2379	Male	Female	904	1229	6	238
	Female	Female	4377					4377	Female	Female	1440	2450	46	439
TOTAL	Male	Female	58042	40004	40099	97059	48298	283502	Male	Female	76317	175048	2917	29191
	Female	Female	12049	10210	12870	12214	2823	50166	Female	Female	10165	37162	262	2571
GRAND TOTAL			70091	50214	52969	109273	51121	333668			86482	212210	3179	31762

# 12. Index Crime Arrests of Persons Under 25 by Percentages

Calendar Year (1 January Through 31 December)



# Traffic Enforcement and Accidents

## 13. Traffic Accident Causes - - -Arrests by Type of Violation \*

Calendar Year (1 January through 31 December)	Number of Causes	Number of Citations
<u>Causes of Violations</u>		
Following Too Closely . . . . .	18,109	21,285
Vehicle Right of Way . . . . .	17,268	6,535
Speeding . . . . .	8,108	175,787
Wrong Side of Road . . . . .	6,552	8,290
Obey Signs & Signals . . . . .	5,314	131,920
Improper Turning . . . . .	5,175	132,532
Improper Passing . . . . .	4,122	5,537
Driving Intoxicated . . . . .	3,538	6,796
Pedestrian Right of Way . . . . .	3,111	4,425
Thru Street Stop . . . . .	1,055	37,493
Outside Authorized Lanes . . . . .	—	35,933
Reckless Driving . . . . .	—	30,083
Obstructing Traffic . . . . .	—	18,744
Operator's Signals . . . . .	—	9,523
Improper Start From Parked Position . . . . .	—	3,375
Vision Obstruction . . . . .	—	1,332
Other Driving Violations . . . . .	59,506	68,141
GRAND TOTAL . . . . .	131,858	697,731

\*Hazardous

## 14. Traffic Accidents by Type of Accident

Calendar Year, (1 January Through 31 December)	NO. OF PERSONS					
	ALL ACCIDENTS	FATAL	NON-FATAL	PROPERTY DAMAGE	TOTAL KILLED	TOTAL INJURED
Struck Pedestrian	7,880	126	7,754	....	128	8,076
Struck Motor Vehicle in Traffic . . . . .	126,322	80	126,242	107,400	93	31,450
Struck Parked Motor Vehicle . . . . .	48,341	8	48,333	45,996	8	3,039
Struck Railroad Train . . . . .	70	4	66	41	7	36
Struck Bicyclist . . . . .	2,164	13	2,151	521	15	1,705
Struck Animal . . . . .	51	....	51	48	....	3
Struck Fixed Object . . . . .	7,777	50	7,727	5,493	51	3,120
Struck Other Object . . . . .	875	2	873	735	4	172
Other Non-Collision . . . . .	1,192	2	1,190	625	2	719
Other . . . . .	2,595	18	2,577	1,833	19	988
TOTAL . . . . .	197,267	303	197,064	162,692	327	49,308

## 15. Missing Persons

Calendar Year (1 January Through 31 December)\*

Juvenile Males (Under 17)	
Reported . . . . .	5,997
Located . . . . .	5,977
Juvenile Females (Under 17)	
Reported . . . . .	8,235
Located . . . . .	8,209
Adult Males	
Reported . . . . .	2,936
Located . . . . .	2,778
Adult Females	
Reported . . . . .	2,472
Located . . . . .	2,433

\* Case reports filed. Does not include runaways (see Table 11).

## 16. Disposition of Juveniles

Calendar Year (1 January Through 31 December)

Processed Within Department	
School Absentees . . . . .	49,618
Curfew Violators (Notice to Parents). . . . .	107,309
Community Adjustments	
(Minor Violations -	
Interview & Formal Release to Parents). . . . .	16,365
Referred to Youth Service Agency . . . . .	27,258
Referred to Other Police Agency . . . . .	107
Referred to Juvenile Court of Cook County . . . . .	16,163
Referred to Criminal Court . . . . .	60

## 17. Activities of Special Units

Calendar Year (1 January Through 31 December)

Marine Unit	
Tows. . . . .	146
Navigational	
Hazards Removed . . . . .	455
Arrests	
Rescues of Persons. . . . .	56
Canine Unit	
Arrests . . . . .	3,754
Building & Field	
Searches . . . . .	2,414
Mass Transit Unit	
Arrests . . . . .	48,170
Total Special Operations	
Arrests . . . . .	75,993
Guns Recovered . . . . .	1,606
Labor Relations	
Investigations . . . . .	13,887
Strikes. . . . .	215

## 18. Man-Hours for Special Events

Calendar Year (1 January Through 31 December)

Parades . . . . .	19,349
Expositions, Fairs, etc. . . . .	11,209
Sporting Events. . . . .	9,574
Security for Visiting Dignitaries . . . . .	21,715
Labor Controversies. . . . .	1,793
Demonstrations. . . . .	8,957
TOTAL . . . . .	71,671

# 19. Community Services

Calendar Year, (1 January Through 31 December)

## Neighborhood Relations

<b>Police Community</b>	
Workshops, Attendance (a) . . . . .	45,861
Other Police Community Meetings,	
Attendance . . . . .	168,341
Citizen Complaints Handled (b) . . . . .	7,781
Officer Friendly (c)	
Visits Made . . . . .	856
Students Visited . . . . .	23,645
Youth Activities, (d)	
Students Involved . . . . .	116,691
Mobile Exhibit Cruiser	
Engagements . . . . .	195
Attendance . . . . .	394,300
Human Relations Activities	
Investigations Made . . . . .	253
Meetings Attended. . . . .	332
<b>Public &amp; Internal Information Division</b>	
Publications, Copies Distributed	
Pamphlets and Booklets . . . . .	335,300
Headquarters Tours,	
Persons Conducted . . . . .	19,495
Speaking Engagements . . . . .	360

## Preventive Programs

Seminars and Workshops. . . . .	699
Attendance . . . . .	63,821
Physical/Facility Security Surveys	
Conducted, including follow-up visits . . . . .	998
Operations Identification Program	
Total Participation. . . . .	5,774
Speaking Engagements . . . . .	241
Attendance . . . . .	26,690

## Graphic Arts

Identification Sketches prepared	
from victims and witnesses . . . . .	272
Layouts, Maps, Charts, Posters,	
Blueprints, prepared. . . . .	6,285
Photo Negatives & Prints	
for Identification & public service. . . . .	72,975
35MM. Slides for audio visual . . . . .	6,460
16MM. Film for audio visual (feet) . . . . .	84,946

- (a) At least one meeting per month in each district (except Central), steering committee meetings not included.
- (b) Neighborhood problems investigated by district community service personnel.
- (c) School year ending June 1975. Series of visits to classrooms, kindergarten through 8th grade.
- (d) Participation by district personnel in The Mayor's Neighborhood Program on a year-round basis. Includes tours, field trips, sports events, etc., for ages 8 through 18 and employment referrals for high school youth and young adults.



*District Commander Aurelio Garcia and Neighborhood Relations Officer Marcello Ruiz, 13th District, meet with members of the Beat Representative Program.*

## 20. Communications

13 Period Year ( 9 January 1975 Through 7 January 1976)

Incoming Telephone Calls Answered (a) . . . . . 4,195,759

### Radio Calls Made

Dispatching (b) . . . . . 2,698,205  
Other (Administrative, etc.) . . . . . 2,354,563  
TOTAL . . . . . 5,052,768

### Messages Sent (c)

Facisimile . . . . . 1,115,936  
Teletype . . . . . 27,667

### Point-to-Point Radio Messages (d)

Stolen Auto Inquiries  
Received . . . . . 15,424  
Other Messages Sent or Received . . . . . 34,795

- (a). Includes all PO 5-1313 calls received by dispatchers whether from citizens or other agencies and whether resulting in vehicles dispatched, referrals made or instructions given. Also includes 744-4000 Centrex calls.
- (b). Radio dispatch cards made. Does not include extra (assist) cars sent through the initial dispatch, to districts and other Department units.
- (c). To districts and other Department units. Facsimile transmission used for operational messages; teletype for administrative messages.
- (d). Suburban, Statewide and Nationwide.

## 22. Field Inquiries

13 Period Year, (9 January 1975 through 7 January 1976)

### Wanted Persons Inquiries

Computer . . . . . 375,107  
Manual (a) . . . . . 42,176  
TOTAL . . . . . 417,283

### Stolen Auto Inquiries

Computer . . . . . 393,644  
Manual . . . . . 47,728  
TOTAL . . . . . 441,372

### Inquiries into

NCIC (b) . . . . . 290,752

### Inquiries Via

LEADS (c) . . . . . 185,879

### Warrants

Registered . . . . . 196,619  
Served . . . . . 108,854  
Extraditions and Turnovers . . . . . 1,758

- (a) Manual searches made when computer was inoperative due to maintenance, reorganization, etc.
- (b) Inquiries into computer at National Crime Information Center, Washington, D.C.
- (c) Messages via the 48-state network of the Law Enforcement Agencies Data System include vehicle registration inquiries to Springfield, Illinois.

## 21. Record Processing

13 Period Year ( 9 January 1975 Through 7 January 1976)

Radio Dispatch Cards Sorted . . . . .	2,667,057
Case Reports Processed (a) . . . . .	*548,318
Supplementary Reports Processed . . . . .	*414,247
Traffic Reports Processed . . . . .	*211,193
Copies Made and Distributed . . . . .	6,783,923
Computer Index Entries . . . . .	873,160
Cards Prepared (Typed) (b) . . . . .	41,701
Audit and Review . . . . .	1,704,132

\* Actual Count for 1975 Calendar Year

- a. Original Non-Traffic case & Vice Reports
- b. Lost or Stolen Property, License Plates, Vehicle registration.



## 23. Records Inquiries

13 Period Year (9 January 1975 Through 7 January 1976).

### NUMERICAL FILES

Case and Vice Reports Filed . . . . .	*548,318
Supplementary Reports Filed . . . . .	*414,247
Traffic Reports Filed . . . . .	*211,193
Copies Made and Distributed . . . . .	909,055
Requests Processed (Official and Citizen) . . .	318,315
Report Fees Collected . . . . .	\$667,888

### ALPHA FILES

Index Cards in File Year End . . . . .	4,239,060
Cards Filed . . . . .	937,002
Cards Purged . . . . .	279,322
Searches Made . . . . .	446,000

### PROPERTY FILES

Cards Prepared and Filed . . . . .	155,432
Reports Processed and Filed . . . . .	176,279

### RECORDS CENTER

Records Purged . . . . .	117 Tons
Record Searches Made . . . . .	205,464

\* Actual Count for 1975 Calendar Year

## 24. Identification

13 Period Year, (9 January Through 7 January 1976)

### Fingerprints Compared to Fingerprint Files

#### CRIMINAL (ARRESTEES)

Submitted . . . . .	126,229
Found Identical . . . . .	83,550

#### NON-CRIMINAL (Applicants, etc.)

Submitted . . . . .	54,289
Found Identical . . . . .	12,465

#### DEAD, INJURED, SHOT, ETC.

Submitted . . . . .	2,213
Found Identical . . . . .	1,464

#### LATENT FINGERPRINTS (a)

Evaluated	
Submitted . . . . .	14,924
Found Suitable for Comparison . . . . .	10,667

#### Fingerprints Compared to Latent

Submitted . . . . .	15,451
Found Identical . . . . .	2,070

### RECORDS

Arrest Reports Processed . . . . .	326,052
Wanted Persons Notices	
Filed . . . . .	6,766
Cancelled . . . . .	7,029
Record Checks Made	
Inquiries at Counter and by Mail . . . . .	218,220
Photo Services	
Photos Received & Filed . . . . .	59,672

(a) "Dusted" and other prints obtained at crime scene.  
Comparisons made to determine presence of person, persons  
criminal or other at scene.

## 25. Evidence and Recovered Property

13 Period Year, (9 January 1975 Through 7 January 1976)

Property Recovered and Disposed of	
Inventories (a)	
Received	81,976
Disposed Of:	
Returned to Owners	7,544
Turned over to Finder	29
Turned over to Other	
Government Agencies	4,117
Sold at Auctions	3,769
Destroyed, (Narcotics)	15,631
Destroyed (Other Property)	29,541
Firearms Destroyed at Steel Works	
Inventories (a)	21,324
Pieces (Units)	19,766
Monies Disbursed	
Owners (Cash)	1,030,688
Police Pension Fund (b)	
Unclaimed Monies	97,632
Net Proceeds from Auction	103,522
Scrap Metal	771
County Treasurer	
(Gambling Seizures)	34,233
Misc. IRS, Courts, etc.	187,133
<b>TOTAL</b>	<b>1,453,959</b>

(a) A property inventory includes up to 12 items recorded on CPD Form 23-598 taken into custody in connection with a crime. A crime may yield one or more inventories; and an item of inventory one or more units of property.

(b) City of Chicago Policemen's Annuity and Benefit Fund.

## 26. Crime Laboratory

13 Period Year, (9 January 1975 Through 7 January 1976)

Chemistry (Cases Processed)	17,113
Documents (Cases Processed)	1,301
Firearms (Guns Processed)	20,348
Toolmarks Cases Processed)	2,542
Microanalysis (Cases Processed)	5,438
Polygraph	718
Crime Scene Processing	
Death Investigations	1,357
Burglary, Residential	18,826
Burglary, Non-Residential	8,025
Recovered Vehicles	2,680
Theft	1,408
Robbery	3,177
Sex Offense	2,331
Arson	739
Criminal Trespass to Property	801
Miscellaneous	3,152

## 27. Automotive Pounds

13 Period Year ( 9 January 1975 Through 7 January 1976)

### Number of Vehicles

On Hand, Year-End(a)	
Immediate(b)	2,578
Abandoned	1,442
<b>TOTAL</b>	<b>4,020</b>

### Towed

Immediate(b)	43,122
Abandoned	23,978
<b>TOTAL</b>	<b>67,100</b>

### Released to Owners

Immediate(b)	30,043
Abandoned	2,899
<b>TOTAL</b>	<b>32,942</b>

### Confiscated & Released

To Sheriff	296
Sold at Auction	1,542
Sold for Scrap	31,304

### Monies Received

Auction(c)	326,085.00
Scrap(d)	351,702.19
Towing	603,560.00
Storage	424,755.30
<b>TOTAL</b>	<b>\$1,706,102.49</b>

(a) Total Capacity: 5,450 in six facilities in 1975

(b) Towed immediately because stolen, property of prisoner, involved in accident, traffic hazard (including abandoned noted as hazard), etc.

(c) Gross income (auctioneer's commission and expenses not deducted).

(d) Vehicles sold by City Purchasing Agent under contract.

## 28. Animal Care

Calendar Year (1 January Through 31 December)

Stray Dog Complaints Received	25,871
Stray Animals Caught	17,567
Animal Bite Reports Processed	19,698
Biter Animals Impounded for	
Rabies Observation(a)	4,421
Rabid Animal Cases	None
Court Citations Issued	434
<b>Total Number of Animals Handled</b>	<b>27,631</b>

(a) Does not include animals impounded by private Veterinarians.

## 29. Department Vehicle

Calendar Year (1 January Through 31 December)

	AVG. MILEAGE WHEN TRADED	NUMBER ON HAND YEAR - END
Uniform, 8 - Cylinder . . . . .	75,000. . .	1,064
Unmarked, 8 - Cylinder . . . . .	75,000. . .	854
Squadrols. . . . .	75,000. . .	72
Prisoner Vans (Large) (a) . . . . .		12
Trucks and Station Wagons . . . . .	50,000. . .	76 (b)
Motorcycles, 3 - Wheel . . . . .	50,000. . .	186
Motorcycles, 2 - Wheel . . . . .	50,000. . .	10
Expropriated (c) . . . . .		16
TOTAL ASSIGNED. . . . .		2,285
Pool (Temporary Replacements) (d) . . . . .		762
TOTAL ALL VEHICLES . . . . .		3,047
TOTAL MILEAGE . . . . .		59,971,336

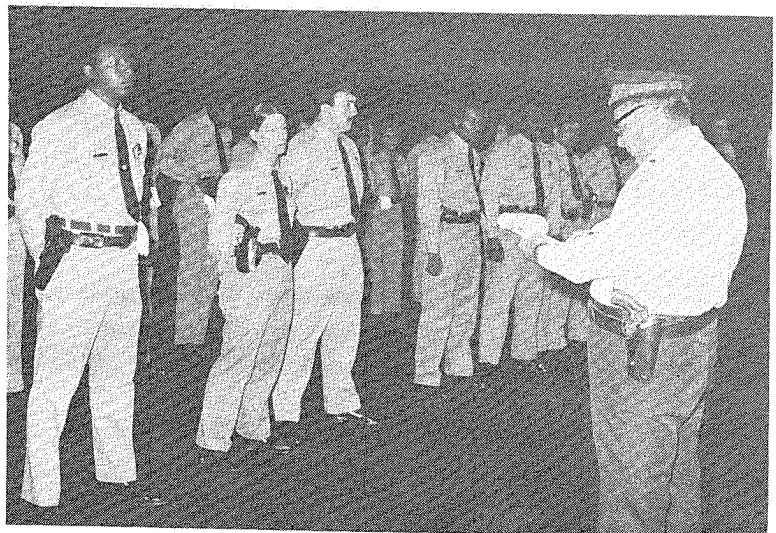
- (a) Air conditioned; suitable for transport of Sworn Personnel to and from special assignments.
- (b) Includes two trucks adapted for emergency use as prisoner vans.
- (c) Unclaimed, abandoned or unclaimed stolen vehicles retained for police use.
- (d) Includes: vehicles for administrative use; temporary replacements for vehicles being serviced; vehicles out of service for repair; disabled for trade-in and truck - cabs and chasis without bodies.

## 30. Training

Calendar Year (1 January Through 31 December)

	NUMBER OF STUDENTS	MAN - DAYS
Recruits. . . . .		
Chicago . . . . .	200 . . . . .	*36,165
Suburban. . . . .	210 . . . . .	6,580
Special Students . . . . .	100 . . . . .	580
Pre - Service . . . . .	460 . . . . .	5,734
In - Service. . . . .	2,486 . . . . .	5,111
Specialized. . . . .	247 . . . . .	8,826
Civilian . . . . .	753 . . . . .	3,296
TOTAL . . . . .	4,456 . . . . .	66,292

\* This figure does not reflect the amount of training necessary to complete recruit training for the Chicago Police Recruits who were appointed during 1975. The balance of this training will be completed in 1976.



*Police Recruits line up for roll-call and inspection prior to working on a detail.*

## 31. Budget Appropriations

Calendar Year (1 January Through 31 December)

Personal Services (Salaries, Wages, etc.) . . . . .	\$266,968,155
Contractual Services (a) . . . . .	6,186,850
Travel . . . . .	25,000
Commodities (b) . . . . .	7,171,700
Equipment (Automotive, Communications, etc.) . . . . .	2,275,500
Improvements (Buildings) . . . . .	268,000
Specific Purposes (c) . . . . .	25,000
Contingencies. . . . .	100,000
<b>TOTAL . . . . .</b>	<b>\$283,020,205</b>

- (a) Rentals and repairs of equipment; professional and technical services; utilities; etc.
- (b) Gasoline, repair parts, material, supplies, etc.
- (c) Special, one - time allocations; also pension fund.

## 32. Salary Schedule

Calendar Year (1 January Through 31 December) \*

Superintendent . . . . .	\$40,000.00
First Deputy Superintendent . . . . .	36,000.00
Deputy Superintendent . . . . .	34,000.00
Chief. . . . .	32,000.00
Asst. Deputy Superintendent, Deputy Chief . . . . .	29,500.00
Commander, Director, Administrative Asst.	
Executive Asst., Aide . . . . .	27,500.00
Captain (a) . . . . .	26,040.00
Lieutenant (a) . . . . .	23,676.00
Sergeant (a) . . . . .	20,592.00
Investigator, Dispatcher, Youth Officer, etc. (a) . . . . .	18,888.00
Police Officer (a -b) . . . . .	18,000.00
Crossing Guard (c) . . . . .	5.06

\* Maximum annual rates unless otherwise noted.

(a) Four longevity increases of approximately 2% not shown.

(b) Progressive rates for Police Officer rank:

First six months . . . . .	\$12,024.00
After six months . . . . .	12,816.00
After 12 months . . . . .	13,608.00
After 24 months . . . . .	14,400.00
After 36 months . . . . .	15,132.00
After 48 months (maximum rate, above) . . . . .	15,888.00

(c) Maximum hourly rates after twenty years.

Starting rate, \$3.42 per hour.

### 33. Internal Affairs

Calendar Year, 1 January Through 31 December

ALLEGATIONS	CR ISSUED	SUSTAINED
Indebtedness . . . . .	21	* 43
Intoxication . . . . .	63	24
Violation of Civil Rights . . .	251	2
Improper Arrests and Lock- Up Procedures . . . . .	119	27
Excessive Force . . . . .	2	* 15
Bribery . . . . .	399	8
Traffic (Non-Bribery) . . . . .	137	14
Commission Of A Crime . . . .	127	29
Conduct Unbecoming . . . . .	1218	160
Miscellaneous (Mostly Administrative Offenses) . .	2081	879
<b>TOTALS . . . . .</b>	<b>4418</b>	<b>1201</b>

\* Hold - Over Investigation from Previous Year.

#### Disciplinary Actions in Sustained Cases

Oral Reprimand . . . . .	118
Written Reprimand . . . . .	296
Suspended 1 to 5 days . . . . .	717
Suspended 6 to 15 days . . . . .	63
Suspended 16 to 30 days . . . . .	66
Suspended over 30 days . . . . .	23
Discharged . . . . .	93
Resigned While Under Investigation . . . . .	91
<b>TOTAL . . . . .</b>	<b>*1467</b>

\* Includes disciplinary actions on cases from prior years.

### 34. Office of Professional Standards

13 Period Year (9 January 1975 Through 7 January 1976)

Complaints Registered . . . . .	6,285
Complaints Forwarded to IAD for Investigation . . . . .	4,425
Retained by OPS for Investigation . . . . .	1,864
<b>DISPOSITION OF CASES</b>	
Cases Completed . . . . .	1,304
Unfounded . . . . .	536
Exonerated . . . . .	194
Not Sustained . . . . .	467
Sustained . . . . .	107

## 35. Population and Land Areas

POPULATION				
DISTRICT	NUMBER	RANK	SO. MILES	RANK
1 CENTRAL	9,775	23	3.250	23
2 WENTWORTH	145,799	12	4.250	22
3 GRAND CROSSING	139,697	14	6.375	14
21 PRAIRIE	100,020	20	5.625	15
AREA 1 TOTAL	395,291	6	19.500	6
4 SOUTH CHICAGO	177,796	5	27.500	2
5 KENSINGTON	159,383	10	15.000	4
6 GRESHAM	98,108	21	6.625	12
22 MORGAN PARK	117,529	18	13.625	5
AREA 2 TOTAL	552,816	4	62.750	1
7 ENGLEWOOD	159,411	9	6.375	13
8 CHICAGO LAWN	229,717	2	22.625	3
9 DEERING	166,411	8	12.625	6
AREA 3 TOTAL	555,539	3	41.625	3
10 MARQUETTE	155,030	11	7.750	11
11 HARRISON	129,901	16	4.875	19
12 MONROE	85,873	22	5.000	18
13 WOOD	140,135	13	5.250	16
AREA 4 TOTAL	510,939	5	22.875	5
14 SHAKESPEARE	168,845	7	8.000	10
15 AUSTIN	195,777	4	11.500	7
16 JEFFERSON PARK	215,901	3	30.000	1
17 ALBANY PARK	169,709	6	11.125	8
AREA 5 TOTAL	750,232	1	60.625	2
18 EAST CHICAGO	108,738	19	4.500	21
19 BELMONT	134,205	15	5.000	17
20 FOSTER AVENUE	238,313	1	8.875	9
23 TOWN HALL	120,884	17	4.500	20
AREA 6 TOTAL	602,140	2	22.875	4
CITY TOTALS	3,366,957		230.250	

FINAL REVISED PRELIMINARY COUNTS BY CENSUS TRACT: 1970

REVISED 16 JUNE 1976.



**CHICAGO O'HARE  
INTERNATIONAL  
AIRPORT**

**FOR EMERGENCY SERVICE,  
PHONE PO 5 1313**

**DEPARTMENT HEADQUARTERS**

**1121 S. State St. (60605)**

**Non - emergency phone calls:**

**Weekdays - see detailed listing in**

**Telephone Directory**

**Nights & Weekends, 744-6301**

**Traffic Division Headquarters**

**54 W. Hubbard St. (60611), 744-4804**

**Districts**

**First Area:**

**1st - (Central) 11 E. 11th St.**

**2nd - (Wentworth) 5101 S. Wentworth Ave.**

**3rd - (Grand Crossing) 834 E. 75th St.**

**21st - (Prairie) 300 E. 29th St.**

**Second Area**

**4th - (South Chicago) 2938 E. 89th St.**

**5th - (Kensington) 200 E. 115th St.**

**6th - (Gresham) 819 W. 85th St.**

**22nd - (Morgan Park) 1830 Monterey**

**Third Area:**

**7th - (Englewood) 6120 S. Racine Ave.**

**8th - (Chicago Lawn) 3515 W. 63rd St.**

**9th - (Deering) 3501 S. Lowe Ave.**

**Fourth Area:**

**10th - (Marquette) 2259 S. Damen Ave.**

**11th - (Harrison) 3151 W. Harrison**

**12th - (Monroe) 100 S. Racine Ave.**

**13th - (Wood) 937 N. Wood St.**

**Fifth Area:**

**14th - (Shakespeare) 2138 N. California Ave.**

**15th - (Austin) 5327 W. Chicago Ave.**

**16th - (Jefferson Park) 5430 W. Gale Ave.**

**17th - (Albany Park) 4461 N. Pulaski Rd.**

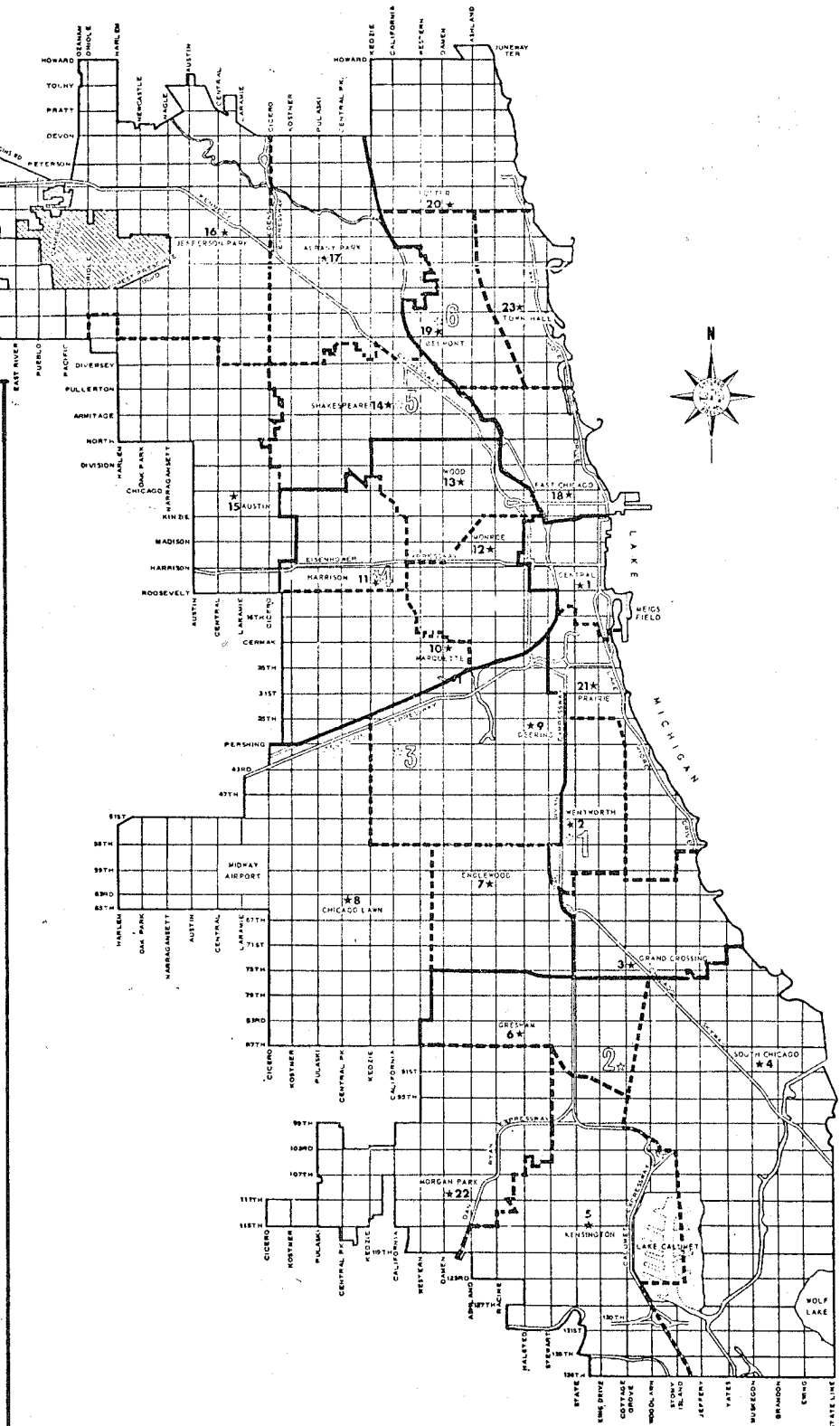
**Sixth Area:**

**18th - (East Chicago) 113 W. Chicago Ave.**

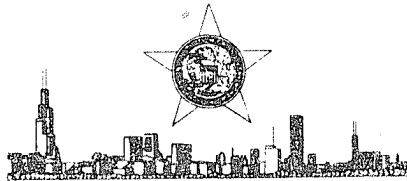
**19th - (Belmont) 2452 W. Belmont Ave.**

**20th - (Foster Ave.) 1940 W. Foster Ave.**

**23rd - (Town Hall) 3600 N. Halsted St.**



## CHICAGO POLICE



*We serve and protect*



Richard J. Daley  
Mayor



James M. Rochford  
Superintendent

Prepared by the  
Public and Internal Information Division  
Chicago Police Department  
For Departmental use.