

# CHICAGO POLICE ANNUAL REPORT, 1971



RICHARD J. DALEY, MAYOR • JAMES B. CONLISK, JR., SUPERINTENDENT

# Table of Contents

Message from the Superintendent . . . . .	page 3
Highlights of 1971 . . . . .	5
Types of Data Presented . . . . .	9

## CRIMES REPORTED

1 Index Crimes by Months . . . . .	9
2 Index Crimes by Periods. . . . .	9
3 Index Crimes by Periods, graph . . . . .	10
4 Index Crimes by Periods by Periods—Offenses	10
5 Index Crimes by Type by Months — Offenses and Clearances . . . . .	11
6 Murder Offenses by Type . . . . .	12
7 Robbery, Burglary and Theft Offenses by Type	13
8 Aggravated Assault Offenses by Type . . . . .	14
9 Auto Theft Offenses by Type . . . . .	14

## ARRESTS AND OTHER ACTIONS

10 All Arrests and Citations, summary with graphs	15
---	----

### Non - Traffic Actions

11 Non-Traffic Arrests by Age and Sex . . . . .	16
12 Index Crime Arrests of Persons Under 25 by Percentages, graph . . . . .	21
13 Disposition of Juveniles . . . . .	22
14 Missing Persons . . . . .	22
15 Community Service Activities . . . . .	23
16 Man-Hours for Special Events . . . . .	24
17 Activities of Special Units . . . . .	24

### Traffic Enforcement and Accidents

18 Traffic Accident Causes and Arrests by Type of Violation . . . . .	25
19 Traffic Accidents by Type of Accident . . . . .	26

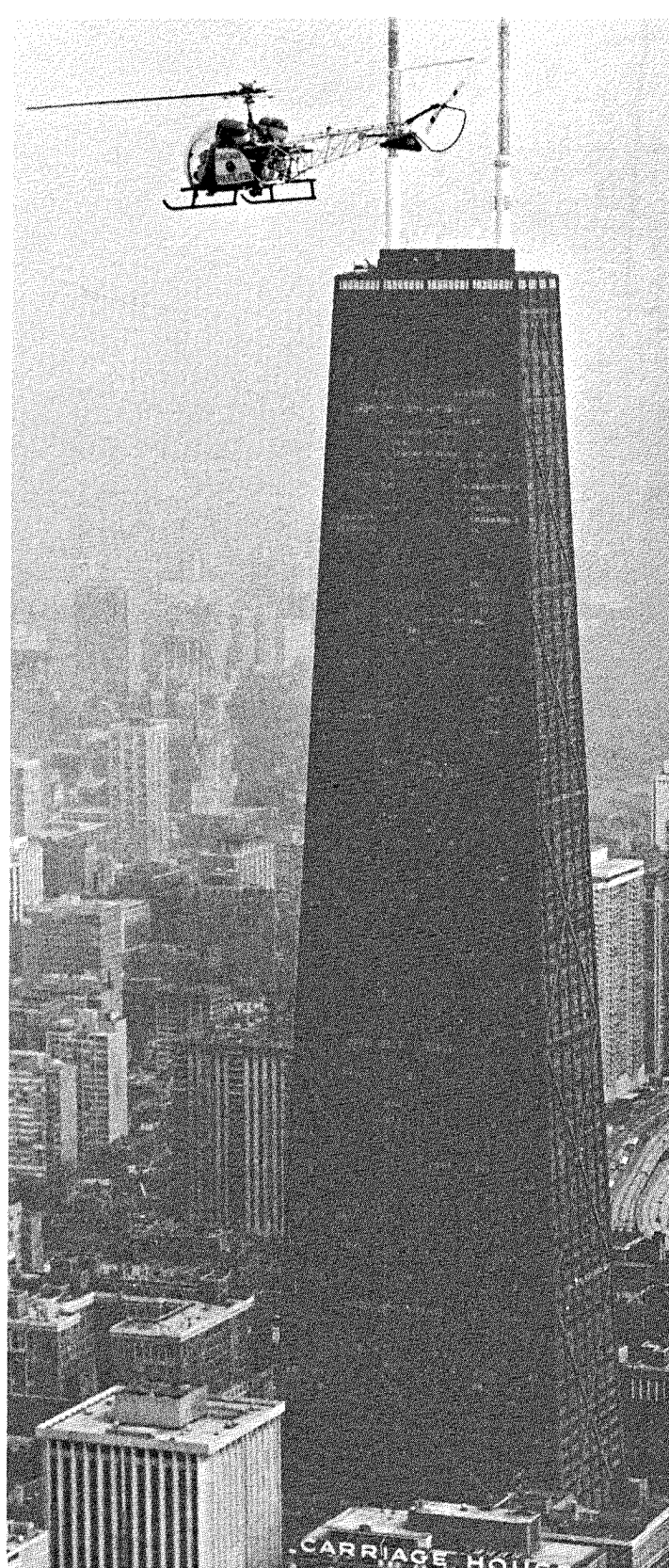
## STAFF UNIT SERVICES

20 Communications Center . . . . .	27
21 Records Inquiries . . . . .	27
22 Field Inquiries . . . . .	28
23 Evidence and Recovered Property . . . . .	28
24 Identification . . . . .	29
25 Automotive Pounds . . . . .	29
26 Vehicles . . . . .	30
27 Animal Care . . . . .	30
28 Training . . . . .	31

## DEPARTMENT RESOURCES

29 Budget Appropriations . . . . .	32
30 Salary Schedules . . . . .	33
31 Population and Land Areas . . . . .	34
32 Department Locations . . . . .	34

Organization of the Department, chart . . .18—19



The Department's helicopter can go anywhere, and as high as "Big John."

*Copies of this Annual Report are available on request from Public and Internal Information Division, Chicago Police Department, 1121 S. State St., Chicago, Illinois 60605 (phone: 744-5570).*



Mayor Richard J. Daley

Honorable Richard J. Daley  
Mayor of Chicago  
City Hall  
Chicago, Illinois 60602

June 1, 1972

Dear Mr. Mayor:

Submitted herewith is the annual report of the Chicago Police Department for the year 1971. This booklet is designed for reference use by governmental agencies at city, state and national levels and by others who may request information from the Department.

We are indebted to you, the City Council and other department heads for continued support of our efforts to give Chicago the finest police department in the nation.

Sincerely,

A handwritten signature in dark ink, appearing to read "James B. Conlisk, Jr.", written in a cursive style.

Superintendent of Police



Superintendent  
James B. Conlisk, Jr.

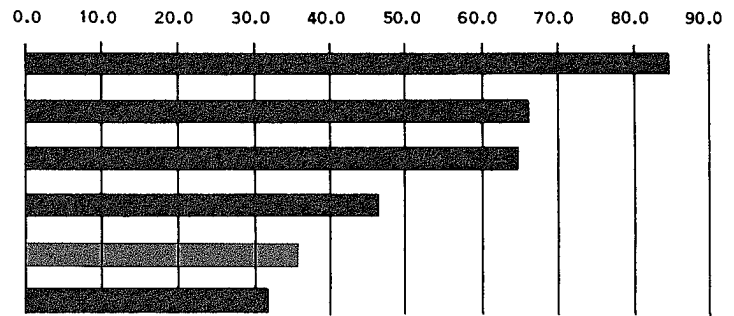




# 1971 Index Crimes Rates per 1,000 Population

Cities  
One Million  
and Over

1. Detroit . . . . 84.2
2. New York . . . 67.3
3. Los Angeles . 65.3
4. Houston . . . . 47.7
5. Chicago . . . . 37.6
6. Philadelphia . 31.4



Cities  
250,000  
and Over

CRIME RATE RANK	INDEX CRIMES PER 1,000 POPULATION	INDEX CRIMES 1971 TOTAL <sup>a</sup>	POPULATION <sup>b</sup>	POPULATION RANK
1. Newark, N.J. . . . .	91.0	34,762	382,417	36
2. Detroit, Mich. . . . .	84.2	127,245	1,511,482	5
3. San Francisco, Calif. . . . .	80.4	57,538	715,674	13
4. Miami, Fla. . . . .	74.3	24,897	334,859	42
5. Denver, Colo. . . . .	73.2	37,706	514,678	25
6. St. Louis, Mo. . . . .	71.4	44,409	622,236	18
7. Oakland, Calif. . . . .	70.9	25,664	361,561	38
8. Portland, Ore. . . . .	69.1	26,459	382,619	35
9. Washington, D.C. . . . .	67.7	51,256	756,510	9
10. New York, N.Y. . . . .	67.3	529,447	7,867,760	1
11. Boston, Mass. . . . .	66.3	42,514	641,071	16
12. Los Angeles, Calif. . . . .	65.3	183,867	2,814,152	3
13. Cleveland, Ohio . . . . .	61.6	46,295	750,903	10
14. Atlanta, Ga. . . . .	60.5	30,056	496,973	27
15. Baltimore, Md. . . . .	60.1	54,449	905,759	7
16. New Orleans, La. . . . .	59.7	35,375	593,471	19
17. Dallas, Texas . . . . .	55.0	46,400	844,401	8
18. Minneapolis, Minn. . . . .	55.0	23,865	434,400	32
19. Kansas City, Mo. . . . .	54.9	27,864	507,409	26
20. Sacramento, Calif. . . . .	52.8	13,410	254,413	55
21. Phoenix, Ariz. . . . .	52.5	30,546	581,562	20
22. Pittsburgh, Pa. . . . .	50.9	26,467	520,117	24
23. Seattle, Wash. . . . .	50.8	26,967	530,831	22
24. Honolulu, Hawaii . . . . .	50.3	16,352	324,871	44
25. Tampa, Fla. . . . .	49.7	13,824	277,767	50
26. Columbus, Ohio . . . . .	49.2	26,578	539,677	21
27. Louisville, Ky. . . . .	48.7	17,567	361,472	39
28. Cincinnati, Ohio . . . . .	48.3	21,880	452,524	29
29. Houston, Texas . . . . .	47.7	58,819	1,232,802	6
30. Long Beach, Calif. . . . .	47.6	17,084	358,633	40
31. Birmingham, Ala. . . . .	47.0	14,152	300,910	48
32. St. Paul, Minn. . . . .	46.5	14,418	309,980	46
33. Nashville, Tenn. . . . .	46.3	20,746	447,877	30
34. Akron, Ohio . . . . .	46.0	12,669	275,425	52
35. Jacksonville, Fla. . . . .	45.7	24,171	528,865	23
36. Norfolk, Va. . . . .	45.2	13,939	307,951	47
37. Buffalo, N.Y. . . . .	43.7	20,226	462,768	28
38. Jersey City, N.J. . . . .	43.0	11,214	260,545	54
39. San Antonio, Texas . . . . .	40.8	26,703	654,153	15
40. El Paso, Texas . . . . .	40.6	13,074	322,261	45
41. San Jose, Calif. . . . .	40.1	17,880	445,779	31
42. Wichita, Kansas . . . . .	38.6	10,689	276,554	51
43. Memphis, Tenn. . . . .	37.8	23,610	623,530	17
44. Rochester, N.Y. . . . .	37.7	11,160	296,233	49
45. Chicago, Ill. . . . .	37.6	126,854	3,366,957	2
46. Tulsa, Okla. . . . .	37.4	12,432	331,638	43
47. San Diego, Calif. . . . .	36.6	25,495	696,769	14
48. Toledo, Ohio . . . . .	36.0	13,821	383,818	34
49. Fort Worth, Texas . . . . .	35.4	13,948	393,476	33
50. Oklahoma City, Okla. . . . .	35.4	12,959	366,481	37
51. Austin, Texas . . . . .	33.0	8,313	251,808	56
52. Omaha, Nebr. . . . .	32.9	11,407	347,328	41
53. Tucson, Ariz. . . . .	32.2	8,465	262,933	53
54. Philadelphia, Pa. . . . .	31.4	61,340	1,948,609	4
55. Indianapolis, Ind. . . . .	30.7	22,874	744,624	11
56. Milwaukee, Wisc. . . . .	30.7	22,024	717,298	12

<sup>a</sup> 1971 FBI Preliminary Annual Press Release, 30 March 1972.

<sup>b</sup> U.S. Bureau of Census — Final Census Report issued by the Bureau of Census, Department of Commerce, Chicago, Illinois.



# Highlights of 1971

Index crimes\* reported in Chicago during the 1971 13-period police year declined 0.6% from the previous year. It was the second consecutive year that there was a crime decrease. In the police year 1970 the number of crimes was 1.9% lower than in 1969. Accordingly, there was a two-year decrease of 2.6% from 1969 to 1971.

According to the FBI, Chicago's 1971 per capita rate for index crimes was again the second lowest among the nation's six largest cities. Among the 56 American cities of 250,000 or more Chicago's ranking declined from 43rd place in 1970 to 45th in 1971 (adjoining charts).

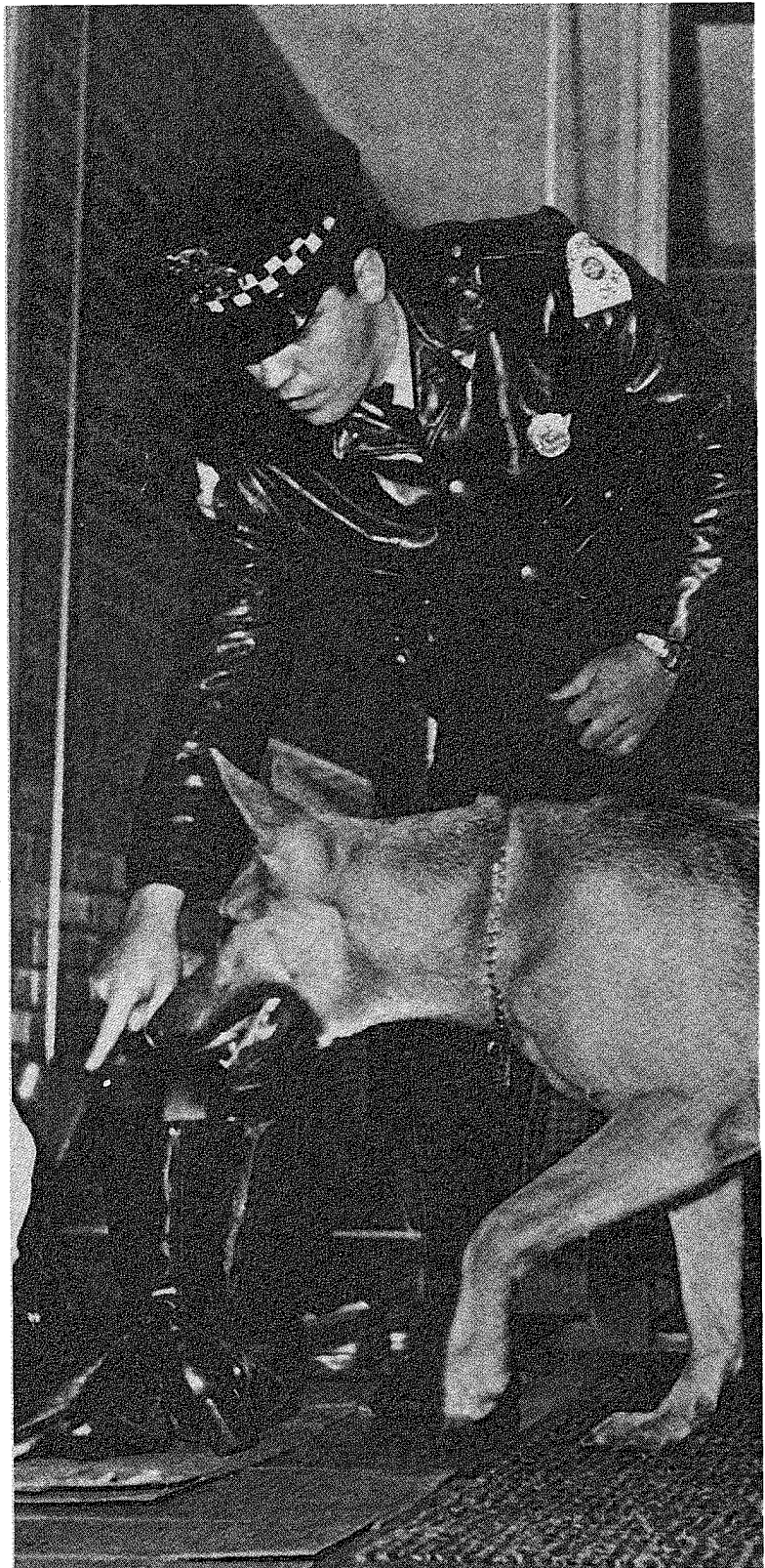
## First in Traffic Safety

Chicago's 1971 fatality rate per 10,000 registered vehicles was 2.6, a decrease from 3.0 in 1970. Because of the low rate in 1971 Chicago ranked first in safety among cities over one million.

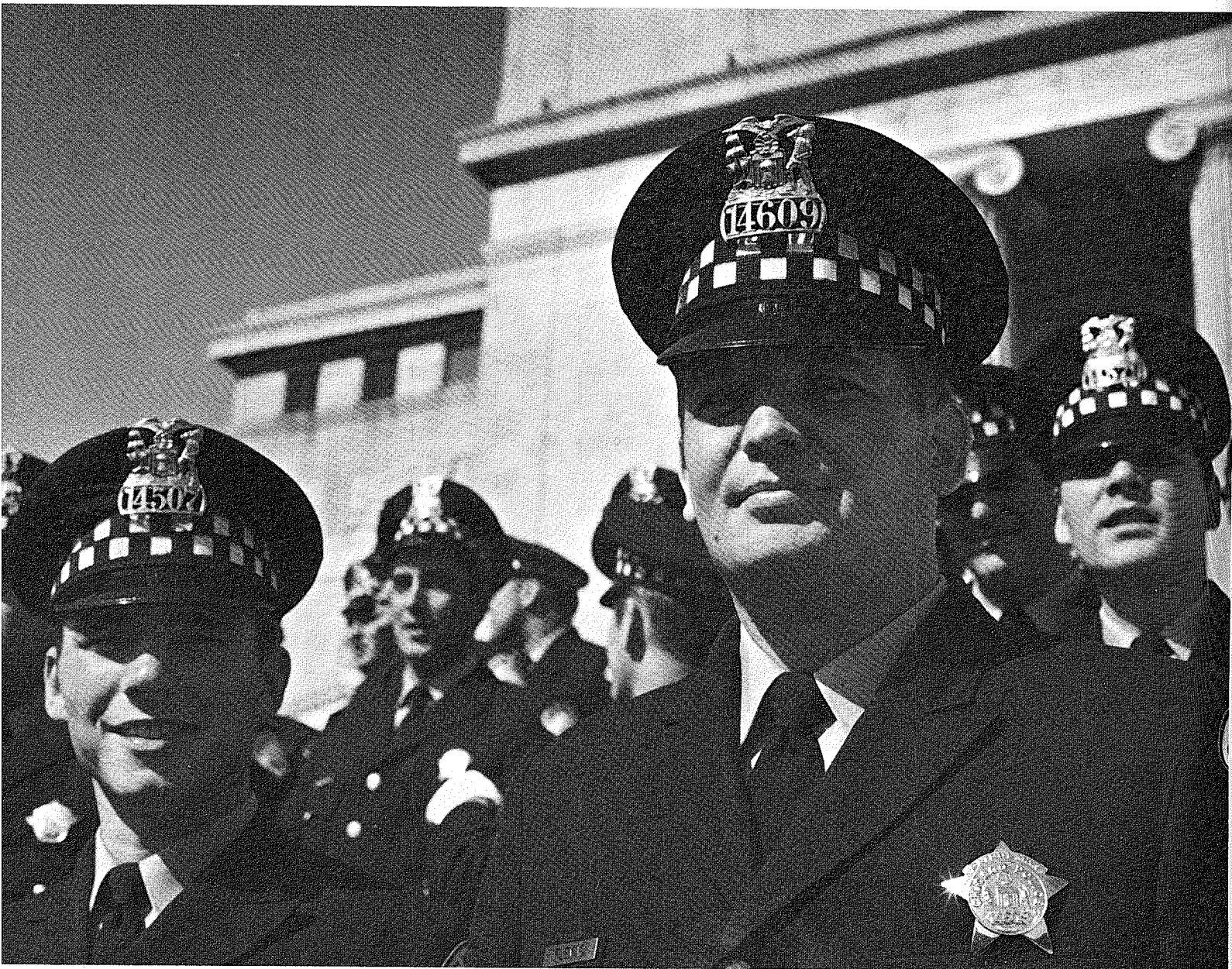
Reorganization of the Department, announced late 1970, was virtually completed in 1971. Creation of two additional bureaus and the resultant reallocation of units made possible a significant reduction in the span of control and more effective coordination of related functions. The present Department organization is charted in detail on pages 18 and 19.

During 1971 Chicago did not experience major disturbances which, every year since 1965, had placed heavy demands on Department manpower. Less manpower was also required for sporting events, escort of visiting dignitaries and labor controversies. More manpower could therefore be released for aggressive, preventive patrol.

The Department's Mass Transit Unit continued to increase the number of arrests made on Chicago Transit Authority trains, stations and platforms. In July 1971 the unit instituted decoy tactics to further discourage crimes against CTA passengers.



Officer of Canine Unit directs his dog to pick up a scent.



Patrolmen assemble for picture-taking after graduation ceremonies held in the Simpson Theatre at the Field Museum.

### Vertical Patrol

The Cabrini-Green Vertical Patrol completed its first full year of operations in the Chicago Housing Authority complex. Its integrated two-man patrol teams are the first of their kind in Chicago. Teams are on duty during all three watches. They carry portable radios that link them to 18th District beat cars.

Proceeding from building to building, the men walk up and down stairways and along balconies, regularly checking utility and laundry rooms, elevators and play areas. The unit, originally set up at the request of residents and funded under federal grant, has won the close cooperation of both young and old.

## **Seaport of Chicago**

Despite significant increases in the quantity of cargo handled, number of ship arrivals and volume of truck traffic in Lake Calumet and the Calumet River and at Navy Pier, security was more effective than in any preceding year.

Under its identification program the Department's Seaport Section has registered a total of 3,500 persons. The loss of trailers used for transport of 20 and 40-foot containers was brought under control by a pass-out procedure instituted during 1971.

## **Personal Radios**

Citywide distribution of personal radios to beat officers neared completion at year's end. Initiated as a pilot program February 1969, personal radios have freed the officer from his vehicle, giving him complete mobility for more intensified and concentrated patrol. As an extension of the neighborhood patrol concept their use proved invaluable in opening further lines of communication with citizens.

## **Court Appearances**

Despite the fact that more cases were assigned to the courts and many more officers appeared in court, court sergeants relieved a greatly increased number of officers. Under revised Department procedures the second officer in a two-man car was excused from court appearance if he did not have testimony additional to that of his partner.

## **Community Services**

Among the patrol activities of community service aides featured in 1971 were the investigation of adult missing persons cases, increased effort at elementary schools to prevent harassment of little children by older youngsters, an animal control program, and intensified emphasis on the detection of stolen autos.

In cooperation with the Criminal Investigation Division, the newly established Preventive Programs Division conducted seminars for business groups on subjects such as delivery truck robbery and warehouse security.

To insure prompt response to tension situations, the Human Relations Section established a shift for the third watch. Because high schools have been the scenes of disruption based on racial an-

imosities the Human Relations Section, in conjunction with the University of Chicago Center for Continuing Education, conducted "rap" sessions with representative groups of students from the affected schools.

During the summer months, 200 boys and girls were employed in neighborhood relations sections at the outlying 20 districts and certain administrative units at Department headquarters.

## **Staff Services**

Since the opening of the garage at 5219 South Wentworth Avenue all heavy-duty vehicles such as prisoner vans and buses have been serviced by Department personnel, thereby reducing both costs and downtime. Newly purchased exhaust testing equipment makes possible more accurate tuning and effective reduction of air pollution. Installation of aluminum superstructures on Department boats will greatly reduce maintenance costs.

The Evidence Technician Section was transferred from the Patrol Division to the Criminalistics Division to effect closer coordination with the work of Mobile Unit personnel.

## **Training**

In the highest suburban enrollment to date a class of 41 recruits from nine suburban departments, the Chicago Transit Authority and the Cook County Forest Preserve Rangers were graduated in April by the Training Division from a 10-week training course.

One hundred twenty command personnel were enrolled in a college-level management education program being conducted by DePaul University. Classes, taught by members of the DePaul faculty, are held at Department headquarters.

Prior to the December 4 Civil Service examination for the position of patrolman Department recruitment efforts virtually blanketed the city through numerous civic and other organizations as well as available media. Training and orientation classes for potential applicants were conducted at district stations in both English and Spanish.

---

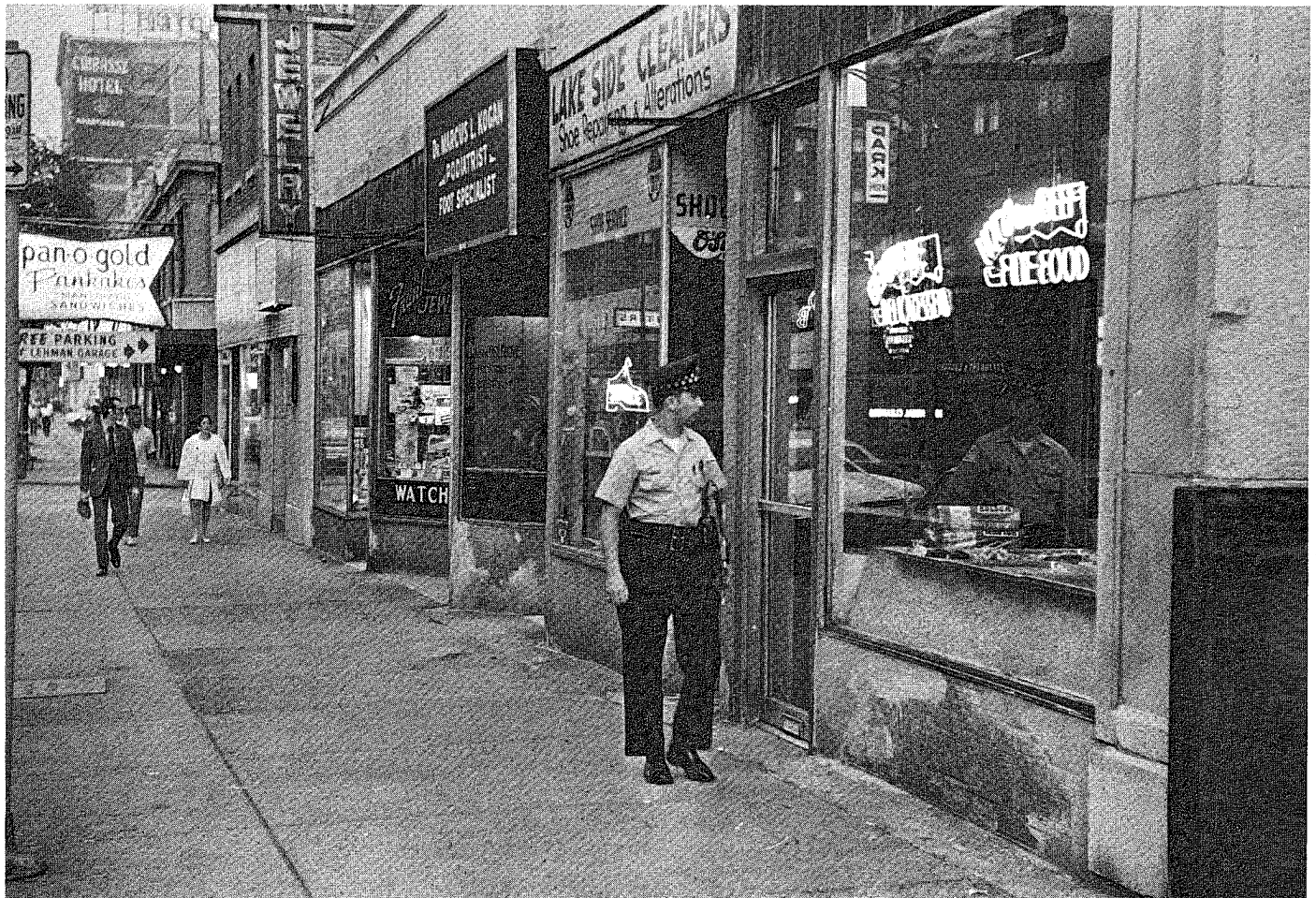
\* The seven major crimes designated by the FBI as "index" crimes for use in making comparisons among various law enforcement jurisdictions are: Murder (including non-negligent homicide); Forcible Rape; Aggravated Assault; Robbery; Burglary; Theft, \$50 & Over; and Auto Theft.



# STATISTICAL HIGHLIGHTS

Index Crimes Reported . . . . .	126,854	Traffic Citations, All. . . . .	3,435,377
Murder Reported . . . . .	824	Traffic Citations, Hazardous . . . . .	843,005
Rape Reported . . . . .	1,549	Communications Center, Calls Received <sup>a</sup> . . . . .	3,890,921
Aggravated Assault Reported . . . . .	11,285	Stolen Cars, Records Searched <sup>a</sup> . . . . .	701,619
Robbery Reported . . . . .	24,012	Wanted Persons, Records Searched <sup>a</sup> . . . . .	467,942
Burglary Reported . . . . .	38,385	Arrestee Fingerprints, Compared <sup>a</sup> . . . . .	123,904
Theft \$50 & Over Reported . . . . .	15,593	Arrestee Fingerprints, Identical <sup>a</sup> . . . . .	76,305
Auto Theft Reported . . . . .	35,206	Latent Fingerprints Compared <sup>a</sup> . . . . .	20,573
		Latent Fingerprints Identical <sup>a</sup> . . . . .	1,511
Murder by Handgun Reported . . . . .	399	Abandoned Vehicles Towed <sup>a</sup> . . . . .	47,214
Index Crime Arrests, All Ages . . . . .	52,451	Budget Appropriations . . . . .	\$210,072,120.00
Index Crime Arrests, Under 18 . . . . .	22,352	Patrolman Salary, Max. Annual. . . . .	12,972.00
Non-Traffic Arrests, All Ages . . . . .	280,222	Sworn Personnel . . . . .	13,181
Non-Traffic Arrests, Under 18 . . . . .	67,005	All Personnel . . . . .	16,553

<sup>a</sup> 13-period years. <sup>b</sup> Not included: 2% longevity increases instituted 1970 and 1971.



Basic to all police work is foot patrol.

# TYPES OF DATA PRESENTED

The tabulations and graphs that follow give quantitative data on crimes reported, on arrests and other results of members' performance, and on resources made available to the Department.

Figures for crimes reported conform to FBI practice in its Uniform Crime Reports. Data on Murder, Rape and Aggravated Assault reflect the number of victims when two or more are involved in an incident. Data on Auto Theft show the number of cars stolen. Data on Robbery, Burglary and Theft — \$50 and Over show the number of incidents. In the data on arrests, all figures reflect the number of offenders apprehended.

The base of reporting for the data is identified as either the 12-month calendar year or the 13-period Chicago Police year, which consists of 13 periods, each with 28 days. Differences in resultant

figures may be seen by comparing Tables 1 and 2 and Tables 4 and 5.

## 12-MONTH YEARS

The 12-month calendar year (365 days, 1 January through 31 December) is used where the data relate to FBI, City of Chicago and certain other reports.

## 13-PERIOD YEARS

The 13-period year is used so that valid comparisons can be made according to workload. Each of the 13 periods has 28 days and each of the four weeks in a period begins on the same day of the week. As a result, each week and period, with the same number of days, has the same number of Fridays, Saturdays and Sundays, when peak workloads occur.

# CRIMES REPORTED

## 1. Index Crimes by Months

CALENDAR YEAR, 1 JANUARY THROUGH 31 DECEMBER\*

January . . . . .	9,570
February . . . . .	9,389
March . . . . .	9,723
April . . . . .	10,114
May . . . . .	10,707
June . . . . .	10,498
July . . . . .	11,742
August . . . . .	8,395
September . . . . .	11,651
October . . . . .	13,628
November . . . . .	10,127
December . . . . .	11,310
TOTAL . . . . .	126,854

\* For 13-period data, see Tables 2 and 3.

## 2. Index Crimes by Periods

13-PERIOD YEAR\*

1st Period . . . . .	8,857
2nd Period . . . . .	9,499
3rd Period . . . . .	8,929
4th Period . . . . .	9,400
5th Period . . . . .	9,452
6th Period . . . . .	9,979
7th Period . . . . .	10,323
8th Period . . . . .	9,641
9th Period . . . . .	10,385
10th Period . . . . .	9,864
11th Period . . . . .	9,742
12th Period . . . . .	9,734
13th Period . . . . .	9,909
TOTAL . . . . .	125,714

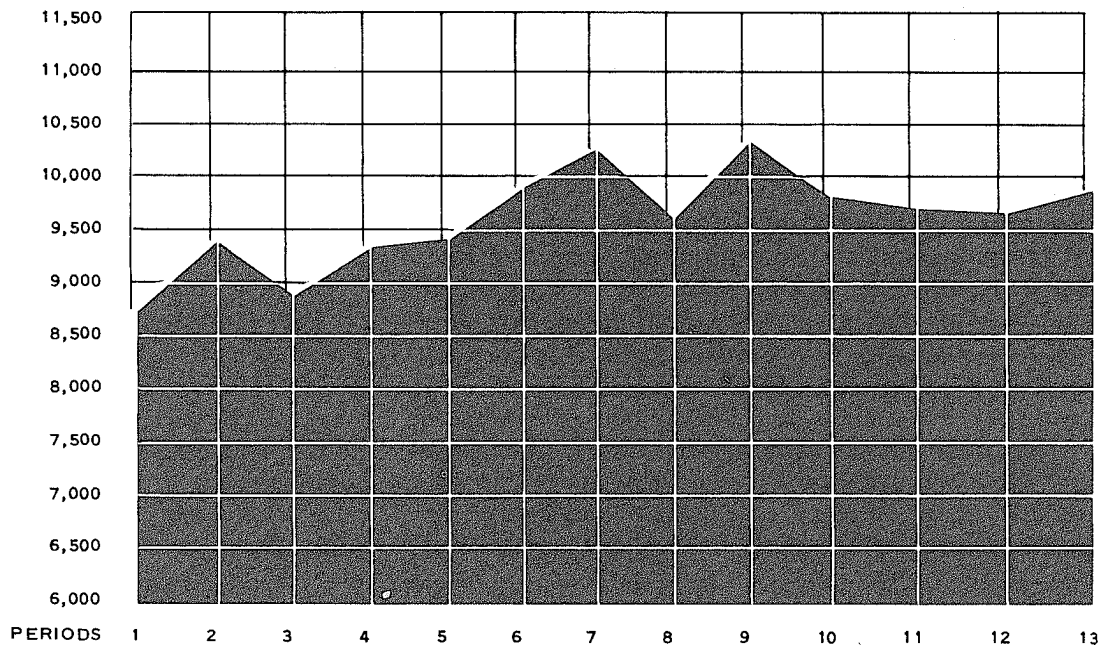
\* Each period 28 days; 7 Jan. 1971 through 5 Jan. 1972. See also graph, Table 3. For 12-month data, see Table 1.

### 3. Index Crimes by Periods

#### 1971 PERIODS

##### Ending Dates

1st	3 February
2nd	3 March
3rd	31 March
4th	28 April
5th	26 May
6th	23 June
7th	21 July
8th	18 August
9th	15 September
10th	13 October
11th	10 November
12th	8 December
13th	5 January



### 4. Index Crimes by Type - Offenses

13-PERIOD YEAR\*

	Number
Murder . . . . .	828
Rape . . . . .	1,516
Aggravated Assault . . . . .	11,173
Robbery . . . . .	23,812
Burglary . . . . .	38,105
Theft, \$50 & Over . . . . .	15,682
Auto Theft. . . . .	34,598
<b>TOTAL INDEX</b> . . . . .	<b>125,714</b>

\* Each period 28 days; 7 Jan. 1971 through 5 Jan. 1972.





Food is the vital ingredient in this district station interview with a youthful citizen.

## 5. Index Crimes by Type — Offenses & Clearances

CALENDAR YEAR, 1 JANUARY THROUGH 31 DECEMBER\*

	OFFENSES	CLEARANCES <sup>a</sup>	
	Number	Number	Percent Cleared
Murder . . . . .	824	739	89.7
Rape . . . . .	1,549	839	54.2
Aggravated Assault . . . . .	11,285	6,876	61.0
Robbery . . . . .	24,012	9,146	38.1
Burglary . . . . .	38,385	10,067	26.2
Theft, \$50 & Over . . . . .	15,593	4,387	28.1
Auto Theft . . . . .	35,206	7,095	20.2
TOTAL INDEX . . . . .	126,854	39,149	30.9

\* For 13-period data, see Table 4.

<sup>a</sup> Solution of a crime. One arrest, death or other event may result in one or more clearances. Clearances shown here relate only to offenses that occurred during the same year.

## 6. Murder Offenses by Type

CALENDAR YEAR, 1 JANUARY THROUGH 31 DECEMBER

Number Killed . . . . . 824

### Location

Indoor  
Residence . . . . . 372  
Place of Entertainment . . . . . 45  
Other . . . . . 50

### Weapons Used

Firearms . . . . . 399  
Handguns . . . . . 399  
Long Guns . . . . . 76  
Unknown Type . . . . . 57  
Knives . . . . . 163  
Other Object or Substance . . . . . 59  
Hands or Feet Only . . . . . 72

### Outdoor

Residence Area . . . . . 29  
Street, Alley, Park, Open Lot . . . . . 299  
Other . . . . . 58

### Ages of Victims and Offenders

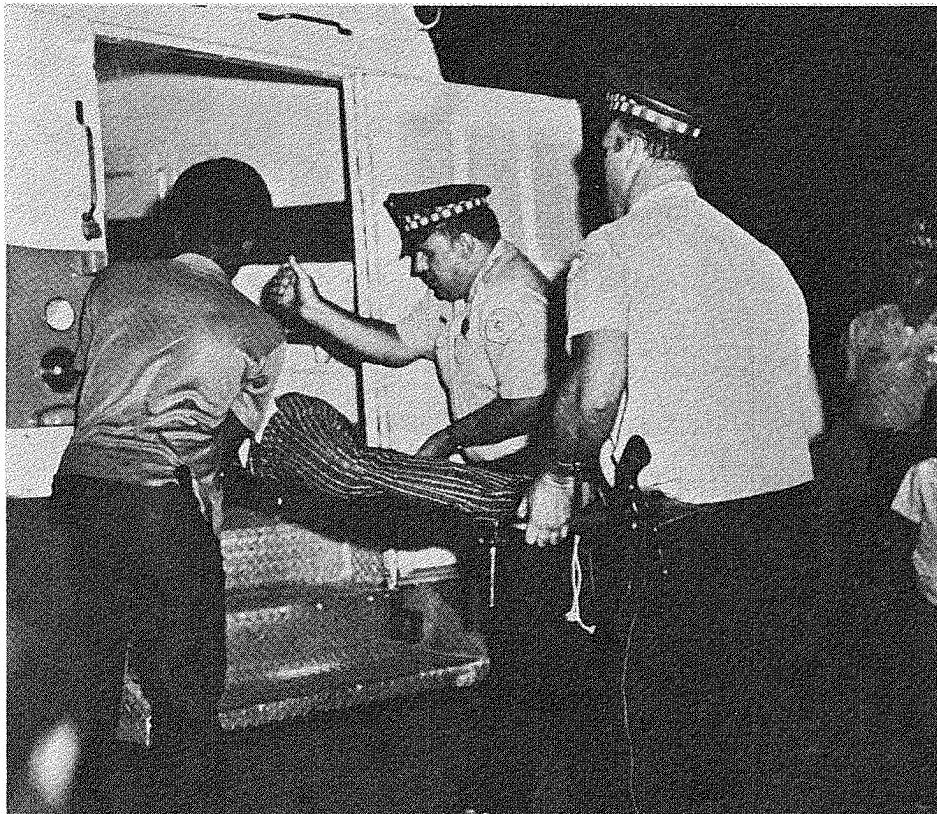
### Motivation

Personal Dispute . . . . . 533  
Robbery, Burglary, etc. . . . . 133  
Sex — Rape, Perversion, etc. . . . . 25  
Other . . . . . 57  
Undetermined . . . . . 76

### Relationship to Victim

Marriage (Legal or Common-Law) . . . . . 88  
Other Familial . . . . . 47  
Friends (Romantic, Neighbor, etc.) . . . . . 142  
Other Acquaintance, Including Business . . . . . 257  
No Relationship . . . . . 209  
Relationship Not Established . . . . . 81

	Victims	Offenders
0-5 . . . . .	18	0
6-10 . . . . .	8	0
11-15 . . . . .	23	49
16-20 . . . . .	123	305
21-25 . . . . .	132	208
26-30 . . . . .	117	117
31-35 . . . . .	72	79
36-40 . . . . .	80	73
41-45 . . . . .	73	54
46-50 . . . . .	51	27
51-55 . . . . .	39	21
56-60 . . . . .	37	8
61 & Over . . . . .	51	19
Unknown . . . . .	0	99
TOTAL . . . . .	824	1,059



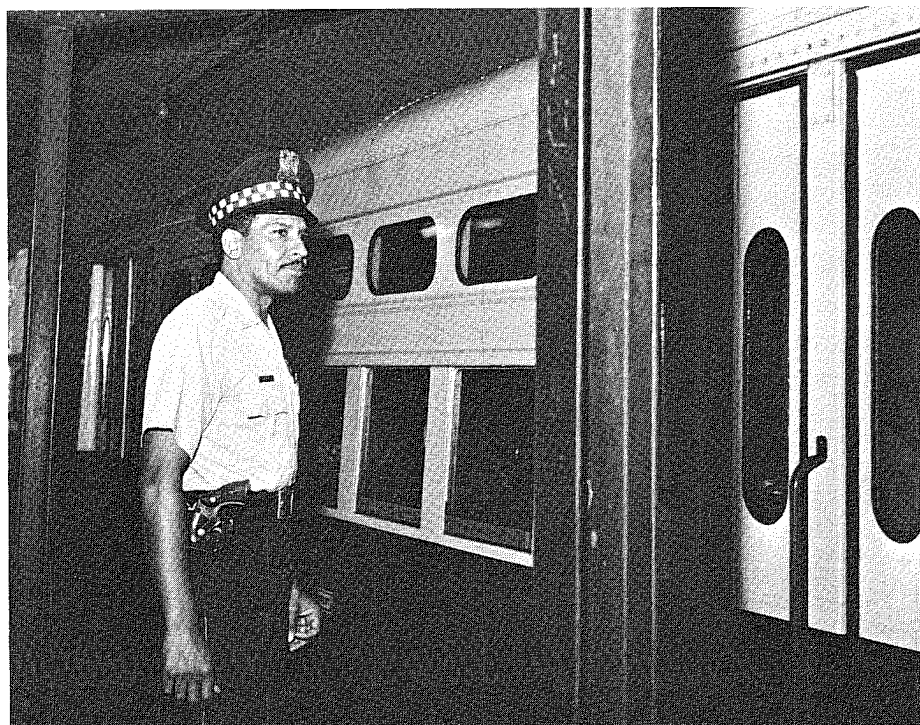
Among the varied duties of squadrol officers is the transport of sick and injured persons. When not on assignment the officers maintain continuous patrol of their beats.

## 7. Robbery, Burglary and Theft Offenses by Type

CALENDAR YEAR, 1 JANUARY THROUGH 31 DECEMBER

	Number of Offenses	Value of Property Stolen		Number of Offenses	Value of Property Stolen
<b>Robbery</b>			<b>Burglary (Continued)</b>		
Streets, Alleys etc. . . .	13,316	\$969,912	Non-Residential		
Residential. . . . .	2,890	326,074	Night . . . . .	6,670	\$2,943,506
Chain Store . . . . .	362	73,148	Day . . . . .	1,739	585,549
Gas or Service Station .	500	52,615	Unknown. . . . .	3,989	2,050,658
Bank. . . . .	22	2,301,109	TOTAL . . . . .	38,385	\$13,714,445
Other Commercial . . . .	2,377	501,580			
Miscellaneous . . . . .	4,545	512,798	<b>Theft <sup>a</sup></b>		
TOTAL . . . . .	24,012	\$2,439,147	Purse Snatching . . . . .	8,715	\$368,903
			Bicycles . . . . .	12,537	233,000
			Auto Parts &		
			Accessories . . . . .	21,276	500,428
			From Auto - Other. . . .	13,253	1,288,072
			Pocket Picking . . . . .	1,547	95,137
			Shoplifting . . . . .	7,034	189,705
			From Coin-Operated		
			Machines (Parking		
			Meter, etc.) . . . . .	521	24,788
			Other from Building . . .	18,557	2,837,600
			All Other . . . . .	12,859	2,329,207
			TOTAL . . . . .	96,499	\$7,866,840
<b>Burglary</b>					
Residential					
Night . . . . .	5,677	\$1,733,101			
Day . . . . .	15,764	4,669,364			
Unknown. . . . .	4,546	1,732,267			

<sup>a</sup> All thefts. Offenses \$50 & Over: 15,593 at \$6,686,564.



The Department's Mass Transit Unit protects citizens on "El" and subway trains and platforms.



## 8. Aggravated Assault Offenses by Type

CALENDAR YEAR, 1 JANUARY THROUGH 31 DECEMBER

Gun .....	3,542
Knife or Cutting Instrument .....	4,734
Other Dangerous Weapon .....	2,150
Hands, Fists, Feet, etc. (Aggravated) .....	859
<b>TOTAL</b> .....	<b>11,285</b>



Field investigation of homicides, rapes and other cases requiring specialized services are assigned to Mobile Unit personnel of the Criminalistics Division.

## 9. Auto Theft Offenses by Type

13-PERIOD YEAR\*

### Thefts

Including Attempts .....	34,598
Not Including Attempts .....	33,107

### Clearances

Number .....	7,546
Percent Cleared .....	21.9%

### Recoveries

Motor Vehicles Stolen in Chicago	
Recovered Within City .....	27,053
Recovered Outside City .....	2,084
<b>TOTAL</b> .....	<b>29,137</b>
Percent Recovered of Total Thefts .....	88.0%

Motor Vehicles Stolen Outside Chicago and Recovered Within City . . . .	1,815
---	-------

\* Each period 28 days; 7 Jan. 1971 through 5 Jan. 1972.

# ARRESTS AND OTHER ACTIONS

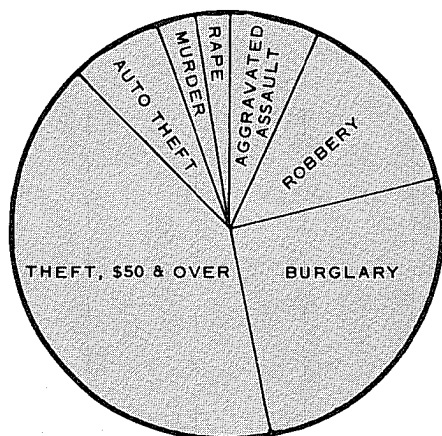
## 10. All Arrests and Citations

CALENDAR YEARS, 1 JANUARY THROUGH 31 DECEMBER\*

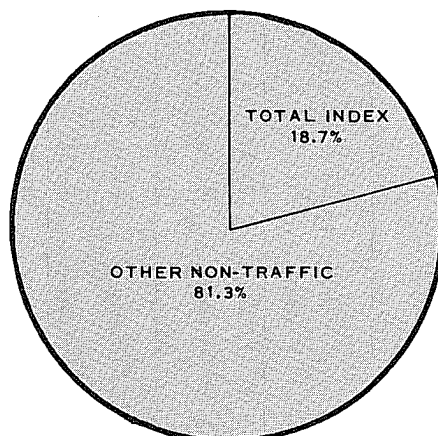
Non-Traffic Violations	Number	Percent
Index Crimes		
Murder . . . . .	1,150	2.2
Rape . . . . .	864	1.6
Aggravated Assault . . . . .	4,185	8.0
Robbery . . . . .	8,424	16.1
Burglary . . . . .	10,698	20.4
Theft, \$50 & Over . . . . .	22,768	43.4
Auto Theft . . . . .	4,362	8.3
TOTAL INDEX . . . . .	52,451	100.0
Other Non-Traffic . . . . .	227,771	....
TOTAL NON-TRAFFIC . . . . .	280,222	....
Traffic Violations		
Hazardous . . . . .	843,005	24.5
Non-Hazardous . . . . .	2,592,372	75.5
TOTAL TRAFFIC . . . . .	3,435,377	100.0

\* See Table 11 for further breakdown.

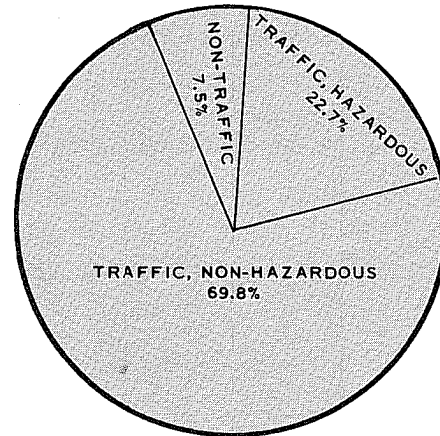
Index Crime Arrests



Non-Traffic Arrests



All Arrests & Citations



# Non-Traffic Actions

## 11. Arrests of Persons by Age and Sex

CALENDAR YEAR, 1 JANUARY THROUGH 31 DECEMBER

Classification	Sex	Ages Under 18	Ages 18 to 20	Ages 21 to 24	Ages 25 to 44	Ages 45 & Over	TOTAL
01a Murder & Non-Negligent Manslaughter . . .	M	200	210	215	329	77	1,031
	F	8	6	24	65	16	119
01b Manslaughter by Negligence . . . . .	M	7	6	5	8	8	34
	F	1	...	2	3	1	7
02 Forcible Rape . . . . .	M	286	196	180	193	9	864
	F	...	...	...	...	...	...
03 Robbery . . . . .	M	2,940	1,760	1,698	1,539	90	8,027
	F	178	50	75	90	4	397
04 Aggravated Assault (Ret. B-4-a-d) . . . . .	M	1,305	451	433	978	357	3,524
	F	298	41	54	209	59	661
05 Burglary—Breaking or Entering . . . . .	M	5,109	1,693	1,461	1,837	219	10,319
	F	175	61	63	73	7	379
06 Larceny—Theft (Except Auto Theft). . . . .	M	8,441	2,571	2,663	4,167	760	18,602
	F	2,035	623	521	790	197	4,166
07 Auto Theft . . . . .	M	1,348	958	848	959	106	4,219
	F	29	28	14	59	13	143
08 Other Assaults (Return B-4e) . . . . .	M	3,643	1,533	1,804	3,777	999	11,756
	F	1,200	151	185	532	144	2,212
09 Arson . . . . .	M	136	15	22	37	5	215
	F	8	1	2	4	...	15
10 Forgery & Counterfeiting . . . . .	M	5	1	8	32	6	52
	F	1	2	2	5	1	11
11 Fraud . . . . .	M	697	295	446	802	165	2,405
	F	76	64	136	204	31	511
12 Embezzlement . . . . .	M	...	...	...	1	...	1
	F	...	...	...	...	...	...
13 Stolen Property: Buying, Receiving, Possessing . . . . .	M	581	81	103	195	40	1,000
	F	39	13	16	28	4	100
14 Vandalism . . . . .	M	3,154	470	378	681	159	4,842
	F	219	21	36	77	23	376
15 Weapons: Carrying, Possessing, etc. . . . .	M	1,478	919	1,234	3,061	1,088	7,780
	F	80	61	67	236	64	508
16 Prostitution & Commercialized Vice . . . . .	M	18	129	262	803	391	1,603
	F	31	404	928	777	79	2,219
17 Sex Offenses (Except Forcible Rape & Prostitution)	M	383	320	336	735	223	1,997
	F	241	40	26	59	9	375

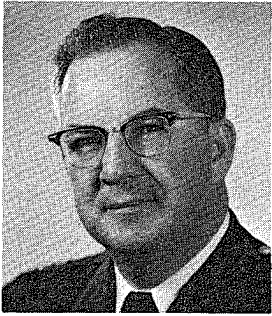


# Arrests of Persons (Continued)

CALENDAR YEAR, 1 JANUARY THROUGH 31 DECEMBER

Classification		Sex	Ages Under 18	Ages 18 to 20	Ages 21 to 24	Ages 25 to 44	Ages 45 & Over	TOTAL
18	NARCOTIC DRUG LAWS, TOTAL . . . . .	M	1,582	2,017	2,585	2,887	310	9,381
		F	245	299	402	462	45	1,453
18a	Opium or Cocaine & Their Derivatives <sup>a</sup> . .	M	115	334	659	1,131	156	2,395
		F	19	70	156	219	26	490
18b	Marijuana . . . . .	M	684	1,286	1,412	1,079	64	4,525
		F	79	151	154	125	6	515
18c	Synthetic Narcotics <sup>b</sup> . . . . .	M	9	12	18	17	2	58
		F	4	2	1	5	1	13
18d	Other — Dangerous Non-Narcotic Drugs <sup>c</sup> .	M	774	385	496	660	88	2,403
		F	143	76	91	113	12	435
19	GAMBLING, TOTAL . . . . .	M	403	508	707	3,210	2,805	7,633
		F	10	35	74	274	474	867
19a	Bookmaking (Horse and Sportbook) <sup>d</sup> . . . .	M	58	33	25	331	528	975
		F	...	8	8	34	66	116
19b	Numbers & Lottery . . . . .	M	4	8	24	239	323	598
		F	...	3	4	64	164	235
19c	All Other Gambling <sup>d</sup> . . . . .	M	341	467	658	2,640	1,954	6,060
		F	10	24	62	176	244	516
20	Offenses Against Family & Children . . .	M	114	177	293	1,002	187	1,773
		F	55	57	60	133	21	326
21	Driving Under the Influence . . . . .	M	56	441	1,240	6,324	3,026	11,087
		F	2	17	30	230	93	372
22	Liquor Laws . . . . .	M	319	328	106	244	158	1,155
		F	51	30	25	47	21	174
23	Drunkenness . . . . .	M	777	1,039	799	6,652	6,933	16,200
		F	121	79	39	174	95	508
24	Disorderly Conduct . . . . .	M	12,490	10,725	12,724	39,318	25,719	100,976
		F	1,741	1,512	2,702	3,712	1,249	10,916
25	Vagrancy . . . . .	M	37	38	52	350	403	880
		F	8	8	8	10	7	41
26	All Other Offenses (Except Traffic) . . . .	M	3,637	1,090	1,430	3,252	1,287	10,696
		F	616	779	2,038	1,299	191	4,923
27	Suspicion . . . . .	M	...	...	...	...	...	...
		F	...	...	...	...	...	...
28	Curfew & Loitering . . . . .	M	806	...	...	...	...	806
		F	36	...	...	...	...	36
29	Run-Aways . . . . .	M	3,775	...	...	...	...	3,775
		F	5,774	...	...	...	...	5,774
TOTAL All Offenses . . . . .		M	53,727	27,971	32,033	83,373	45,530	242,633
		F	13,278	4,382	7,528	9,552	2,848	37,589
			67,005	32,353	39,561	92,925	48,378	280,222

<sup>a</sup> Morphine, heroin, codeine. <sup>b</sup> Manufactured narcotics which can cause true drug addiction (demerol, methadones). <sup>c</sup> Barbiturates, benzedrine. <sup>d</sup> Owing to 1971 revision in coding of data for Classifications 19a, Bookmaking, and 19c, All Other Gambling, comparison with data of prior years should be avoided.



**SUPERINTENDENT  
OF POLICE**  
James B. Conlisk, Jr.

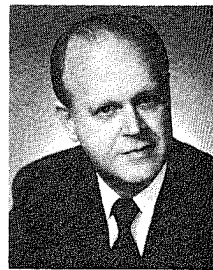
**EXECUTIVE STAFF**  
Executive Assistant  
Aide & Legal Coordinator  
Administrative Assistant  
Director of News Affairs  
Department Liaison Officer

**RESEARCH & DEVELOPMENT DIVISION**  
Director:

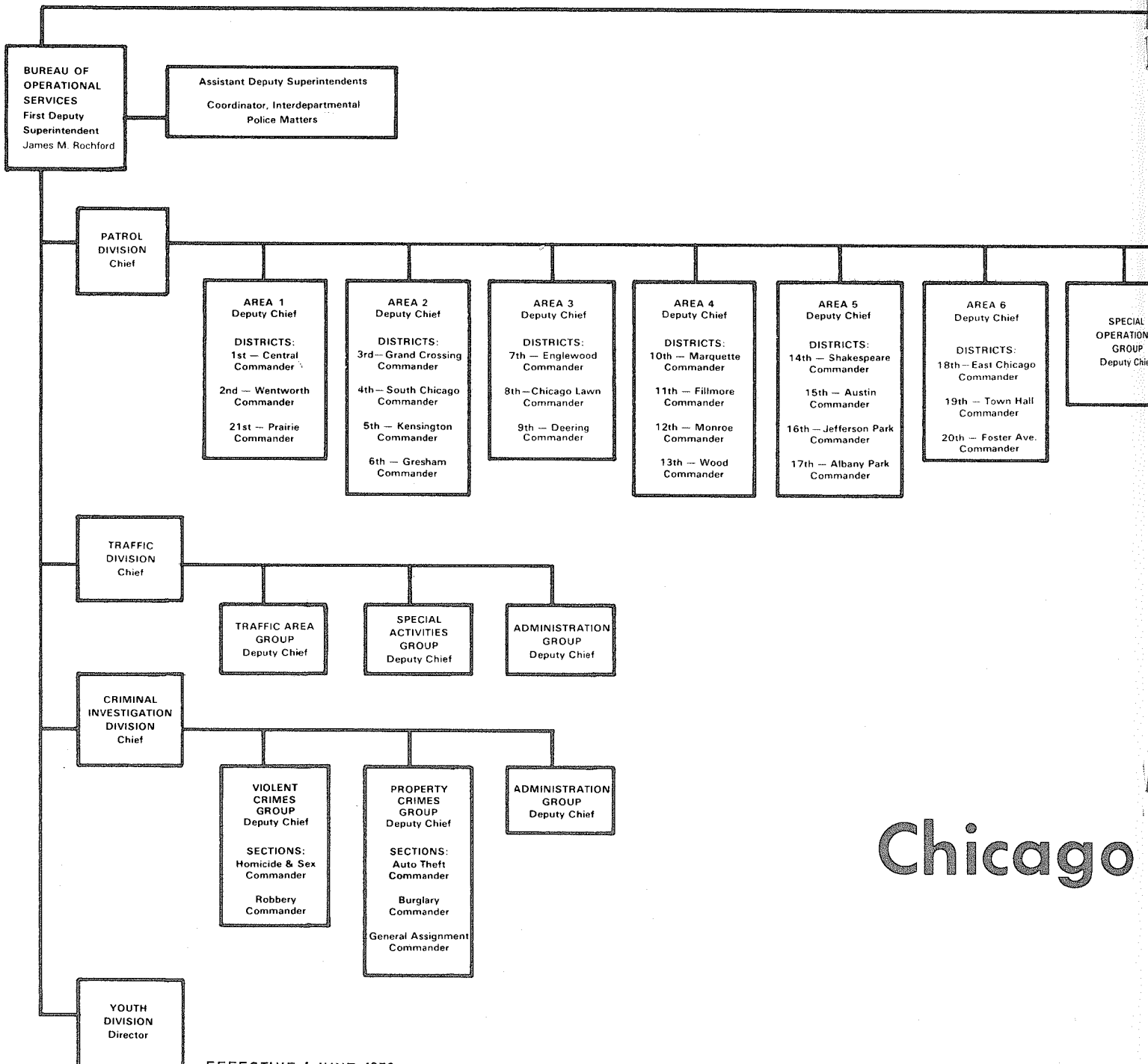
**POLICE BOARD**



Paul W. Goodrich



Marlin W. Johnson

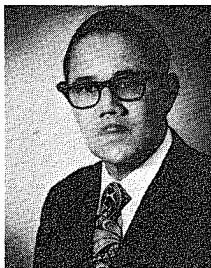


Chicago

EFFECTIVE 1 JUNE 1972



Morgan F. Murphy

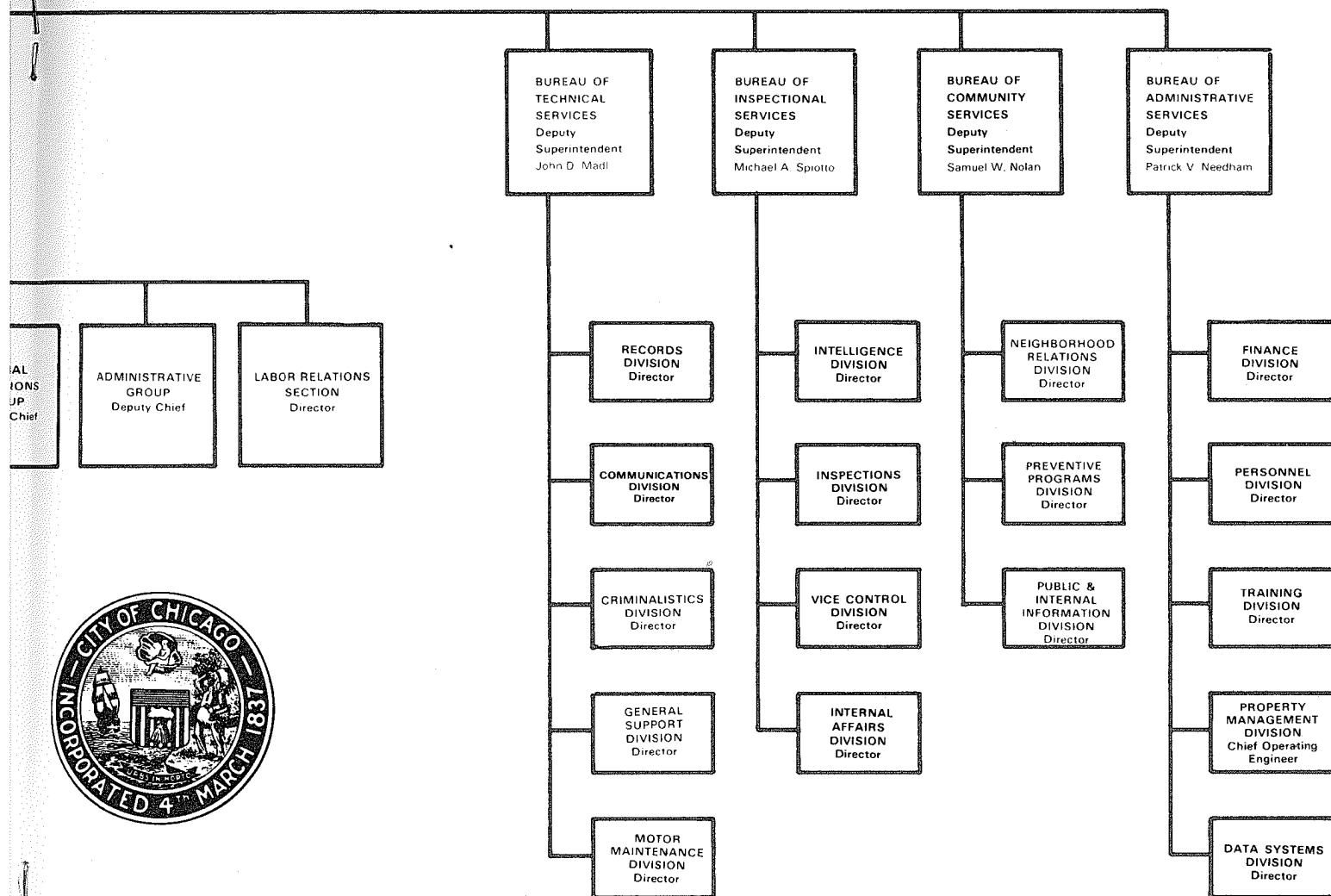


Rev. Wilbur Daniel



Ray Schoessling

MAYOR  
Richard J. Daley

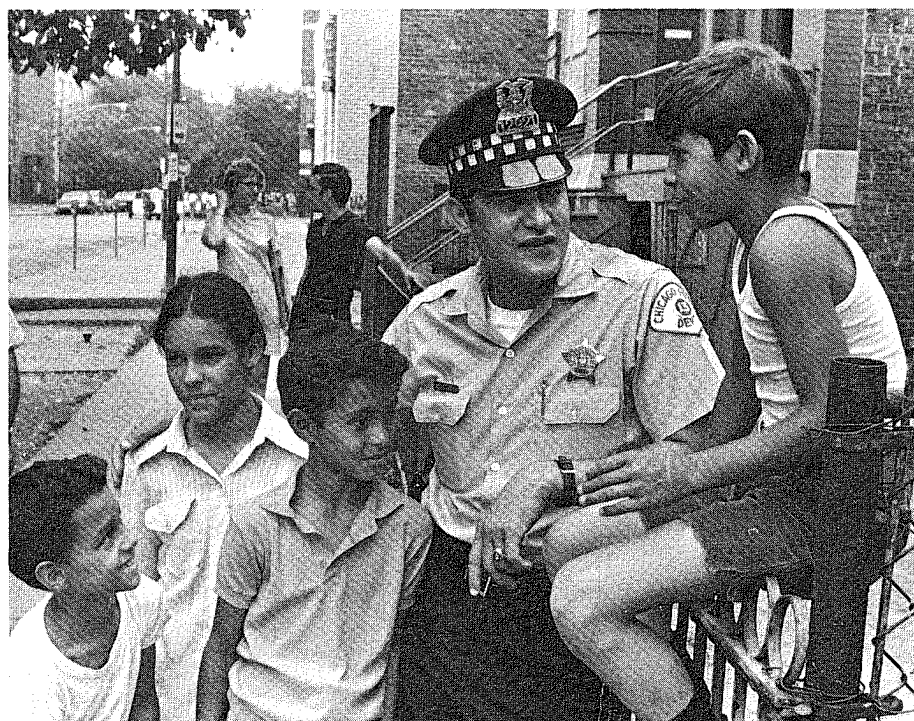


# Police Department Organization





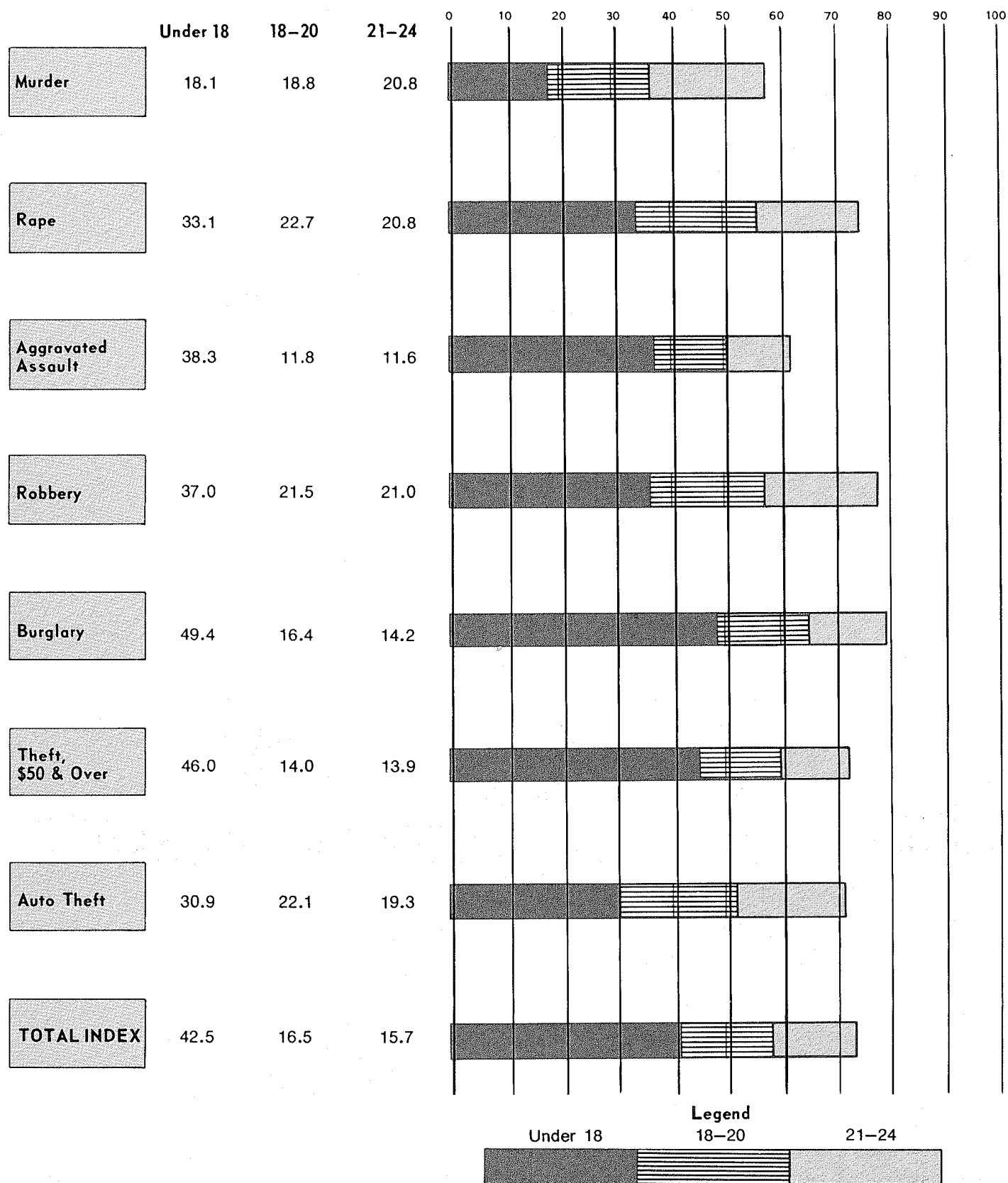
At individual tables, youngsters join with officers at a youth crime prevention seminar.



Laying the foundations for effective communication between citizens and the police.

# 12. Index Crime Arrests of Persons Under 25 by Percentages

CALENDAR YEAR 1 JANUARY THROUGH 31 DECEMBER



## 13. Disposition of Juveniles

13-PERIOD YEAR\*

### Processed Within Department

School Absentees . . . . .	46,717
Curfew Violators (Notice to Parents) . . .	101,193
Community Adjustments (Minor Violations - Interview & Formal Release to Parents) . . . . .	10,301
Referred to Youth Service Agency . . . . .	31,019
Referred to Other Police Agency . . . . .	198
Referred to Juvenile Court of Cook County . .	17,973
Referred to Criminal Court . . . . .	77

\* Each period 28 days; 7 Jan. 1971 through 5 Jan. 1972.

## 14. Missing Persons

CALENDAR YEAR, 1 JANUARY THROUGH 31 DECEMBER\*

### Juvenile Males (Under 17)

Reported . . . . .	6,826
Located . . . . .	6,845

### Juvenile Females (Under 18)

Reported . . . . .	9,068
Located . . . . .	8,912

### Adult Males

Reported . . . . .	2,677
Located . . . . .	2,626

### Adult Females

Reported . . . . .	1,753
Located . . . . .	1,719

\* Case reports filed. Does not include runaways (see Table 11).



In high summer, citizen safety on Chicago's splendid beaches is a major responsibility for officers of the Helicopter/ Marine Unit.





Among police - community workshops is this meeting for senior citizens.

## 15. Community Service Activities

CALENDAR YEAR, 1 JANUARY THROUGH 31 DECEMBER

<b>Police - Community Workshops, Attendance<sup>a</sup></b>	51,894
<b>Other Police - Community Meetings,</b>	
Attendance . . . . .	210,306
<b>Citizen Complaints Handled<sup>b</sup></b>	5,880
<b>Officer Friendly Visits<sup>c</sup></b>	
Visits Made . . . . .	34,496
Children Visited . . . . .	576,576
<b>Youth Activities, Children Involved<sup>d</sup></b>	218,851
<b>Headquarters Tours, Persons Conducted</b>	40,845
<b>Speaking Engagements Arranged</b>	541

<b>Mobile Exhibit Cruiser</b>	
Engagements . . . . .	90
Attendance . . . . .	327,292
<b>Human Relations Activities</b>	
Investigations Made . . . . .	378
Meetings Attended . . . . .	650
<b>Publications, Copies Distributed</b>	
Star Magazine, Monthly . . . . .	16,000
Community Workshop Reporter, Monthly . . . . .	4,500
Pamphlets and Booklets . . . . .	610,984

<sup>a</sup> At least one meeting per month in each district (except Central); steering committee meetings not included.

<sup>b</sup> Neighborhood problems investigated by district community service personnel.

<sup>c</sup> School year ending June 1971. Series of visits to classrooms, kindergarten through 8th grade. Not included here: 1,575 visits to 19,687 high school students in school year ending June 1971.

<sup>d</sup> Participation by district personnel in Mayor's "Reach-Out" program on a year-round basis. Included tours, field trips, sports events, etc. for ages 8 through 18 and employment referrals for high school youth and young adults. Trips by Department-provided bus totaled 1,171.

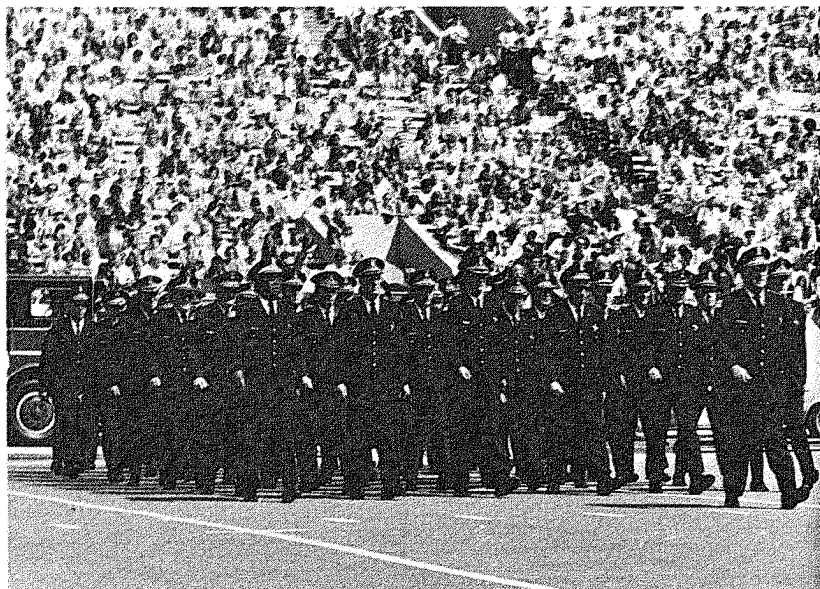
## 16. Man-Hours for Special Events

13—PERIOD YEAR\*

Parades . . . . .	31,514
Expositions, Fairs, etc. . . . .	37,285
Sporting Events . . . . .	36,076
Security for Visiting Dignitaries . .	54,346
Labor Controversies . . . . .	3,829
Demonstrations <sup>a</sup> . . . . .	33,892
<b>TOTAL . . . . .</b>	<b>231,966</b>

\* Each period 28 days; 7 Jan. 1971 through 5 Jan. 1972

<sup>a</sup> Includes numerous demonstrations that led to minor disturbances of brief duration.



After an absence of 30 years, the Chicago Police-Fire Thrill show returned to Chicago as part of Mayor Daley's 14th Annual Lakefront Festival.

## 17. Activities of Special Units

13—PERIOD YEAR\*

### Marine

Incidents . . . . .	838
Tows . . . . .	384
Navigational Hazards Removed . . . . .	392

### Canine

Arrests . . . . .	3,031
Building & Field Searches . . . . .	1,185
<b>C.T.A. Arrests . . . . .</b>	<b>22,963</b>
<b>Helicopter, Resultant Arrests<sup>a</sup> . . . . .</b>	<b>54</b>

### Tactical

Missions . . . . .	141
Arrests . . . . .	58,680

### Labor Relations

Investigations . . . . .	10,945
Strikes . . . . .	107

\* Each period 28 days; 7 Jan. 1971 through 5 Jan. 1972.

<sup>a</sup> Arrests made possible by participation of helicopter units.



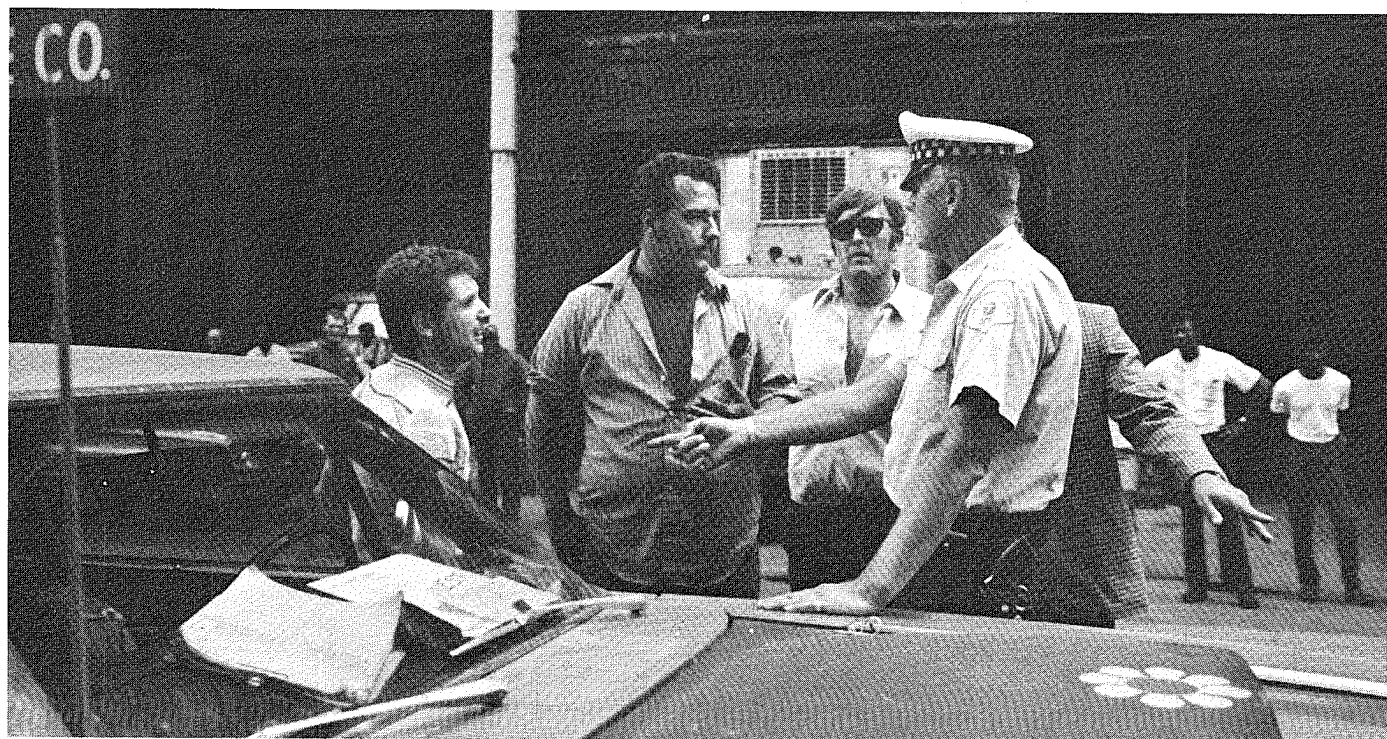
Chicago says "We're glad you're herel" when astronauts come to town.

# Traffic Enforcement and Accidents

## 18. Traffic Accident Causes and Arrests by Type of Violation

CALENDAR YEAR, 1 JANUARY THROUGH 31 DECEMBER*	Number of Causes	Percent of Total	Number of Citations	Percent of Total
Following Too Closely . . . . .	29,822	17.8	25,754	3.1
Vehicle Right-of-Way . . . . .	24,460	14.6	8,560	1.0
Speeding . . . . .	11,092	6.6	166,832	19.8
Improper Turning . . . . .	7,439	4.4	184,769	21.9
Driving Wrong Side of Road . . . . .	4,539	2.7	12,038	1.4
Disobeying Signs & Signals . . . . .	4,940	2.9	147,792	17.6
Disregarding Pedestrian Right-of-Way . . . . .	3,296	2.0	5,797	0.7
Driving Intoxicated . . . . .	6,279	3.7	15,529	1.8
Improper Passing . . . . .	3,502	2.1	6,773	0.8
Disregarding Through Street Stop . . . . .	979	0.6	49,917	5.9
Vision Obstruction . . . . .	.....	...	3,067	0.4
Improper Start from Parked . . . . .	.....	...	4,575	0.5
Improper Operator's Signals . . . . .	.....	...	30,080	3.6
Obstructing Traffic . . . . .	.....	...	15,502	1.8
Reckless Driving . . . . .	.....	...	35,417	4.2
Driving Outside Authorized Lanes . . . . .	.....	...	43,212	5.1
Other Driving Violations . . . . .	71,485	42.6	87,391	10.4
TOTAL . . . . .	167,833	100.0	843,005	100.0

\* Hazardous violations only. Total citations issued for both hazardous and non-hazardous violations (parking, etc.) were 3,435,377.



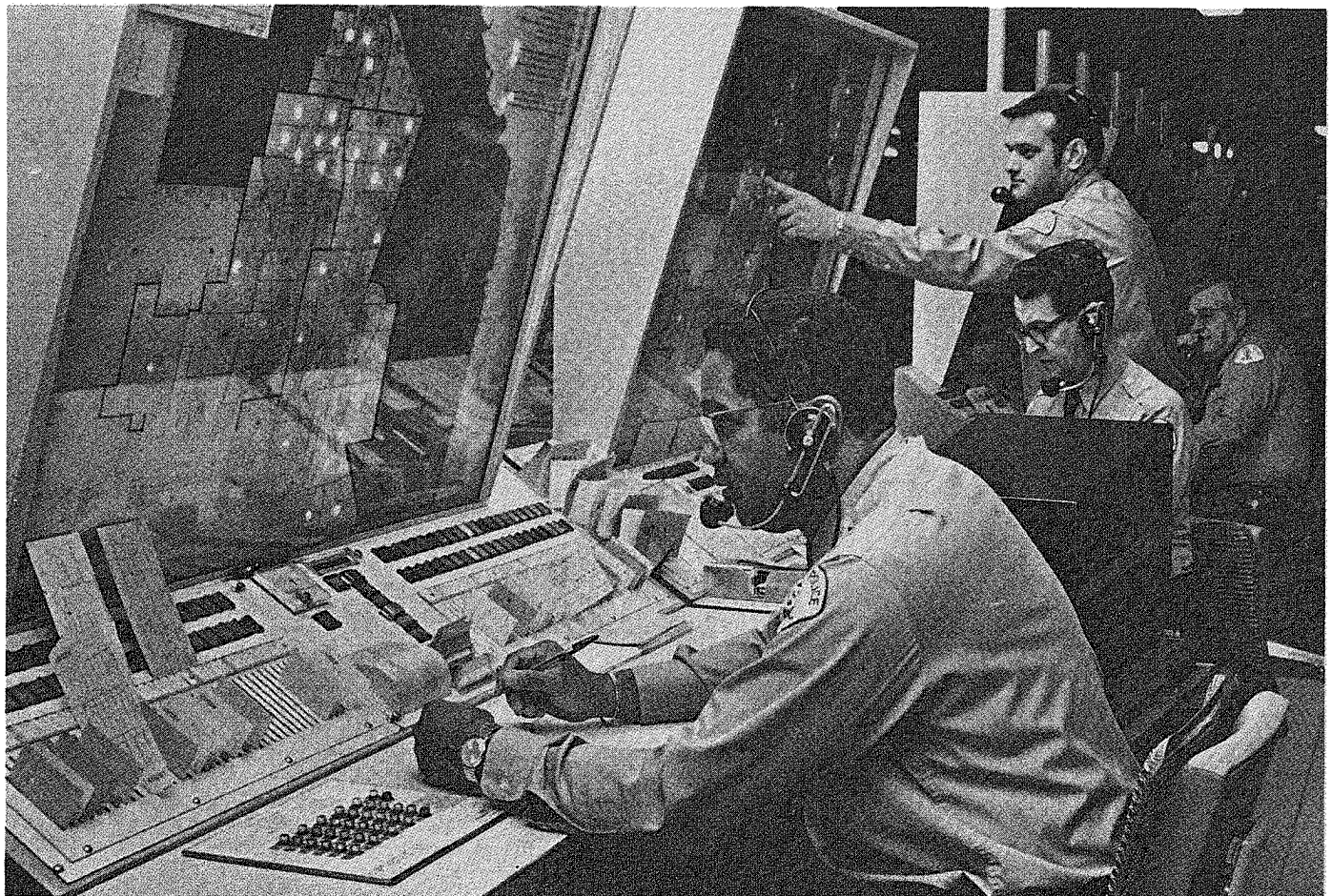
A Traffic Division officer (white-topped cap) helps citizens toward amicable solution of a dispute.



# 19. Traffic Accidents by Type of Accident

CALENDAR YEAR, 1 JANUARY THROUGH 31 DECEMBER

	NUMBER OF ACCIDENTS				NO. OF PERSONS	
	All Accidents	Fatal	Non-Fatal	Property Damage	Total Killed	Total Injured
Ran Off Road . . . . .	5,065	44	1,546	3,475	46	2,184
Overtaken on Road . . . . .	189	...	133	56	...	165
Struck Pedestrian . . . . .	7,737	121	7,616	...	122	7,999
Struck Motor Vehicle in Traffic . . .	100,845	62	13,407	87,376	67	23,355
Struck Parked Motor Vehicle . . . . .	34,063	9	1,547	32,507	9	2,046
Struck Railroad Train . . . . .	67	2	26	39	3	41
Struck Bicyclist . . . . .	1,776	10	1,334	432	9	1,423
Struck Animal . . . . .	49	...	4	45	...	5
Struck Fixed Object . . . . .	1,301	13	396	892	14	561
Struck Other Object . . . . .	346	...	50	296	...	62
Other Non-Collision . . . . .	957	2	551	404	2	665
Other . . . . .	1,361	...	228	1,133	...	315
TOTAL . . . . .	153,756	263	26,838	126,655	272	38,821



The Chicago Police Communications Center has long since set the standard for metropolitan police departments throughout the world.

# STAFF UNIT SERVICES

## 20. Communications Center

13-PERIOD YEAR\*

Incoming Telephone Calls	
Answered <sup>a</sup> . . . . .	3,890,921
Radio Calls Made	
Dispatching <sup>b</sup> . . . . .	2,169,439
Other (Administrative, etc.) . . .	2,111,475
TOTAL . . . . .	4,280,914
Messages Sent <sup>c</sup>	
Facsimile . . . . .	1,075,715
Teletype . . . . .	45,428
Point-to-Point Radio Messages <sup>d</sup>	
Stolen Auto Inquiries Received .	44,878
Other Messages Sent or Received	25,614

\* Each period 28 days; 7 Jan. 1971 through 5 Jan. 1972.

<sup>a</sup> Includes all PO 5-1313 calls received by dispatchers whether from citizens or other agencies and whether resulting in vehicles dispatched, referrals made or instructions given. Also includes transferred 744-4000 Centrex calls.

<sup>b</sup> Radio dispatch cards made. Does not include extra (assist) cars sent through the initial dispatch.

<sup>c</sup> To districts and other Department units. Facsimile transmission used for operational messages; teletype for administrative.

<sup>d</sup> Suburban, Statewide and Nationwide.

## 21. Records Inquiries

13-PERIOD YEAR\*

Radio Dispatch Cards Sorted . . . . .	2,169,439
Field Reports	
Case Reports <sup>a</sup>	
Processed & Filed . . . . .	1,257,678
Reproduced & Distributed . .	12,754,458
Traffic Reports Processed	
& Filed . . . . .	167,016
Report File Searches	
Searches Made	
(Official & Citizen) . . .	937,274
Reproduction Fees (Citizens)	\$208,779.00
Index Cards <sup>b</sup>	
In Master Files, Year-End . . . .	4,762,584
Purged <sup>c</sup> . . . . .	999,537
Prepared . . . . .	1,604,882
Property Records Processed & Filed <sup>d</sup>	155,186

\* Each period 28 days; 7 Jan. 1971 through 5 Jan. 1972.

<sup>a</sup> Original and supplementary non-traffic code and vice reports.

<sup>b</sup> "Alpha" files. Includes names of arrestees, victims and complainants, and wanted persons.

<sup>c</sup> Includes 1969 victim cards, warrants and CB cards.

<sup>d</sup> Articles lost, stolen and recovered.

## 22. Field Inquiries

13—PERIOD YEAR\*

### Wanted Persons Inquiries

Computer .....	414,199
Manual <sup>a</sup> .....	53,743
TOTAL .....	467,942

### Stolen Auto Inquiries

Computer .....	626,446
Manual .....	75,173
TOTAL .....	701,619

### Other Computer Inquiries <sup>b</sup> .....

Inquiries into NCIC <sup>c</sup> ..... 282,972

Inquiries via LEADS <sup>d</sup> ..... 153,089

### Warrants

Registered .....	125,313
Served .....	57,031
Extraditions and Turnovers .....	1,127

\* Each period 28 days; 7 Jan. 1971 through 5 Jan. 1972.

<sup>a</sup> Manual searches made when computer was inoperative due to maintenance, reorganization, etc. Manual searches estimated.

<sup>b</sup> Includes inquiries on Temporary Steals, Recoveries, etc.; data included above under "Stolen Auto Inquiries, Computer."

<sup>c</sup> Inquiries into computer at National Crime Information Center, Washington, D.C., yielded 3,516 positive identifications.

<sup>d</sup> Messages via the 48-state network of the Law Enforcement Agencies Data System include vehicle registration inquiries to Springfield, Illinois.

## 23. Evidence and Recovered Property

13—PERIOD YEAR\*

### Property Recovered and Disposed of

#### Inventories <sup>a</sup>

Received .....	59,981
Disposed of .....	55,583
Year-End Balance <sup>b</sup> .....	61,869
Returned to Owners .....	7,848
Turned Over to Other	
Government Agencies ..	1,450
Sold at Auctions .....	2,745
Destroyed, Narcotics .....	6,583
Destroyed, Other Property ..	26,945
Firearms Destroyed at Steel Works	
Inventories <sup>a</sup> .....	9,350
Pieces (Units) .....	10,050

### Monies Disbursed

Owners (Cash) .....	\$408,821.00
Police Pension Fund <sup>c</sup>	
Unclaimed Monies .....	36,501.00
Net Proceeds from Auction ..	77,142.00
County Treasurer	
(Gambling Seizures) .....	28,416.00
TOTAL .....	\$550,880.00

\* Each period 28 days; 7 Jan. 1971 through 5 Jan. 1972.

<sup>a</sup> A property inventory includes up to 12 items (recorded on CPD form 23-598) taken into custody in connection with a crime. A crime may yield one or more inventories; and an item of inventory one or more units of property.

<sup>b</sup> 1970 year-end balance was 57,562.

<sup>c</sup> City of Chicago Policemen's Annuity & Benefit Fund.

## 24. Identification

13—PERIOD YEAR\*

### Fingerprints Compared to Fingerprints in Files

Criminal (Arrestees)	
Submitted . . . . .	123,904
Found Identical . . . . .	76,305
Non-Criminal (Applicants, etc.)	
Submitted . . . . .	53,480
Found Identical . . . . .	11,370
Dead, Injured, Shot, etc.	
Submitted . . . . .	2,409
Found Identical . . . . .	1,568

### Latent Fingerprints<sup>a</sup>

Evaluated	
Submitted . . . . .	12,278
Found Suitable for Comparison . . . . .	8,489
Fingerprints Compared to Latent	
Submitted . . . . .	20,573
Found Identical . . . . .	1,511

### Records

Arrest Reports Processed . . . . .	269,076
Wanted Persons Notices	
Filed . . . . .	3,828
Cancelled . . . . .	3,913
Record Checks Made	
Inquiries at Counter . . . . .	219,761
Inquiries by Mail . . . . .	15,789

### Photo Services

Photos Received & Filed	
Black & White . . . . .	76,326
Color . . . . .	4,316
Photoprints Supplied to	
Authorized Persons . . . . .	122,376

\* Each period 28 days; 7 Jan. 1971 through 5 Jan. 1972.

<sup>a</sup> "Dusted" and other prints obtained at crime scene. Comparisons made to determine presence of persons, criminal or other, at scene.

## 25. Automotive Pounds

13—PERIOD YEAR\*

### Number of Vehicles

On Hand, Year-End <sup>a</sup>	
Immediate <sup>b</sup> . . . . .	2,136
Abandoned . . . . .	2,865
TOTAL . . . . .	5,001
Towed	
Immediate <sup>b</sup> . . . . .	40,109
Abandoned . . . . .	47,214
TOTAL . . . . .	87,323
Released to Owners	
Immediate <sup>b</sup> . . . . .	29,858
Abandoned . . . . .	3,210
TOTAL . . . . .	33,068
Confiscated & Released	
to Sheriff . . . . .	313
Sold at Auction . . . . .	1,571
Sold for Scrap . . . . .	53,640

### Monies Received

Auction <sup>c</sup> . . . . .	\$200,217.50
Scrap <sup>d</sup> . . . . .	398,396.85
Towing . . . . .	628,020.00
Storage . . . . .	358,008.65
TOTAL . . . . .	\$1,584,643.00

\* Each period 28 days; 7 Jan. 1971 through 5 Jan. 1972.

<sup>a</sup> Total capacity: 8,000 in seven facilities in both years.

<sup>b</sup> Towed immediately because stolen, property of prisoner, involved in accident, traffic hazard (including abandoned noted as hazard), etc.

<sup>c</sup> Gross income (auctioneer's commission and expenses not deducted).

<sup>d</sup> Vehicles sold by City Purchasing Agent under contract.



## 26. Vehicles

CALENDAR YEAR, 1 JANUARY THROUGH 31 DECEMBER

	Avg. Mileage When Traded	Number Purchased <sup>a</sup>	Number On Hand, Year-End
Uniform, 6-Cylinder . . . . .	60,000 <sup>b</sup>	0 <sup>b</sup>	415
Uniform, 8-Cylinder . . . . .	75,000	551	549
Unmarked, 6-Cylinder . . . . .	60,000 <sup>b</sup>	0 <sup>b</sup>	445
Unmarked, 8-Cylinder . . . . .	75,000	245	260
Squadrols . . . . .	75,000	63	69
Prisoner Vans (Large) <sup>c</sup> . . . . .	..... <sup>d</sup>	0	12
Trucks & Station Wagons . . . . .	50,000	22	67 <sup>e</sup>
Motorcycles, 3-wheel . . . . .	50,000	0	198
Motorcycles, 2-wheel . . . . .	50,000	0	10
Expropriated <sup>f</sup> . . . . .	.....	...	27
TOTAL ASSIGNED . . . . .	.....	870	2,052
Pool (Temporary Replacements) <sup>g</sup> . . . . .	.....	...	486
TOTAL, ALL VEHICLES . . . . .	.....	870	2,538
Total Mileage . . . . .	56,901,497		

<sup>a</sup> Total expenditures for new vehicles, \$2,343,677.45.

<sup>b</sup> 6-cylinder vehicles model 1970 traded at 65,000 miles. Replaced by 8-cylinder in 1971.

<sup>c</sup> Air conditioned; suitable for transport of sworn personnel to and from special missions.

<sup>d</sup> Replaced as necessary.

<sup>e</sup> Includes two trucks adapted for emergency use as prisoner vans.

<sup>f</sup> Unclaimed, abandoned or stolen cars retained for police undercover use.

<sup>g</sup> Includes: vehicles for administrative use; temporary replacements for vehicles being serviced; and vehicles out of service.



Department service vehicles have demountable bodies. Squadrol bodies placed in service in 1964 are still in use and some may remain serviceable for yet another five years.

## 27. Animal Care

13-PERIOD YEAR\*

Stray Dog Complaints Received . . . . .	13,862
Stray Animals Caught . . . . .	9,706
Animal Bite Reports Processed . . . . .	18,626
Biter Animals Impounded for	
Rabies Observation <sup>a</sup> . . . . .	4,829
Rabid Animal Cases . . . . .	None
Court Citations Issued . . . . .	1,097
Total Number of Animals Handled . . . . .	19,107

\* Each period 28 days; 7 Jan. 1971 through 5 Jan. 1972.

<sup>a</sup> Does not include animals impounded by private veterinarians.

## 28. Training

CALENDAR YEAR, 1 JANUARY THROUGH 31 DECEMBER

	NUMBER OF STUDENTS	MAN-DAYS
<b>Recruits</b>		
Chicago . . . . .	935	112,200
Suburban . . . . .	86	4,138
<b>Special Students</b> . . . . .	99	1,247
<b>Pre-Service</b> . . . . .	400	6,685
<b>In-Service</b> . . . . .	3,260	18,760
<b>Specialized</b> . . . . .	1,528	9,288
<b>Civilian</b> . . . . .	1,315	5,701
<b>TOTAL</b> . . . . .	7,524	158,019



Fr. Donald Gaugush tells a class of recruits about activities of Department chaplains.

# DEPARTMENT RESOURCES

## 29. Budget Appropriations

CALENDAR YEAR, 1 JANUARY THROUGH 31 DECEMBER

Personal Services (Salaries, Wages, etc.) . . . . .	\$198,420,711.00
Contractual Services <sup>a</sup> . . . . .	4,238,763.00
Travel . . . . .	22,686.00
Commodities <sup>b</sup> . . . . .	3,490,284.00
Equipment (Automotive, Communications, etc.) . .	3,627,024.00
Improvements (Buildings) . . . . .	122,652.00
Specific Purposes <sup>c</sup> . . . . .	50,000.00
Contingencies . . . . .	100,000.00
<b>TOTAL</b> . . . . .	<b>\$210,072,120.00</b>

<sup>a</sup> Rentals and repairs of equipment; professional and technical services; utilities; etc.

<sup>b</sup> Gasoline, repair parts, material, supplies, etc.

<sup>c</sup> Special, one-time allocations; also pension fund.



## 30. Salary Schedules

CALENDAR YEAR, 1 JANUARY THROUGH 31 DECEMBER\*

Superintendent . . . . .	\$33,500.00
First Deputy Superintendent <sup>a</sup> . . . . .	32,000.00
Deputy Superintendent . . . . .	30,500.00
Chief . . . . .	28,000.00
Asst. Deputy Superintendent, Deputy Chief . . . . .	24,828.00
Director, Commander . . . . .	21,468.00
Coordinator (Human Relations, Community Relations) . . . . .	18,588.00
Captain <sup>b</sup> . . . . .	19,356.00
Lieutenant <sup>b</sup> . . . . .	17,568.00
Sergeant <sup>b</sup> . . . . .	15,180.00
Detective, Dispatcher, Youth Officer, etc. <sup>b</sup> . . . . .	13,920.00
Patrolman, Policewoman, Police Matron <sup>b, c</sup> . . . . .	12,972.00
Cadet <sup>d</sup> . . . . .	5,892.00
Crossing Guard <sup>e</sup> . . . . .	3.78

\* Maximum annual rates unless otherwise noted.

<sup>a</sup> Established 1 January 1970.

<sup>b</sup> Longevity increases of approximately 2% (not shown) established 1 January 1970. Effective for captain, lieutenant, sergeant and detective ranks after one year at the maximum rate in the same rank and after five years of continuous service. Effective for patrolman rank after 12 months at the maximum rate (five years of continuous service). Additional longevity increases of approximately 2% established 1 January 1971. Effective for the aforementioned after 10 years of continued service.

<sup>c</sup> Progressive rates for patrolman rank:

First six months . . . . .	\$10,272.00
After six months . . . . .	10,788.00
After 18 months . . . . .	11,316.00
After 30 months . . . . .	11,964.00
After 42 months (maximum rate, above) . . . . .	12,972.00

<sup>d</sup> Maximum annual rates before reaching the age-20 maximum (after 18 months and up to 30 months). First six months, \$5,340.00. After six months, \$5,604.00

<sup>e</sup> Maximum hourly rates after ten years. Starting rate, \$2.82.



Crossing guards also "serve and protect."



## 31. Population and Land Areas

		POPULATION*		AREA	
		NUMBER	RANK	SQ.MILES	RANK
1	Central . . . . .	9,775	21	2.895	21
2	Wentworth . . . . .	145,799	14	4.751	18
21	Prairie . . . . .	<u>100,020</u>	19	<u>5.061</u>	17
AREA 1 (Total) .		255,594	6	12.707	6
3	Grand Crossing .	139,697	16	5.522	15
4	South Chicago . .	177,796	8	26.309	2
5	Kensington . . . .	195,183	5	20.036	4
6	Gresham . . . . .	<u>179,837</u>	7	<u>16.225</u>	5
AREA 2 (Total) .		692,513	2	68.092	1
7	Englewood . . . .	159,411	12	6.534	12
8	Chicago Lawn . .	229,717	2	23.609	3
9	Deering . . . . .	<u>166,411</u>	11	<u>12.663</u>	6
AREA 3 (Total) .		555,539	4	42.806	3
10	Marquette . . . . .	155,030	13	7.207	11
11	Fillmore . . . . .	129,901	17	4.750	19
12	Monroe . . . . .	85,873	20	6.282	13
13	Wood . . . . .	<u>140,135</u>	15	<u>5.153</u>	16
AREA 4 (Total) .		510,939	5	23.392	4
14	Shakespeare. . . .	168,845	10	7.752	10
15	Austin . . . . .	195,777	4	11.948	7
16	Jefferson Park . .	215,901	3	28.417	1
17	Albany Park . . .	<u>169,709</u>	9	<u>10.540</u>	9
AREA 5 (Total) .		750,232	1	58.657	2
18	East Chicago . . .	108,738	18	4.250	20
19	Town Hall . . . . .	190,146	6	5.703	14
20	Foster Avenue . .	<u>303,256</u>	1	<u>11.637</u>	8
AREA 6 (Total) .		602,140	3	21.590	5
CITY TOTAL . . . . .		3,366,957		227.244	

\* District and area population figures, based on preliminary 1970 census tract counts, are estimated.

## 32. Department Locations

For emergency service, phone PO 5-1313; for all other calls, dial numbers shown below.

### DEPARTMENT HEADQUARTERS

1121 S. State St. (60605)

Non-emergency phone calls:

Weekdays—see detailed listing in Telephone Directory

Nights & weekends, 744-6301

### Traffic Division Headquarters

54 W. Hubbard St. (60611), 744-4804

### Districts

#### IN FIRST AREA:

1st — Central, 11 E. 11th St. (60605), 744-6230

2nd — Wentworth, 5101 S. Wentworth Ave. (60609), 744-8366

21st — Prairie, 300 E. 29th St. (60606), 744-8340

#### IN SECOND AREA:

3rd — Grand Crossing, 831 E. 75th St. (60619), 744-8201

4th — South Chicago, 2938 E. 89th St. (60617), 744-8205

5th — Kensington, 200 E. 115th St. (60628), 744-8210

6th — Gresham, 819 W. 85th St. (60620), 744-8214

#### IN THIRD AREA:

7th — Englewood, 6120 S. Racine Ave. (60636), 744-8220

8th — Chicago Lawn, 3515 W. 63rd St. (60629), 744-8224

9th — Deering, 3501 S. Lowe Ave. (60609), 744-8227

#### IN FOURTH AREA:

10th — Marquette, 2259 S. Damen Ave. (60608), 744-8246

11th — Fillmore, 4001 W. Fillmore St. (60624), 744-8386

12th — Monroe, 100 S. Racine Ave. (60607), 744-8396

13th — Wood, 937 N. Wood St. (60622), 744-8350

#### IN FIFTH AREA:

14th — Shakespeare, 2138 N. California Ave. (60647), 744-8290

15th — Austin, 5327 W. Chicago Ave. (60651), 744-8300

16th — Jefferson Park, 5430 W. Gale Ave. (60630), 744-8286

17th — Albany Park, 4461 N. Pulaski Rd. (60630), 744-8347

#### IN SIXTH AREA:

18th — East Chicago, 113 W. Chicago Ave. (60610), 744-8230

19th — Town Hall, 3600 N. Halsted St. (60613), 744-8320

20th — Foster Ave., 1940 W. Foster Ave. (60640), 744-8330

### Area Units: Criminal Investigation Division, Youth Division, Traffic Division, and Special Operations Group

1st — 5101 S. Wentworth Ave. (60609): CID, 744-8384;

YD, 744-8385; TD, 744-8318; and SOG, 744-8298

2nd — 9059 S. Cottage Grove Ave. (60619): CID 744-8275;

YD, 744-8276; TD, 744-8277; and SOG, 744-8270

3rd — 3900 S. California Ave. (60632): CID, 744-8284;

YD, 744-8285; TD, 744-8345

4th — 943 W. Maxwell St. (60608): CID, 744-8255;

YD, 744-8256; TD, 744-8257; and SOG, 744-8250

5th — 2138 N. California Ave. (60647): CID, 744-8364;

YD, 744-8365; and TD, 744-8293

6th — 3801 N. Damen Ave. (60618): CID, 744-8265;

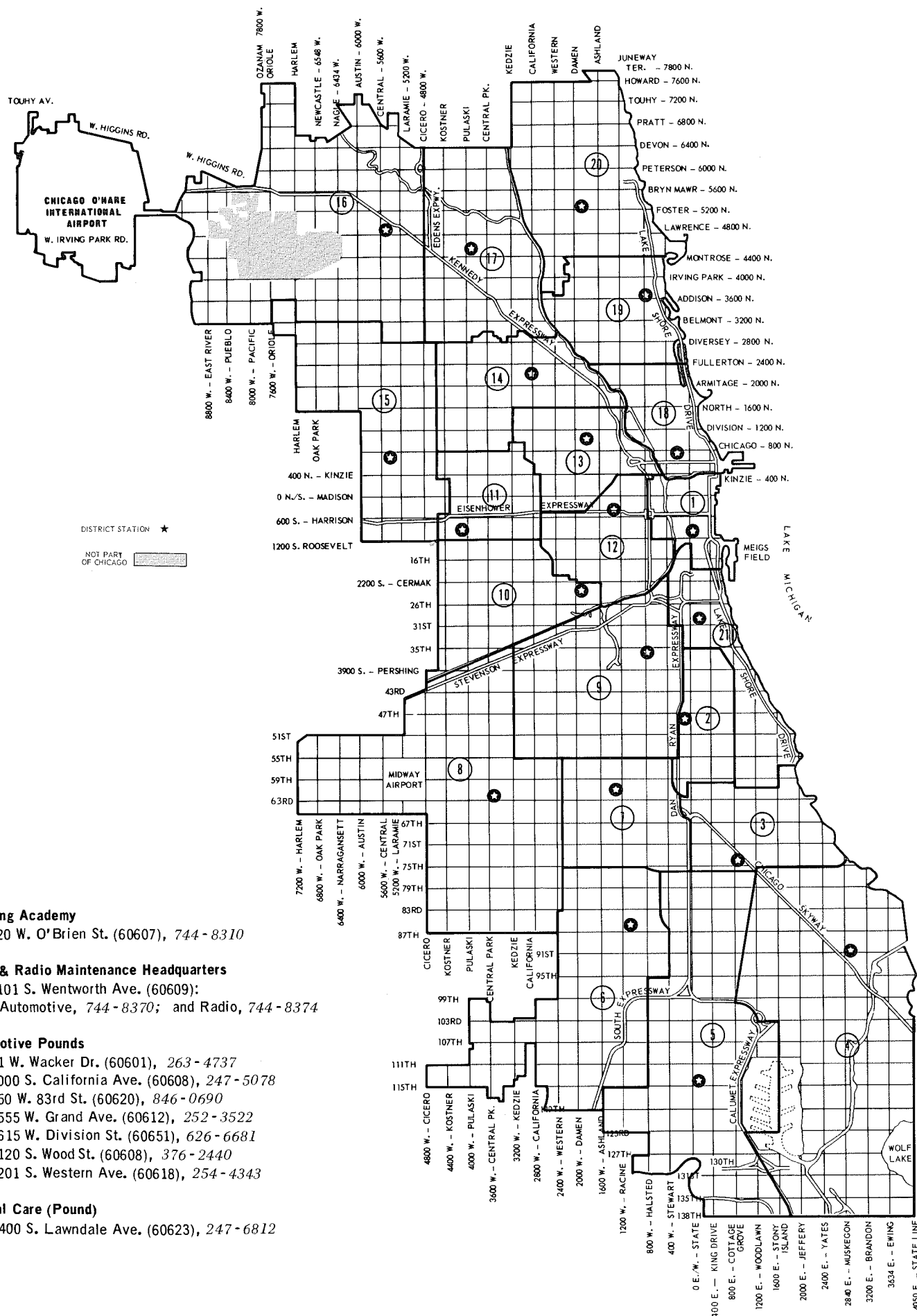
YD, 744-8266; TD, 744-8267; and SOG, 744-8260

### Other Special Operations Group Units

Canine and Marine Sections

1179 S. State St. (60605), 744-8217

Detail Section, 943 W. Maxwell St. (60608), 744-8250



**CHICAGO POLICE DEPARTMENT, 1121 SOUTH STATE ST., CHICAGO, ILLINOIS 60605**