



# **Chicago Police Annual Report 1970**

**RICHARD J. DALEY, MAYOR  
JAMES B. CONLISK, JR., SUPERINTENDENT**

# Table of Contents

Message from the Superintendent.....	page 3
Highlights of 1970 .....	5
Types of Data Presented.....	9

## CRIMES REPORTED

1	Index Crimes by Months .....	10
2	Index Crimes by Periods .....	11
3	Index Crimes by Periods, graph .....	11
4	Index Crimes by Type by Periods—Offenses .....	13
5	Index Crimes by Type by Months — Offenses and Clearances .....	13
6	Murder Offenses by Type.....	14
7	Robbery, Burglary and Theft Offenses by Type .....	15
8	Aggravated Assault Offenses by Type .....	16
9	Auto Theft Offenses by Type .....	16

## ARRESTS AND OTHER ACTIONS

10	All Arrests and Citations, summary with graphs .....	17
----	--	----

## Non-Traffic Actions

11	Non-Traffic Arrests by Age and Sex .....	18
12	Index Crime Arrests of Persons Under 25 by Percentages, graph .....	21
13	Disposition of Juveniles .....	23
14	Missing Persons .....	23
15	Public Information .....	23
16	Community Service Activities.....	23
17	Man-Hours for Special Events.....	24
18	License Activities.....	24
19	Activities of Special Units .....	24

## Traffic Enforcement and Accidents

20	Traffic Accident Causes and Arrests by Type of Violation .....	25
21	Traffic Accidents by Type of Accident.....	25

## STAFF UNIT SERVICES

22	Communications Center.....	27
23	Records Inquiries.....	27
24	Field Inquiries .....	28
25	Evidence and Recovered Property .....	28
26	Identification .....	29
27	Automotive Pounds .....	29
28	Vehicles .....	30
29	Animal Care .....	30
30	Training .....	31

## DEPARTMENT RESOURCES

31	Budget Appropriations .....	32
32	Salary Schedules .....	33
33	Population and Land Areas .....	34
34	Department Locations.....	34
35	Organization of Department, chart .....	Back Cover

*Copies of this Annual Report are available on request from Public and Internal Information Division, Chicago Police Department, 1121 S. State St., Chicago, Illinois 60605 (phone: 744-5570).*





OFFICE OF THE  
SUPERINTENDENT OF POLICE  
CHICAGO

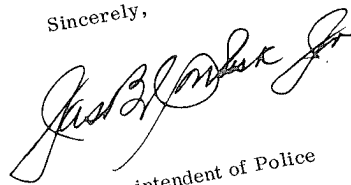
June 1, 1971

Dear Mr. Mayor:

Submitted herewith is the annual report of the Chicago Police Department for the year 1970. This booklet is designed for reference use by governmental agencies at city, state and national levels and by others who may request information from the Department.

We are indebted to you, the City Council and other department heads for continued support of our efforts to give Chicago the finest police department in the nation.

Sincerely,



Superintendent of Police

Honorable Richard J. Daley  
Mayor of Chicago  
City Hall  
Chicago, Illinois 60602

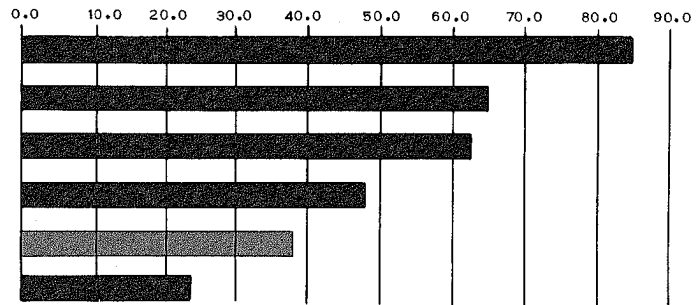


MAYOR RICHARD J. DALEY,  
LEFT, AND SUPERINTENDENT  
JAMES B. CONLISK, JR.

# 1970 Index Crime Rates per 1,000 Population

Cities  
One Million  
and Over

1. Detroit . . . . 84.4
2. New York . . . 65.8
3. Los Angeles . 62.4
4. Houston . . . . 48.5
5. Chicago . . . . 38.0
6. Philadelphia . 23.4



Cities  
250,000  
and Over

Crime Rate Rank	Index Crimes per 1,000 Population	Index Crimes 1970 Total <sup>a</sup>	Population <sup>b</sup>	Population Rank
1. Detroit, Mich. . . . .	84.4	127,630	1,511,482	5
2. Newark, N.J. . . . .	83.1	31,781	382,417	36
3. San Francisco, Calif. . .	79.7	57,130	715,674	13
4. Oakland, Calif. . . . .	79.3	28,712	361,561	38
5. Washington, D.C. . . . .	78.3	59,311	756,510	9
6. St. Louis, Mo. . . . .	73.8	45,915	622,236	18
7. Denver, Colo. . . . .	73.4	37,835	514,678	25
8. Miami, Fla. . . . .	71.3	23,903	334,859	42
9. Baltimore, Md. . . . .	68.5	62,150	905,759	7
10. New York, N.Y. . . . .	65.8	517,716	7,867,760	1
11. Los Angeles, Calif. . .	62.4	175,719	2,816,061	3
12. Portland, Ore. . . . .	60.7	23,274	382,619	35
13. Boston, Mass. . . . .	59.7	38,294	641,071	16
14. Dallas, Texas . . . . .	59.7	50,391	844,401	8
15. New Orleans, La. . . . .	59.6	35,371	593,471	19
16. Cleveland, Ohio . . . .	59.3	44,564	750,903	10
17. Seattle, Wash. . . . .	58.7	31,176	530,831	22
18. Kansas City, Mo. . . . .	57.0	28,995	507,807	26
19. Atlanta, Ga. . . . .	55.0	27,378	496,973	27
20. Pittsburgh, Pa. . . . .	54.6	28,396	520,117	24
21. Minneapolis, Minn. . . .	53.9	23,420	434,300	32
22. Louisville, Ky. . . . .	53.7	19,413	361,472	39
23. Phoenix, Ariz. . . . .	50.6	29,483	581,562	20
24. Tampa, Fla. . . . .	50.3	13,986	277,767	50
25. Honolulu, Hawaii . . . .	49.4	16,056	324,871	44
26. Houston, Texas . . . . .	48.5	59,883	1,232,802	6
27. St. Paul, Minn. . . . .	48.5	15,050	309,980	46
28. Akron, Ohio . . . . .	48.1	13,252	275,425	52
29. Columbus, Ohio . . . . .	47.7	25,784	539,677	21
30. Jacksonville, Fla. . . . .	47.6	25,223	528,865	23
31. Sacramento, Calif. . . .	46.0	11,708	254,413	54
32. Birmingham, Ala. . . . .	44.3	13,362	300,910	48
33. Long Beach, Calif. . . .	43.7	15,695	358,633	40
34. Norfolk, Va. . . . .	43.5	13,402	307,951	47
35. Rochester, N.Y. . . . .	42.0	12,442	296,233	49
36. San Antonio, Texas. . . .	41.6	27,221	654,153	15
37. Wichita, Kans. . . . .	40.0	11,097	276,554	51
38. Fort Worth, Texas. . . .	39.8	15,652	393,476	33
39. Nashville, Tenn. . . . .	39.5	17,703	447,877	30
40. Buffalo, N.Y. . . . .	39.4	18,284	462,768	28
41. Cincinnati, Ohio . . . . .	38.3	17,395	452,524	29
42. Tulsa, Okla. . . . .	38.1	12,667	331,638	43
43. Chicago, Ill. . . . .	38.0	128,017	3,366,957	2
44. Memphis, Tenn. . . . .	34.6	21,614	623,530	17
45. Omaha, Neb. . . . .	34.4	11,962	347,328	41
46. Indianapolis, Ind. . . . .	33.9	25,277	744,624	11
47. San Diego, Calif. . . . .	33.3	23,232	696,769	14
48. San Jose, Calif. . . . .	32.4	14,492	445,779	31
49. Toledo, Ohio . . . . .	32.1	12,330	383,818	34
50. Oklahoma City, Okla. . .	31.1	11,386	366,481	37
51. Jersey City, N.J. . . . .	29.4	7,690	260,545	53
52. El Paso, Texas . . . . .	28.9	9,333	322,261	45
53. Milwaukee, Wis. . . . .	28.1	20,188	717,099	12
54. Austin, Texas . . . . .	26.9	6,794	251,808	55
55. Philadelphia, Pa. . . . .	23.4	45,734	1,948,609	4

<sup>a</sup> 1970 FBI Preliminary Annual Release, 29 March 1971.

<sup>b</sup> U.S. Bureau of Census, Final Census Report as published in U.S. News and World Report, 22 February 1971.



# Highlights of 1970

Index crimes\* reported in Chicago during 1970 decreased 0.4% from the previous year. Chicago is the only one among cities one million or more to experience an over-all decrease.

According to the FBI, Chicago's per capita rate for index crimes is the second lowest among the nation's six largest cities; among the 55 American cities of 250,000 or more Chicago ranks 43rd (adjoining charts).

The number of traffic fatalities decreased to 317 from 357 in 1969. The fatality rate per 10,000 registered vehicles was 3.0, a decrease from 3.2 in the previous year.

## Reorganization

In accordance with a study made at the request of the Superintendent by the International Association of Chiefs of Police extensive reorganization of the Department was undertaken. The results of this reorganization are portrayed on the back cover.

## Community Service Aides

Early in 1970 a radically new kind of police service was made available to some 327,000 inner-city citizens. As a participating agency in the five-year Model Cities Program, the Department established the Community Service Aides Project in the four target areas of Uptown, North Lawndale, Grand Boulevard-North Kenwood-Oakland, and Woodlawn.

Headquartered in six storefront locations, known as community service centers, are 495 additional police personnel. Of these, 422 are community service aides, both men and women, and all of them residents of the target areas in which they work.

\* The seven major crimes designated by the FBI as "index" crimes for use in making comparisons among various law enforcement jurisdictions are: Murder (including non-negligent homicide); Forcible Rape; Aggravated Assault; Robbery; Burglary; Theft, \$50 & Over; and Auto Theft. Data on other cities from FBI Preliminary Annual Release of 29 March 1971.

† Figures shown in parentheses refer to tables and charts that follow.

The aides work in distinctive green uniforms under the supervision of sworn personnel. Most of the aides are assigned to foot patrol of area streets. A limited number work in the community service centers, where they act as receptionists and assist in clerical duties. Aides are also given special assignments relating to recreational and educational programs for citizens.

Presence of the aides on the streets helps discourage the commission of crimes and enables policemen to spend more time on crime prevention. Citizens recognize that police help is readily available and learn to participate actively in the objectives of law enforcement. Citizens who are reluctant to report problems to policemen welcome the opportunity to talk to fellow-residents.

A major aspect of aides' duties is to help improve the quality of life in the community. While on patrol, aides look for and report on adverse conditions such as abandoned cars and unprotected vacant buildings. The aides also demonstrate willingness to hear citizen complaints and, in nonpolice matters, provide referrals to appropriate agencies.

The Department's project provides benefits that go far beyond the enlargement and improvement of police services. It also demonstrates to the community that it is possible for residents to get responsible jobs at good pay, continue their education, and advance to better positions.

The aide receives careful counseling throughout his service on the project. To help him at work, he receives both pre-service and in-service job training, each adjusted to meet his educational needs. More important, the aide is encouraged to prepare himself for advancement. He is allowed up to nine hours a week with pay to attend school.

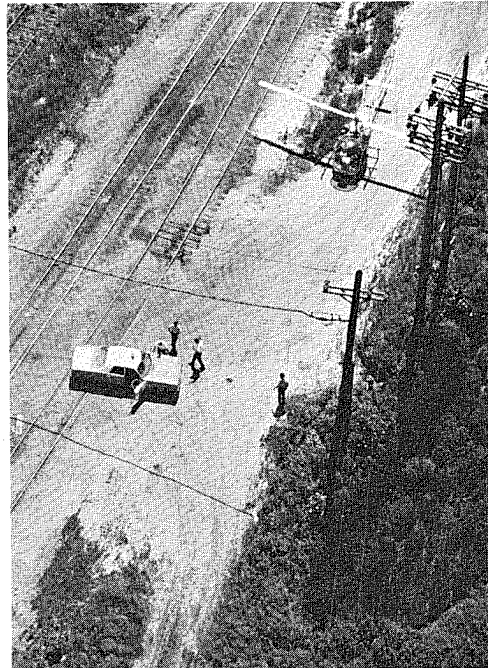
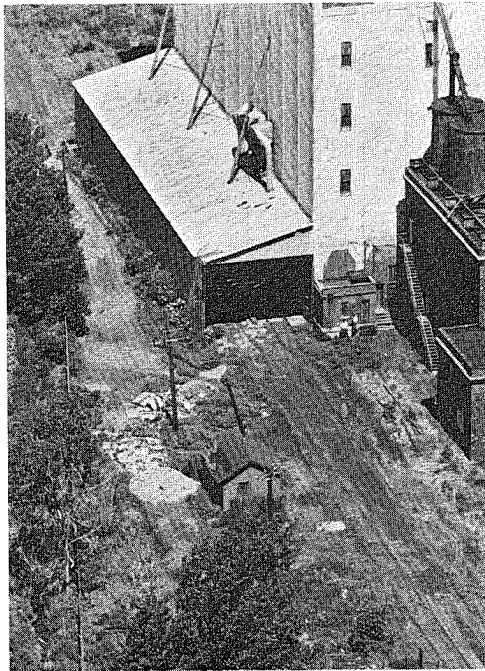
## High School Visits

Officers completed the first academic year of the high school equivalent to the Officer Friendly program. A series of lectures on ten consecutive days was presented to 15,950 students on topics that included drug abuse, techniques of self protection and the laws of arrest.

A total of 224 youngsters were given summer employment with Department units under auspices of the National Youth Corps; 20 remained after 1 September in a full-time work-training program.



Logical choice for spotting criminal activities at inaccessible locations. Below, left: Helicopter sights two suspects leaving a grain elevator after the alarm went off. Right: A beat car arrives to make the arrest.





## HIGHLIGHTS, CONTINUED

### Helicopter Patrol

The helicopter section of the Special Operations Group logged 2,604 flying hours. As a result of action taken by helicopter personnel, ground units effected 56 arrests for burglary, 10 for auto theft, 7 for robbery and 78 for other offenses.

### Vertical Patrol

Patrol within Cabrini-Green public housing units was undertaken at year's end. Prior to their assignment officers were given three days of special in-service training for carefully planned "random" patrol of elevators, stairwells, balconies and community and laundry rooms.

### New Area-District Headquarters

The First Area-Second District headquarters complex was dedicated 16 March. Included are two court rooms for the Municipal Court of Chicago in the main building, a two-story facility for automotive and radio maintenance, a parking lot for 550 vehicles, and a 22,000-square-foot heliport.

Among the many novel features are: an auditorium which can be used for police-community workshop meetings; air conditioning throughout the headquarters building; a closed-circuit television monitoring system in the detention area; offices for representatives of the States Attorney, the Public Defender and the Probation Department; and, for police personnel, locker and shower rooms and a canteen.

### Personal Radios

Portable radios for Patrol Division officers and satellite receivers to pick up and amplify signals of their low-power transmitters were established throughout the 1st, 18th and 19th districts, and radios in squad cars were removed. Plans were made to implement use of personal radios by district personnel throughout the city in 1971. Mid-1970, Department Bell Telephone lines under the number WA 2-4747 were brought into the City's 744-4000 Centrex system.

Installation of rapid retrieval equipment now makes it possible to supply field personnel with microfilmed data on city vehicle registrations and gun registrations on a 24-hour basis.

Money received by the city from the auction, scrap, towing and storage of abandoned vehicles was \$1,900,000. Auctions of unclaimed and abandoned vehicles are now open to the general public rather than only to licensed parts and junk dealers. These auctions, which are open for two days, bring greater profits to the City. Issuance of title and junking certificates was simplified, thereby reducing sizable costs. Total yield from property taken was \$470,000.

### Training

Heavy demands were placed on the limited facilities of the Academy. In its second year of 31-week training, the number of male Chicago recruits was 1,136. A closed circuit television system was set up, making it possible to televise prerecorded programs and to have simultaneous showings in two or more classrooms.

At year's end, plans were made to provide executive development training for all command officers of captain's rank and higher. In addition to receiving community service training at the Academy, recruits will also receive on-the-job training in this area during their probationary period.

### Resources

The 1970 budget totaled over \$190 million, of which over \$180 million was spent for salaries.

The year 1970 brought a large number of promotions: 175 sergeants, 74 lieutenants and 24 captains.

In 1970 the Department mourned the loss of nine police officers — a lieutenant, a sergeant and seven patrolmen — slain in line of duty. All were killed by firearms. In addition, 29 officers were shot in line of duty.

## STATISTICAL HIGHLIGHTS

Index Crimes Reported . . . . .	127,917
Murder Reported . . . . .	810
Rape Reported . . . . .	1,405
Aggravated Assault Reported . . . . .	11,667
Robbery Reported . . . . .	23,198
Burglary Reported . . . . .	35,190
Theft \$50 & Over Reported . . . . .	16,479
Auto Theft Reported . . . . .	39,268
Murder by Handgun Reported . . . . .	409
Index Crime Arrests, All Ages . . . . .	49,293
Index Crime Arrests, Under 18 . . . . .	21,563
Non-Traffic Arrests, All Ages . . . . .	264,590
Non-Traffic Arrests, Under 18 . . . . .	58,028
Civil Disturbances, Man-Hours . . . . .	27,904
Traffic Citations, All . . . . .	3,332,059
Traffic Citations, Hazardous . . . . .	793,994
Communications Center, Calls Received <sup>a</sup> . . . . .	3,796,710
Stolen Cars, Records Searched <sup>a</sup> . . . . .	666,936
Wanted Persons, Records Searched <sup>a</sup> . . . . .	408,558
Arrestee Fingerprints, Compared <sup>a</sup> . . . . .	118,666
Arrestee Fingerprints, Identical <sup>a</sup> . . . . .	71,887
Latent Fingerprints Compared <sup>a</sup> . . . . .	21,615
Latent Fingerprints Identical <sup>a</sup> . . . . .	1,082
Abandoned Vehicles Towed <sup>a</sup> . . . . .	49,897
Budget Appropriations . . . . .	\$190,992,514.00
Patrolman Salary, Max. Annual . . . . .	12,120.00 <sup>b</sup>
Sworn Personnel . . . . .	12,678
All Personnel . . . . .	15,955

<sup>a</sup> 13-period years. <sup>b</sup> Not included: 2% longevity increase instituted 1970.



## TYPES OF DATA PRESENTED

The tabulations and graphs that follow give quantitative data on crimes reported, on arrests and other results of members' performance, and on resources made available to the Department.

Figures for crimes reported conform to FBI practice in its Uniform Crime Reports. Data on Murder, Rape and Aggravated Assault reflect the number of victims when two or more are involved in an accident. Data on Auto Theft show the number of cars stolen. Data on Robbery, Burglary and Theft - \$50 and Over show the number of incidents. In the data on arrests, all figures reflect the number of offenders apprehended.

The base of reporting for the data is identified as either the 12-month calendar year or the 13-period Chicago Police year, which consists of 13 periods each with 28 days. Differences in resultant

figures may be seen by comparing Tables 1 and 2 and Tables 4 and 5.

### 12-MONTH YEARS

The 12-month calendar year (365 days, 1 January through 31 December) is used where the data relate to FBI, City of Chicago and certain other reports.

### 13-PERIOD YEARS

The 13-period year is used so that valid comparisons can be made according to workload. Each of the 13 periods has 28 days and each of the four weeks in a period begins on the same day of the week. As a result, each week and period, with the same number of days, has the same number of Fridays, Saturdays and Sundays, when peak workloads occur.

## 1. Index Crimes by Months

CALENDAR YEAR, 1 JANUARY THROUGH 31 DECEMBER\*

January.....	11,072
February.....	9,388
March.....	9,572
April.....	9,875
May.....	10,534
June.....	10,735
July.....	8,997
August.....	14,140
September.....	11,019
October.....	11,224
November.....	10,609
December.....	10,852
TOTAL.....	127,917

\* For 13-period data see Tables 2 and 3.

At O'Hare International Airport we welcome as well as "Serve and Protect."





## 2. Index Crimes by Periods

13-PERIOD YEAR\*

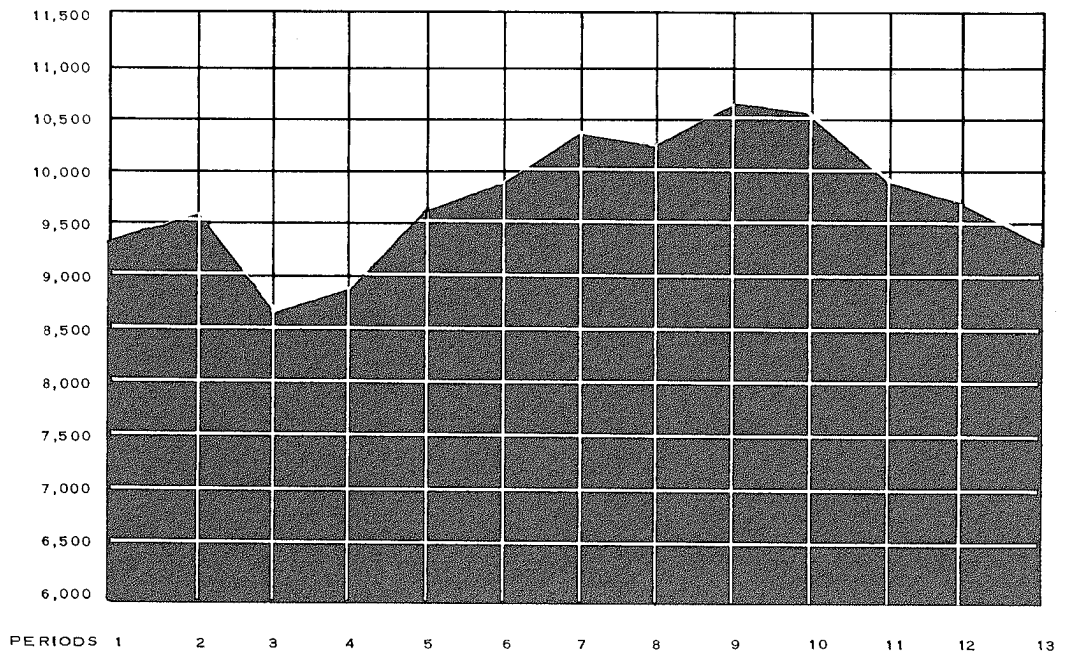
1st Period.....	9,333
2nd Period .....	9,517
3rd Period.....	8,691
4th Period.....	8,957
5th Period.....	9,611
6th Period.....	9,970
7th Period.....	10,414
8th Period.....	10,282
9th Period.....	10,595
10th Period.....	10,098
11th Period.....	9,891
12th Period.....	9,718
13th Period.....	9,492
<b>TOTAL .....</b>	<b>126,569</b>

\*Each period 28 days. 8 Jan. 1970 through 6 Jan. 1971. See also graph, Table 3.  
For 12-month data, see Table 1.

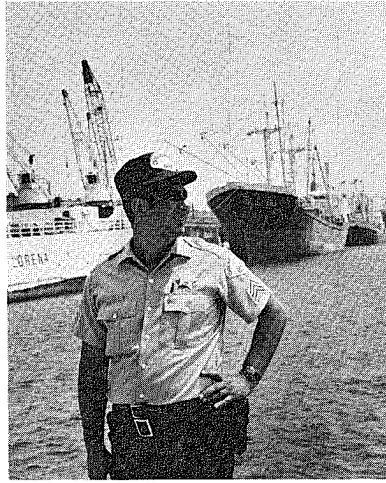
## 3. Index Crimes by Periods

### 1970 PERIODS Ending Dates

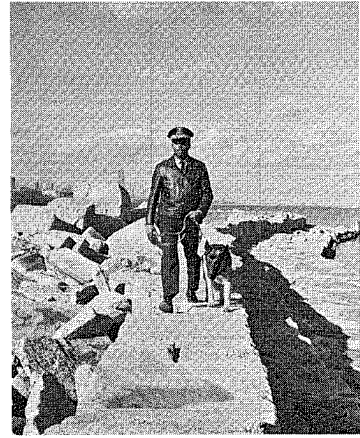
1st	4 February
2nd	4 March
3rd	1 April
4th	29 April
5th	27 May
6th	24 June
7th	22 July
8th	19 August
9th	16 September
10th	14 October
11th	11 November
12th	9 December
13th	6 January



# ON PATROL . . .



At Chicago's seaport . . .



Along the lakefront . . .



In Chicago's famed South Water Market . . .



After a fire . . .



And at a drinking fountain, too.



## 4. Index Crimes by Type — Offenses

1970

13-PERIOD YEAR\*

	Number
Murder .....	796
Rape .....	1,394
Aggravated Assault .....	11,618
Robbery .....	23,001
Burglary .....	34,912
Theft, \$50 & Over .....	16,163
Auto Theft .....	38,685
TOTAL INDEX .....	126,569

\*Each period 28 days. 8 Jan. through 6 Jan. 1971.

## 5. Index Crimes by Type — Offenses & Clearances

CALENDAR YEAR, 1 JANUARY THROUGH 31 DECEMBER\*

	OFFENSES	CLEARANCES <sup>a</sup>	
	Number	Number	Percent Cleared
Murder .....	810	727	90.0
Rape .....	1,405	777	55.3
Aggravated Assault .....	11,667	6,585	56.4
Robbery .....	23,198	9,241	39.8
Burglary .....	35,190	9,732	27.7
Theft, \$50 & Over .....	16,479	4,013	24.4
Auto Theft .....	39,268	7,785	19.8
TOTAL INDEX .....	127,917	38,860	30.4

\* For 13-period data, see Table 4.

<sup>a</sup> Solution of a crime. One arrest, death or other event may result in one or more clearances. Clearances shown here relate only to offenses that occurred during the same year.

## 6. Murder Offenses by Type

CALENDAR YEAR, 1 JANUARY THROUGH 31 DECEMBER

Number Killed ..... 810

### Weapons Used

Firearms	409
Handguns .....	70
Long Guns .....	49
Unknown Type .....	152
Knives .....	130
Other Object or Substance .....	72
Hands or Feet Only .....	

### Motivation

Personal Dispute .....	436
Robbery, Burglary, etc. ....	148
Sex-Rape, Perversion, etc. ....	19
Other .....	101
Undetermined .....	106

### Relationship to Victim

Marriage (Legal or Common-Law) .....	96
Other Familial .....	37
Friends (Romantic, Neighbor, etc.) .....	169
Other Acquaintance, Including Business .....	179
No Relationship .....	232
Relationship Not Established .....	97

### Location

Indoor	
Residence .....	343
Place of Entertainment .....	59
Other .....	49
Outdoor	
Residence Area .....	33
Street, Alley, Park, Open Lot .....	301
Other .....	25

### Ages of Victims and Offenders

	<u>Victims</u>	<u>Offenders</u>
0-5 .....	17	0
6-10 .....	3	0
11-15 .....	29	57
16-20 .....	130	317
21-25 .....	122	215
26-30 .....	87	102
31-35 .....	79	93
36-40 .....	85	53
41-45 .....	59	53
46-50 .....	60	28
51-55 .....	51	21
56-60 .....	35	18
61 & Over .....	53	18
Unknown .....	0	105
TOTAL .....	810	1,080

## 7. Robbery, Burglary and Theft Offenses by Type

CALENDAR YEAR, 1 JANUARY THROUGH 31 DECEMBER

	Number of Offenses	Value of Property Stolen
<b>Robbery</b>		
Streets, Alleys, etc.....	13,156	\$ 1,074,936
Residential.....	2,484	310,184
Chain Store.....	393	62,279
Gas or Service Station.....	634	66,148
Bank.....	34	145,460
Other Commercial .....	2,214	462,372
Miscellaneous.....	4,283	528,015
<b>TOTAL .....</b>	<b>23,198</b>	<b>\$ 2,649,394</b>
<b>Burglary</b>		
Residential		
Night .....	4,895	\$ 1,637,544
Day .....	14,172	4,270,675
Unknown.....	3,647	1,384,663
Non-Residential		
Night .....	6,933	2,687,490
Day .....	1,794	660,013
Unknown.....	3,749	1,765,918
<b>TOTAL .....</b>	<b>35,190</b>	<b>\$12,406,303</b>
<b>Theft <sup>a</sup></b>		
Purse Snatching.....	8,650	\$ 316,216
Bicycles .....	11,176	239,463
Auto Parts & Accessories .....	24,173	659,892
From Auto - Other.....	15,108	1,783,903
Pocket Picking .....	2,367	133,234
Shoplifting .....	7,411	208,889
From Coin-Operated Machines (Parking Meter, etc.)	518	15,859
Other from Building .....	18,207	2,541,460
All Other .....	14,475	2,634,985
<b>TOTAL .....</b>	<b>102,085</b>	<b>\$ 8,533,901</b>

<sup>a</sup> All thefts. Offenses \$50 & Over: 16,479 with property valued at \$7,186,901.

## 8. Aggravated Assault Offenses by Type

CALENDAR YEAR, 1 JANUARY THROUGH 31 DECEMBER

Gun .....	3,665
Knife or Cutting Instrument .....	4,713
Other Dangerous Weapon .....	2,446
Hands, Fists, Feet, etc. (Aggravated) .....	843
TOTAL .....	11,667

## 9. Auto Theft Offenses by Type

13-PERIOD YEAR \*

### Thefts

Including Attempts .....	38,685
Not Including Attempts .....	36,803

### Clearances

Number .....	8,121
Percent Cleared .....	21.0

### Recoveries

Motor Vehicles Stolen in Chicago	
Recovered Within City .....	30,089
Recovered Outside City .....	1,870
TOTAL .....	31,959
Percent Recovered .....	86.8
Motor Vehicles Stolen Outside Chicago and Recovered Within City .....	1,611

\* Each period 28 days. 8 Jan. 1970 through 6 Jan. 1971.



# ARRESTS AND OTHER ACTIONS

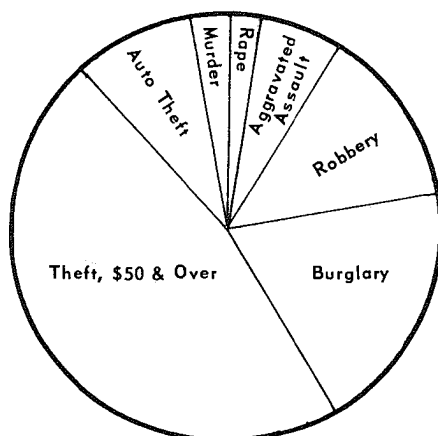
## 10. All Arrests and Citations

CALENDAR YEAR, 1 JANUARY THROUGH 31 DECEMBER\*

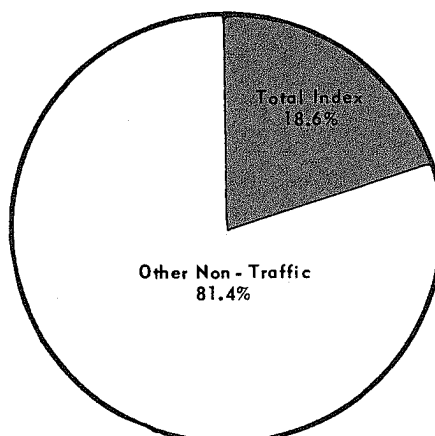
	Number	Percent
<b>Non-Traffic Violations</b>		
Index Crimes		
Murder .....	1,153	2.3
Rape .....	806	1.6
Aggravated Assault .....	3,690	7.5
Robbery .....	6,845	13.9
Burglary .....	9,275	18.8
Theft, \$50 & Over .....	23,365	47.4
Auto Theft .....	4,162	8.5
TOTAL INDEX .....	49,296	100.0
Other Non-Traffic .....	216,148	....
TOTAL NON-TRAFFIC .....	265,444	....
<b>Traffic Violations</b>		
Hazardous .....	793,994	23.8
Non-Hazardous .....	2,539,065	76.2
TOTAL TRAFFIC .....	3,332,059	100.0

\* See Table 11 for further breakdown.

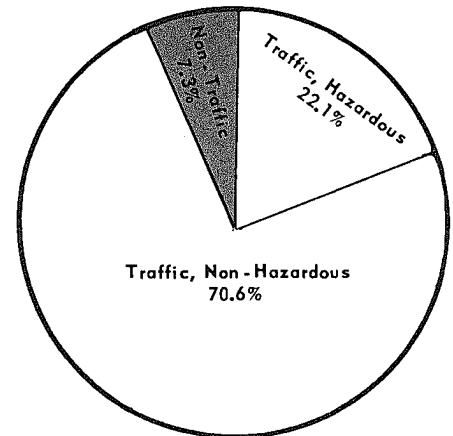
Index Crime Arrests



Non-Traffic Arrests



All Arrests & Citations



# Non-Traffic Actions

## 11. Arrests of Persons by Age and Sex

CALENDAR YEAR, 1 JANUARY THROUGH 31 DECEMBER

CLASSIFICATION OF OFFENSES	SEX	AGES UNDER 18	AGES 18 TO 20	AGES 21 TO 24	AGES 25 TO 44	AGES 45 & OVER	TOTAL
01a Murder & Non-Negligent Manslaughter .....	M	246	236	181	272	83	1,018
	F	10	14	24	69	18	135
01b Manslaughter by Negligence .....	M	12	3	1	14	2	32
	F	...	1	...	1	...	2
02 Forcible Rape .....	M	303	184	135	163	21	806
	F	...	...	...	...	...	...
03 Robbery .....	M	2,569	1,572	1,178	1,133	81	6,533
	F	139	54	61	56	2	312
04 Aggravated Assault (Ret. B-4-a-d) .....	M	986	448	434	988	356	3,212
	F	165	41	38	182	52	478
05 Burglary — Breaking or Entering .....	M	4,585	1,568	1,080	1,591	179	9,003
	F	140	38	47	43	4	272
06 Larceny — Theft (Except Auto Theft) .....	M	9,236	2,736	2,303	4,149	734	19,158
	F	2,233	554	465	780	175	4,207
07 Auto Theft .....	M	928	1,196	757	1,020	128	4,029
	F	23	23	28	53	6	133
08 Other Assaults (Return B-4e) .....	M	2,753	1,399	1,541	3,451	853	9,997
	F	694	121	152	442	116	1,525
09 Arson .....	M	130	19	26	34	5	214
	F	2	1	2	3	2	10
10 Forgery & Counterfeiting .....	M	4	7	10	36	7	64
	F	...	3	3	5	...	11
11 Fraud .....	M	406	263	330	695	125	1,819
	F	54	84	117	143	30	428
12 Embezzlement .....	M	...	...	...	...	...	...
	F	...	...	1	...	...	1
13 Stolen Property: Buying, Receiving, Possessing..	M	509	54	66	138	42	809
	F	28	6	6	12	3	55
14 Vandalism .....	M	2,775	435	354	627	142	4,333
	F	149	21	24	102	25	321
15 Weapons: Carrying, Possessing, etc. ....	M	1,526	1,090	1,241	2,846	1,051	7,754
	F	53	43	78	224	51	449
16 Prostitution & Commercialized Vice .....	M	34	135	279	936	536	1,920
	F	33	479	919	826	77	2,334
17 Sex Offenses (Except Forcible Rape & Prostitution	M	367	310	305	630	178	1,790
	F	249	35	30	156	11	381

# Arrests of Persons (Continued)

CALENDAR YEAR, 1 JANUARY THROUGH 31 DECEMBER

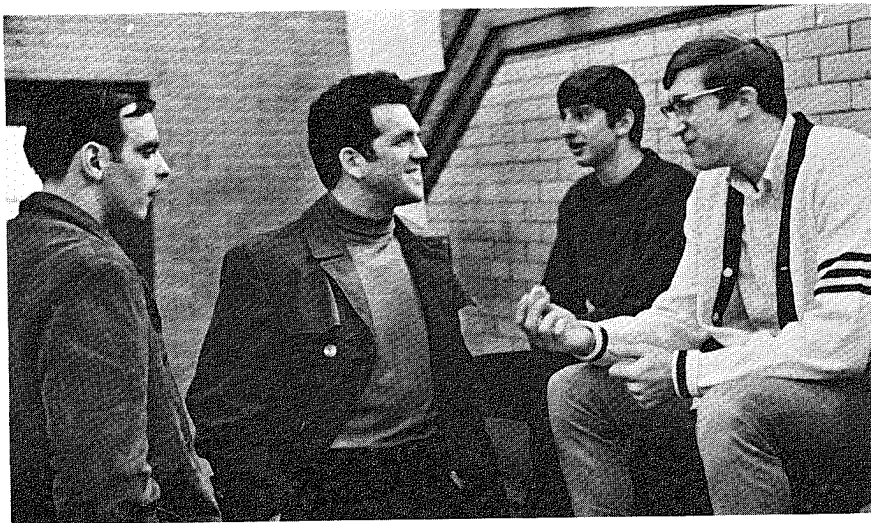
CLASSIFICATION OF OFFENSES	SEX	AGES UNDER 18	AGES 18 TO 20	AGES 21 TO 24	AGES 25 TO 44	AGES 45 & OVER	TOTAL
18 NARCOTIC DRUG LAWS, TOTAL .....	M	1,611	2,685	2,708	2,860	296	10,160
	F	226	331	327	401	31	1,316
18a Opium or Cocaine & Their Derivatives <sup>a</sup> .....	M	151	400	589	1,117	135	2,392
	F	17	69	103	200	14	403
18b Marijuana .....	M	783	1,830	1,711	1,254	99	5,677
	F	96	183	179	135	10	603
18c Synthetic Narcotics <sup>b</sup> .....	M	16	20	11	19	4	70
	F	1	2	3	7	2	15
18d Other — Dangerous Non-Narcotic Drugs <sup>c</sup> .....	M	661	435	397	470	58	2,021
	F	112	77	42	59	5	295
19 GAMBLING, TOTAL .....	M	207	379	719	3,180	2,514	6,999
	F	...	9	33	224	404	670
19a Bookmaking (Horse and Sportbook) .....	M	6	6	10	54	99	175
	F	...	...	...	5	3	8
19b Numbers & Lottery .....	M	5	9	25	201	352	592
	F	...	1	5	56	189	251
19c All Other Gambling .....	M	196	364	684	2,925	2,063	6,232
	F	...	8	28	163	212	411
20 Offenses Against Family & Children .....	M	79	196	326	993	192	1,786
	F	32	38	57	126	31	284
21 Driving Under the Influence .....	M	60	435	1,055	5,413	2,729	9,692
	F	1	5	36	219	69	330
22 Liquor Laws .....	M	261	293	62	238	149	1,003
	F	35	33	27	51	21	167
23 Drunkenness .....	M	775	1,265	1,364	12,188	11,665	27,257
	F	96	118	81	364	204	863
24 Disorderly Conduct .....	M	9,207	10,249	10,636	35,531	22,129	87,758
	F	1,118	1,346	1,971	3,292	1,251	8,978
25 Vagrancy .....	M	44	37	101	676	705	1,563
	F	1	3	4	17	23	48
26 All Other Offenses (Except Traffic) .....	M	2,491	1,052	1,176	2,949	1,353	9,021
	F	405	746	1,526	1,164	125	3,966
27 Suspicion .....	M	...	...	...	...	...	...
	F	...	...	...	...	...	...
28 Curfew & Loitering .....	M	861	...	...	...	...	861
	F	14	...	...	...	...	14
29 Run-Aways .....	M	3,618	...	...	...	...	3,618
	F	5,545	...	...	...	...	5,545
TOTAL All Offenses	M	46,583	28,246	28,368	82,657	46,255	232,316
	F	11,445	4,147	6,057	8,955	2,731	33,128
		58,028	32,393	34,425	91,612	48,986	265,444

<sup>a</sup> Morphine, heroin, codeine. <sup>b</sup> Manufactured narcotics which can cause true drug addiction (demerol, methadones). <sup>c</sup> Barbiturates, benzedrine.

## SERVING YOUTH

Right: A youth officer checks out a youngsters' hangout.

Below: A high school security officer builds understanding.

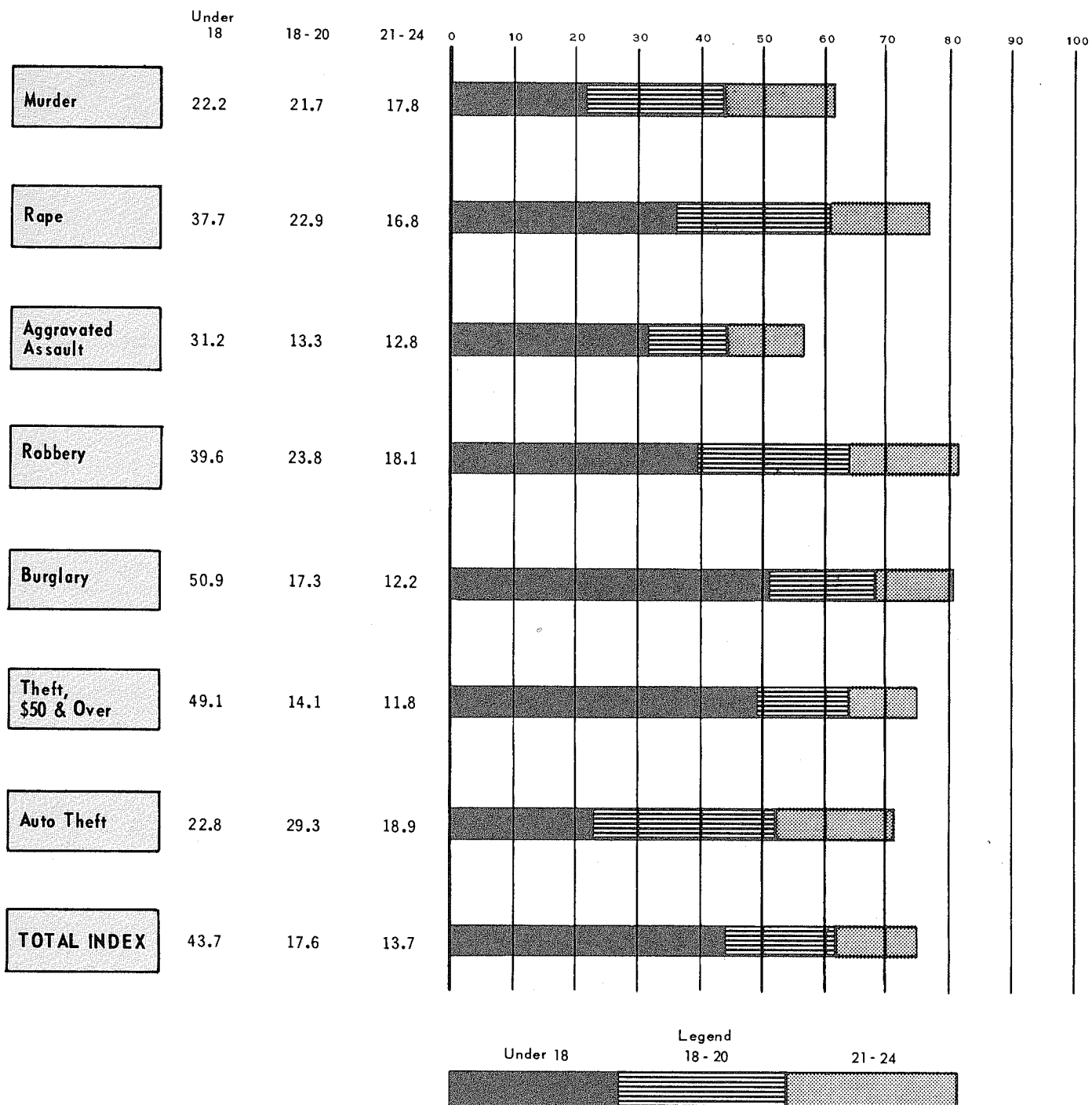


Schoolchildren are safely guided across a main thoroughfare.



## 12. Index Crime Arrests of Persons Under 25 by Percentages

CALENDAR YEAR 1 JANUARY THROUGH 31 DECEMBER



# COMMUNITY SERVICE



A Community Service aide receives instructions from her supervisor.



Busy classroom in a Community Service Center.



Officer Friendly participates in "show and tell."



Loading up for a field trip.

## 13. Disposition of Juveniles

13—PERIOD YEAR\*

### Processed Within Department

School Absentees .....	37,934
Curfew Violators (Notice to Parents) .....	80,252
Community Adjustments (Minor Violations — Interview & Formal Release to Parents) .....	3,421
Referred to Youth Service Agency .....	28,698
Referred to Other Police Agency .....	115
Referred to Juvenile Court of Cook County .....	18,610
Referred to Criminal Court .....	89

\* Each period 28 days, 8 Jan. 1970 through 6 Jan. 1971. Not including traffic, dependency and neglect cases. Also not included: 6,129 Juvenile Information Reports (information obtained from non-offenders).

## 14. Missing Persons

CALENDAR YEAR, 1 JANUARY THROUGH 31 DECEMBER\*

### Juvenile Males (Under 17)

Reported .....	7,185
Located .....	7,130

### Juvenile Females (Under 18)

Reported .....	9,065
Located .....	8,917

### Adult Males

Reported .....	2,561
Located .....	2,526

### Adult Females

Reported .....	1,787
Located .....	1,777

\* Case reports filed. Does not include runaways (see Table 11).

## 15. Public Information

CALENDAR YEAR, 1 JANUARY THROUGH 31 DECEMBER

Speaking Engagements Arranged . 1,448

### Mobile Exhibit Cruiser

Engagements .....	33
Persons Attending .....	289,820

### Publications, Copies Distributed

Star Magazine, Monthly. ....	16,000
Community Workshop Reporter, Monthly. ....	4,500
Pamphlets and Booklets. ....	514,750

## 16. Community Service Activities

CALENDAR YEAR, 1 JANUARY THROUGH 31 DECEMBER

Police-Community Workshops, Attendance <sup>a</sup> .....	52,283
Other Police-Community Meetings .....	27,140
Citizen Complaints Handled <sup>b</sup> .....	2,100
Officer Friendly Visits <sup>c</sup> .....	
Visits Made .....	36,040
Children Visited .....	569,689
Youth Activities, Children Involved <sup>d</sup> .....	234,445
Human Relations Activities .....	
Investigations Made .....	387
Meetings Attended .....	544

<sup>a</sup> At least one meeting per month in each district (except Central); Steering Committee meetings not included.

<sup>b</sup> Neighborhood problems investigated by district Community Service personnel.

<sup>c</sup> School year ending June 1970. Series of visits to classrooms, kindergarten through 8th grade. Not included here: 925 visits to 15,950 high school students in school year ending June 1970.

<sup>d</sup> Participation by district personnel in Mayor's "Reach-Out" program on a year-round basis. Included tours, field trips, sports events, etc. for ages 8 through 18 and employment referrals for high school youth and young adults.

## 17. Man-Hours for Special Events

13-PERIOD YEAR\*

Parades . . . . .	30,345
Expositions, Fairs, etc. . . . .	47,550
Sporting Events . . . . .	66,491
Security for Visiting Dignitaries. .	159,835
Labor Controversies . . . . .	18,619
Demonstrations <sup>a</sup> . . . . .	80,768
Disturbances . . . . .	27,904 <sup>b</sup>
<b>TOTAL</b> . . . . .	<b>431,512</b>

\* Each period 28 days. 8 Jan. 1970 through 6 Jan. 1971.

<sup>a</sup> Includes numerous demonstrations that led to minor disturbances of brief duration. Also includes 5,807 hours due to disturbances at Grant Park Rock Festival 27 July.

<sup>b</sup> Disturbances relating to Contract Buyers League evictions.

## 18. License Activities

13-PERIOD YEAR\*

<b>Applications Processed</b>	
General Business . . . . .	8,534
Chauffeur . . . . .	8,289
<b>License Investigations Conducted</b>	
Liquor . . . . .	863
Other Than Liquor. . . . .	421

\* Each period 28 days. 8 Jan. 1970 through 6 Jan. 1971.

## 19. Activities of Special Units

13-PERIOD YEAR\*

### Marine

Incidents . . . . .	841
Tows . . . . .	374
Arrests . . . . .	5

### Canine

Arrests . . . . .	2,224
Building & Field Searches . . .	1,294
Arrest Assists . . . . .	3,518

**C.T.A. Arrests** . . . . . 18,816

**Helicopter, Resultant Arrests<sup>a</sup>** . . . 151

### Tactical

Missions . . . . .	98
Arrests . . . . .	54,902

**Evidence Technician Calls** . . . . . 45,004

### Labor Relations

Investigations . . . . .	10,589
Strikes . . . . .	128

\* Each period 28 days. 8 Jan. 1970 through 6 Jan. 1971.

<sup>a</sup> Arrests made possible by participation of helicopter units.



# Traffic Enforcement and Accidents

## 20. Traffic Accident Causes and Arrests by Type of Violation

CALENDAR YEAR, 1 JANUARY THROUGH 31 DECEMBER \*

	NUMBER OF CAUSES	PERCENT OF TOTAL	NUMBER OF CITATIONS	PERCENT OF TOTAL
Following Too Closely .....	31,816	17.7	26,530	3.3
Vehicle Right-of-Way .....	26,199	14.5	8,974	1.1
Speeding .....	12,525	6.9	158,851	20.0
Improper Turning .....	7,766	4.3	174,734	22.1
Driving Wrong Side of Road .....	5,036	2.8	11,488	1.5
Disobeying Signs & Signals .....	5,709	3.2	138,944	17.5
Disregarding Pedestrian Right-of-Way .....	3,556	2.0	5,867	0.7
Driving Intoxicated .....	6,215	3.4	13,447	1.7
Improper Passing .....	3,693	2.0	6,524	0.8
Disregarding Through Street Stop .....	1,115	0.7	50,599	6.3
Vision Obstruction .....	...	...	2,923	0.3
Improper Start from Parked .....	...	...	4,719	0.6
Improper Operator's Signals .....	...	...	24,856	3.2
Obstructing Traffic .....	...	...	12,576	1.6
Reckless Driving .....	...	...	37,378	4.7
Driving Outside Authorized Lanes .....	...	...	42,944	5.4
Other Driving Violations .....	76,415	42.5	72,640	9.2
TOTAL .....	180,045	100.0	793,994	100.0

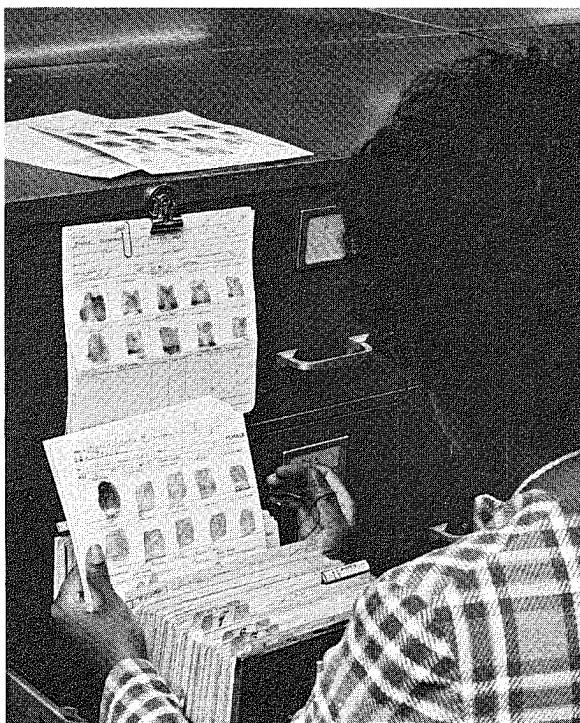
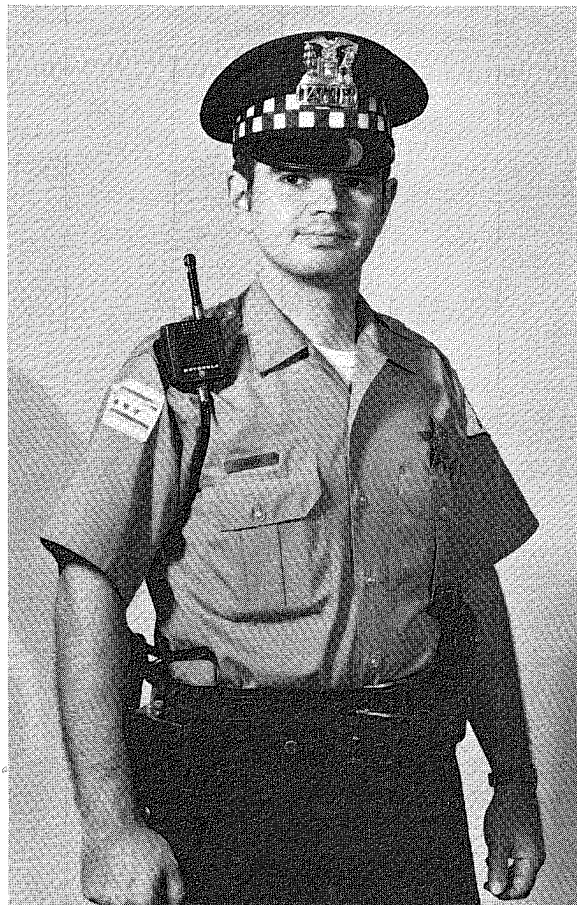
\* Hazardous violations only. Total citations issued for both hazardous and non-hazardous violations (parking, etc.) were 3,332,059.

## 21. Traffic Accidents by Type of Accident

CALENDAR YEAR, 1 JANUARY THROUGH 31 DECEMBER

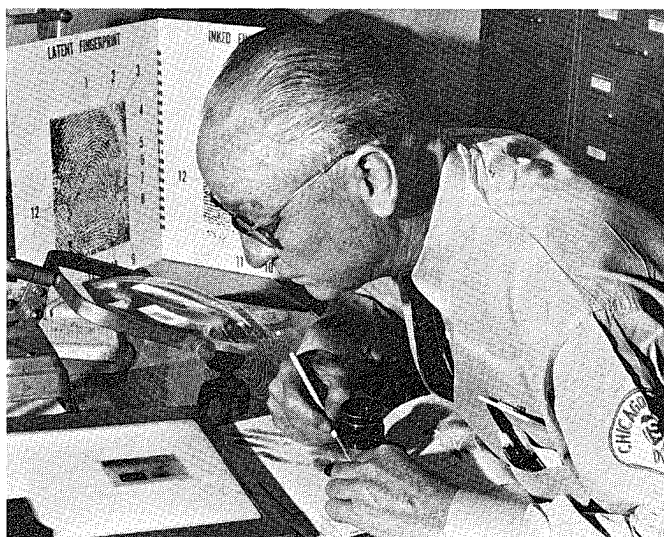
TYPE	NUMBER OF ACCIDENTS				NUMBER OF PERSONS	
	All Accidents	Fatal	Non-Fatal	Property Damage	Total Killed	Total Injured
Ran Off Road .....	5,387	51	1,617	3,719	53	2,226
Overtaken on Road .....	167	2	107	58	2	134
Struck Pedestrian .....	8,188	147	8,041	...	154	8,399
Struck Motor Vehicle in Traffic ..	108,615	64	15,277	93,274	76	26,408
Struck Parked Motor Vehicle ...	36,691	7	1,643	35,041	7	2,227
Struck Railroad Train .....	95	4	33	58	4	46
Struck Bicyclist .....	1,402	1	1,054	347	1	1,110
Struck Animal .....	46	..	7	39	..	7
Struck Fixed Object .....	1,480	13	479	988	14	657
Struck Other Object .....	383	..	54	329	..	72
Other Non-Collision .....	967	6	564	397	6	667
Other .....	1,432	..	241	1,191	..	429
TOTAL .....	164,853	295	29,117	135,441	317	42,382

In 1970 personal radios were issued to Patrol Division officers of three districts. The radio is carried on the belt, the microphone affixed at shoulder.



Above: Checking the fingerprint file.

Comparing latent and inked fingerprints.



# STAFF UNIT SERVICES

## 22. Communications Center

13-PERIOD YEAR\*

### Incoming Telephone Calls

Answered <sup>a</sup> . . . . . 3,796,710

### Radio Calls Made

Dispatching <sup>b</sup> . . . . . 2,173,994

Other (Administrative, etc.) . . . . 2,321,044

TOTAL . . . . . 4,495,038

### Messages Sent<sup>c</sup>

Facsimile . . . . . 1,075,599

Teletype . . . . . 48,312

### Point-to-Point Radio Messages<sup>d</sup>

Stolen Auto Inquiries Received. . 49,912

Other Messages Sent or Received 23,887

\* Each period 28 days. 8 Jan. 1970 through 6 Jan. 1971.

<sup>a</sup> Includes all PO 5-1313 calls received by dispatchers whether from citizens or other agencies and whether resulting in vehicles dispatched, referrals made or instructions given. Also includes transferred WA 2-4747 and 744-4000 Centrex calls.

<sup>b</sup> Radio dispatch cards made. Does not include extra (assist) cars sent through the initial dispatch.

<sup>c</sup> To districts and other Department units. Facsimile transmission used for operational messages; teletype for administrative.

<sup>d</sup> Suburban, Statewide and Nationwide.

## 23. Records Inquiries

13-PERIOD YEAR\*

Radio Dispatch Cards Sorted . . . . 2,173,994

### Field Reports

#### Case Reports<sup>a</sup>

Processed & Filed . . . . . 1,226,998

Reproduced & Distributed . . . . 12,364,025

#### Traffic Reports Processed

& Filed . . . . . 163,098

#### Report File Searches

##### Searches Made

(Official & Citizen) . . . . . 900,331

Reproduction Fees (Citizens) . \$224,264.19

### Index Cards<sup>b</sup>

In Master Files, Year End . . . . . 4,527,550<sup>c</sup>

Purged . . . . . 1,484,722<sup>c</sup>

Prepared & Filed . . . . . 1,379,620

Property Records Processed & Filed<sup>d</sup> 154,106

\* Each period 28 days. 8 Jan. 1970 through 6 Jan. 1971.

<sup>a</sup> Original and supplementary non-traffic and vice reports.

<sup>b</sup> "Alpha" files. Includes names of arrestees, victims and complainants, and wanted persons.

<sup>c</sup> Victim cards for both 1967 and 1968 were purged in 1970.

<sup>d</sup> Articles lost, stolen and recovered.

## 24. Field Inquiries

13-PERIOD YEAR\*

### Wanted Persons Inquiries

Computer .....	387,432
Manual <sup>a</sup> .....	21,126
<b>TOTAL</b> .....	<b>408,558</b>

### Stolen Auto Inquiries

Computer .....	630,865
Manual <sup>a</sup> .....	35,971
<b>TOTAL</b> .....	<b>666,836</b>

### Other Computer Inquiries<sup>b</sup> .....

96,368

### Inquiries into NCIC<sup>c</sup> .....

285,692

### Inquiries via LEADS<sup>d</sup> .....

192,938

### Warrants

Registered .....	96,291
Served .....	46,803
Extraditions and Turnovers ..	1,150

\* Each period 28 days. 8 Jan. 1970 through 6 Jan. 1971.

<sup>a</sup> Manual searches made when computer was inoperative due to maintenance, reorganization, etc. Manual searches estimated.

<sup>b</sup> Includes inquiries on Temporary Steals, Recoveries, etc.

<sup>c</sup> Inquiries into computer at National Crime Information Center, Washington, D.C., yielded 2,772 positive identifications.

<sup>d</sup> Messages via the 48-state network of the Law Enforcement Agencies Data System include vehicle registration inquiries to Springfield, Illinois.

## 25. Evidence and Recovered Property

13-PERIOD YEAR\*

### Property Recovered and Disposed of

#### Inventories<sup>a</sup>

Received .....	57,348
Disposed of .....	47,025
Year-End Balance <sup>b</sup> .....	57,562
Returned to Owners .....	7,205
Turned Over to	

Other Government Agencies. 1,791

Sold at Auctions .....

2,815

Destroyed, Narcotics .....

2,650

Destroyed, Other Property ..

44,375

#### Firearms Destroyed at Steel Works

Inventories<sup>a</sup> .....

10,056

Pieces (Units) .....

10,609

### Monies Disbursed

Owners (Cash) .....

\$353,053.06

#### Police Pension Fund<sup>c</sup>

Unclaimed Monies .....

24,456.53

Net Proceeds from Auction. .

55,804.81

#### County Treasurer

(Gambling Seizures) .....

36,664.18

**\$469,978.58**

\* Each period 28 days. 8 Jan. 1970 through 6 Jan. 1971.

<sup>a</sup> A property inventory includes up to 12 items (recorded on CPD form 23-598) taken into custody in connection with a crime. A crime may yield one or more inventories; and an item of inventory one or more units of property.

<sup>b</sup> 1969 year-end balance was 47,706.

<sup>c</sup> City of Chicago Policemen's Annuity & Benefit Fund.



## 26. Identification

13-PERIOD YEAR\*

### Fingerprints Compared to Fingerprints in Files

Criminal (Arrestees)	
Submitted .....	118,666
Found Identical .....	71,887
Non-Criminal (Applicants, etc.)	
Submitted .....	51,439
Found Identical .....	13,753
Dead, Injured, Shot, etc.	
Submitted .....	2,255
Found Identical .....	1,452

### Latent Fingerprints<sup>a</sup>

Evaluated	
Submitted .....	10,744
Found Suitable for Comparison ..	6,676
Fingerprints Compared to Latent	
Submitted .....	21,615
Found Identical .....	1,082

### Records

Arrest Reports Processed .....	259,568
Wanted Persons Notices	
Filed .....	4,230
Cancelled .....	3,285
Record Checks Made	
Inquiries at Counter .....	197,112
Inquiries by Mail .....	15,726

### Photo Services

Photos Received & Filed	
Black & White .....	56,970
Color .....	6,279
Photoprints Supplied to	
Authorized Persons .....	93,626

\* Each period 28 days. 8 Jan. 1970 through 6 Jan. 1971.

<sup>a</sup> "Dusted" and other prints obtained at crime scene. Comparisons made to determine presence of persons, criminal or other, at scene.

## 27. Automotive Pounds

13-PERIOD YEAR\*

### Number of Vehicles

On Hand, Year-End <sup>a</sup> . . .	2,558
Immediate <sup>b</sup> . . . . .	4,240
TOTAL . . . . .	6,798

### Towed

Immediate <sup>b</sup> . . . . .	42,361
Abandoned . . . . .	49,897
TOTAL . . . . .	92,258

### Released to Owners

Immediate <sup>b</sup> . . . . .	32,192
Abandoned . . . . .	3,653
TOTAL . . . . .	35,845

### Confiscated & Released

to Sheriff . . . . .	461
Sold at Auction . . . . .	2,059
Sold for Scrap . . . . .	53,150

### Monies Received

Auction <sup>c</sup> . . . . .	\$ 215,157.50
Scrap <sup>d</sup> . . . . .	589,591.07
Towing . . . . .	683,550.00
Storage . . . . .	404,708.90
TOTAL . . . . .	\$1,893,007.47

\* Each period 28 days. 8 Jan. 1970 through 6 Jan. 1971.

<sup>a</sup> Total capacity: 8,000 in seven facilities.

<sup>b</sup> Towed immediately because stolen, property of prisoner, involved in accident, traffic hazard (including abandoned noted as hazard), etc.

<sup>c</sup> Gross income (auctioneer's commission and expenses not deducted).

<sup>d</sup> Vehicles sold by City Purchasing Agent under contract.

## 28. Vehicles

CALENDAR YEAR, 1 JANUARY THROUGH 31 DECEMBER

	NUMBER PURCHASED <sup>a</sup>	NUMBER ON HAND, YEAR-END
Uniform, 6-Cylinder . . . . .	451	849
Uniform, 8-Cylinder . . . . .	27	72
Unmarked, 6- and 8-Cylinder . . . . .	178	699
Squadrols . . . . .	60	69
Prisoner Vans (Large) <sup>b</sup> . . . . .	0	12
Other Trucks . . . . .	0	65
Motorcycles, 3-Wheel . . . . .	75	198
Motorcycles, 2-Wheel <sup>c</sup> . . . . .	0	10
Expropriated . . . . .	...	26
TOTAL ASSIGNED . . . . .	799	2,000
Pool (Temporary Replacements) <sup>d</sup> . . . . .	...	460
TOTAL, ALL VEHICLES . . . . .	799	2,460

Total Mileage . . . . . 60,445,735

<sup>a</sup> Total expenditures for new vehicles: \$1,746,000.80.

<sup>b</sup> Air conditioned; suitable for transport of sworn personnel to and from special missions.

<sup>c</sup> Unclaimed, abandoned or stolen cars retained for police undercover use.

<sup>d</sup> Includes: vehicles for administrative use; temporary replacements for vehicles being serviced; and vehicles out of service.



Equipment for every requirement: three-wheelers are ideal for park patrol.

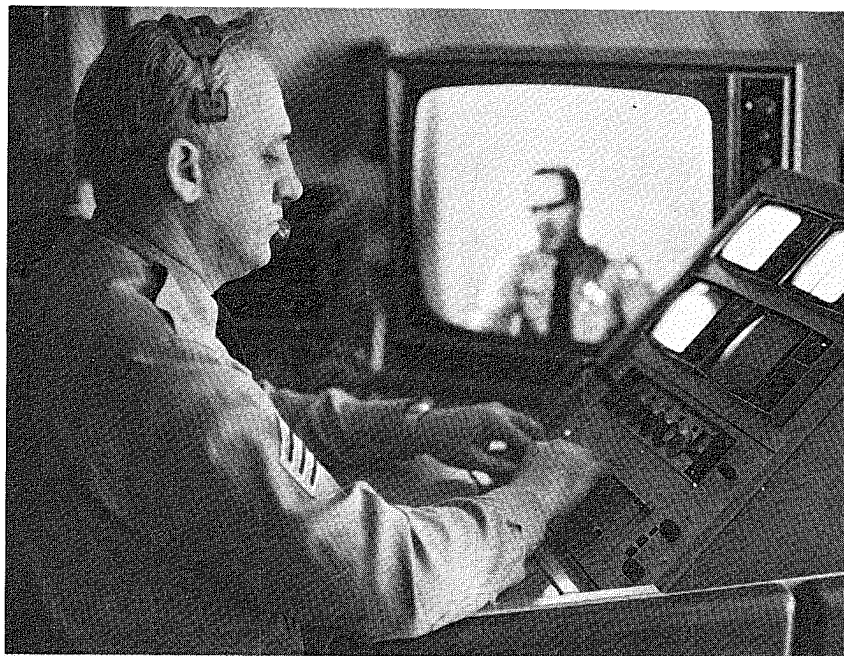
## 29. Animal Care

13-PERIOD YEAR\*

Stray Dog Complaints Received . . . .	13,739
Stray Animals Caught . . . . .	7,923
Animal Bite Reports Processed . . . .	14,160
Biter Animals Impounded for	
Rabies Observation <sup>a</sup> . . . . .	3,757
Rabid Animal Cases . . . . .	None
Court Citations Issued . . . . .	981
Total Number of Animals Handled . .	11,680

\* Each period 28 days. 8 Jan. 1970 through 6 Jan. 1971.

<sup>a</sup> Does not include animals impounded by private veterinarians.



Manning the console for a TV training program at the Academy.

## 30. Training

CALENDAR YEAR, 1 JANUARY THROUGH 31 DECEMBER

	NUMBER OF STUDENTS	MAN-DAYS
<b>Recruits</b>		
Men, Chicago .....	1,136	136,305
Men, Suburban .....	43	2,035
Women, Chicago .....	16	1,680
<b>Special Students</b> .....	100	2,000
<b>Pre-Service</b> .....	557	8,643
<b>In-Service</b> .....	2,131	9,576
<b>Specialized</b> .....	2,025	7,129
<b>Civilian</b> .....	764	3,467
<b>TOTAL</b> .....	6,772	170,835

# DEPARTMENT RESOURCES

## 31. Budget Appropriations

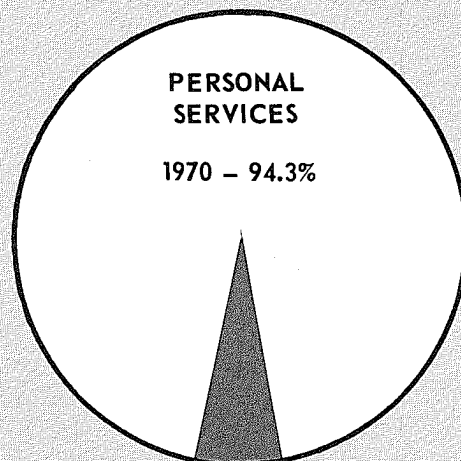
CALENDAR YEAR, 1 JANUARY THROUGH 31 DECEMBER

Personal Services (Salaries, Wages, etc.) .....	\$180,211,235.00
Contractual Services <sup>a</sup> .....	4,258,407.00
Travel .....	21,048.00
Commodities <sup>b</sup> .....	3,196,484.00
Equipment (Automotive, Communications, etc.) .....	3,045,390.00
Improvements (Buildings) .....	109,950.00
Specific Purposes <sup>c</sup> .....	50,000.00
Contingencies .....	100,000.00
<b>TOTAL</b> .....	<b>\$190,992,514.00</b>

<sup>a</sup> Rentals and repairs of equipment; professional and technical services; utilities; etc.

<sup>b</sup> Gasoline, repair parts, material, supplies, etc.

<sup>c</sup> Special, one-time allocations; also pension fund.



ALL OTHER  
1970 - 5.7%



## 32. Salary Schedules

CALENDAR YEAR, 1 JANUARY THROUGH 31 DECEMBER

Superintendent . . . . .	\$32,500.00
First Deputy Superintendent <sup>a</sup> . . . . .	31,000.00
Deputy Superintendent . . . . .	29,500.00
Chief . . . . .	26,832.00
Asst. Deputy Superintendent, Deputy Chief . . . . .	23,208.00
Director, Commander . . . . .	20,064.00
Coordinator (Human Relations, Community Relations) . . . . .	17,376.00
Captain . . . . .	18,096.00 <sup>c</sup>
Lieutenant . . . . .	16,416.00 <sup>c</sup>
Sergeant . . . . .	14,184.00 <sup>c</sup>
Investigator (Detective), Youth Officer, etc. . . . .	13,008.00 <sup>c</sup>
Patrolman, Policewoman, Police Matron <sup>b</sup> . . . . .	12,120.00 <sup>c</sup>
Cadet <sup>d</sup> . . . . .	5,604.00
Crossing Guard <sup>e</sup> . . . . .	3.60

\* Maximum annual rates unless otherwise noted.

<sup>a</sup> Established 1 January 1970.

<sup>b</sup> Progressive rates for patrolman rank:

First six months . . . . .	\$ 9,600.00
After six months . . . . .	10,080.00
After 18 months . . . . .	10,572.00
After 30 months . . . . .	11,184.00
After 42 months (maximum rate, above) . . . . .	12,120.00

<sup>c</sup> Longevity increases of approximately 2% (not shown) were established 1 January 1970. Effective for captain, lieutenant, sergeant and investigator ranks after one year at the maximum rate in the same rank and after five years of continuous service. Effective for patrolman rank after 12 months at the maximum rate (five years of continuous service).

<sup>d</sup> Maximum annual rates before reaching the age - 20 maximum (after 18 months and up to 30 months).  
First six months: \$5,088.00 After six months: \$5,340.00.

<sup>e</sup> Maximum hourly rate after ten years. Starting rate: \$2.67.



## 33. Population and Land Areas

		POPULATION*		AREA	
		NUMBER	RANK	SQ. MILES	RANK
1	Central . . . . .	9,775	21	2.895	21
2	Wentworth . . . . .	145,799	14	4.751	18
21	Prairie . . . . .	100,020	19	5.061	17
AREA 1 (Total) .		255,594	6	12.707	6
3	Grand Crossing .	139,697	16	5.522	15
4	South Chicago . .	177,796	8	26.309	2
5	Kensington . . . .	195,183	5	20.036	4
6	Gresham . . . . .	179,837	7	16.225	5
AREA 2 (Total) .		692,513	2	68.092	1
7	Englewood . . . .	159,411	12	6.534	12
8	Chicago Lawn . .	229,717	2	23.609	3
9	Deering . . . . .	166,411	11	12.663	6
AREA 3 (Total) .		555,539	4	42.806	3
10	Marquette . . . . .	155,030	13	7.207	11
11	Fillmore . . . . .	129,901	17	4.750	19
12	Monroe . . . . .	85,873	20	6.282	13
13	Wood . . . . .	140,135	15	5.153	16
AREA 4 (Total) .		510,939	5	23.392	4
14	Shakespeare. . .	168,845	10	7.752	10
15	Austin . . . . .	195,777	4	11.948	7
16	Jefferson Park . .	215,901	3	28.417	1
17	Albany Park . . .	169,709	9	10.540	9
AREA 5 (Total) .		750,232	1	58.657	2
18	East Chicago . . .	108,738	18	4.250	20
19	Town Hall . . . .	190,146	6	5.703	14
20	Foster Avenue . .	303,256	1	11.637	8
AREA 6 (Total) .		602,140	3	21.590	5
CITY TOTAL . . . . .		3,366,957		227.244	

\* District and area population figures, based on preliminary 1970 census tract counts, are estimated.

## 34. Department Locations

For emergency service, phone PO 5-1313; for all other calls, dial numbers shown below.

### DEPARTMENT HEADQUARTERS

1121 S. State St. (60605)

Non-emergency phone calls:

Weekdays—see detailed listing in Telephone Directory

Nights & weekends, 744-6301

### Traffic Division Headquarters

54 W. Hubbard St. (60611), 744-4804

### Districts

#### IN FIRST AREA:

1st — Central, 11 E. 11th St. (60605), 744-6230

2nd — Wentworth, 5101 S. Wentworth Ave. (60609), 744-8366

21st — Prairie, 300 E. 29th St. (60606), 744-8340

#### IN SECOND AREA:

3rd — Grand Crossing, 831 E. 75th St. (60619), 744-8201

4th — South Chicago, 2938 E. 89th St. (60617), 744-8205

5th — Kensington, 200 E. 115th St. (60628), 744-8210

6th — Gresham, 819 W. 85th St. (60620), 744-8214

#### IN THIRD AREA:

7th — Englewood, 6120 S. Racine Ave. (60636), 744-8220

8th — Chicago Lawn, 3515 W. 63rd St. (60629), 744-8224

9th — Deering, 3501 S. Lowe Ave. (60609), 744-8227

#### IN FOURTH AREA:

10th — Marquette, 2259 S. Damen Ave. (60608), 744-8246

11th — Fillmore, 4001 W. Fillmore St. (60624), 744-8386

12th — Monroe, 100 S. Racine Ave. (60607), 744-8396

13th — Wood, 937 N. Wood St. (60622), 744-8350

#### IN FIFTH AREA:

14th — Shakespeare, 2138 N. California Ave. (60647), 744-8290

15th — Austin, 5327 W. Chicago Ave. (60651), 744-8300

16th — Jefferson Park, 5430 W. Gale Ave. (60630), 744-8286

17th — Albany Park, 4461 N. Pulaski Rd. (60630), 744-8347

#### IN SIXTH AREA:

18th — East Chicago, 113 W. Chicago Ave. (60610), 744-8230

19th — Town Hall, 3600 N. Halsted St. (60613), 744-8320

20th — Foster Ave., 1940 W. Foster Ave. (60640), 744-8330

### Area Units: Criminal Investigation Division, Youth Division, Traffic Division, and Special Operations Group

1st — 5101 S. Wentworth Ave. (60609): CID, 744-8384; YD, 744-8385; TD, 744-8318; and SOG, 744-8298

2nd — 9059 S. Cottage Grove Ave. (60619): CID, 744-8275; YD, 744-8276; TD, 744-8277; and SOG, 744-8270

3rd — 3900 S. California Ave. (60632): CID, 744-8284; YD, 744-8285; TD, 744-8345

4th — 943 W. Maxwell St. (60608): CID, 744-8255; YD, 744-8256; TD, 744-8257; and SOG, 744-8250

5th — 2138 N. California Ave. (60647): CID, 744-8364; YD, 744-8365; and TD, 744-8293

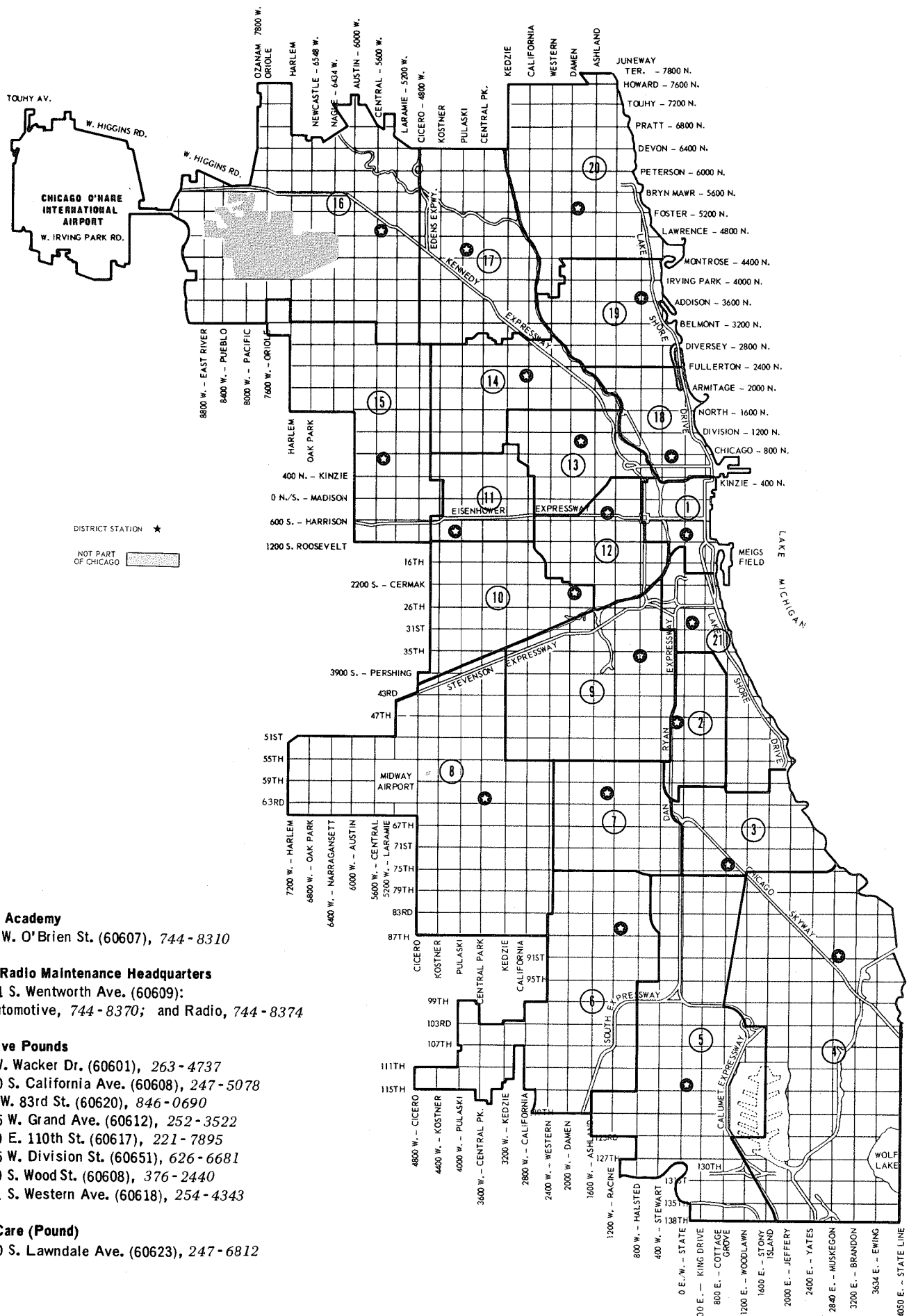
6th — 3801 N. Damen Ave. (60618): CID, 744-8265; YD, 744-8266; TD, 744-8267; and SOG, 744-8260

### Other Special Operations Group Units

Canine and Marine Sections

1179 S. State St. (60605), 744-8217

Detail Section, 943 W. Maxwell St. (60608), 744-8250



#### Training Academy

720 W. O'Brien St. (60607), 744-8310

#### Motor & Radio Maintenance Headquarters

5101 S. Wentworth Ave. (60609):

Automotive, 744-8370; and Radio, 744-8374

#### Automotive Pounds

11 W. Wacker Dr. (60601), 263-4737

3000 S. California Ave. (60608), 247-5078

650 W. 83rd St. (60620), 846-0690

2555 W. Grand Ave. (60612), 252-3522

1600 E. 110th St. (60617), 221-7895

4615 W. Division St. (60651), 626-6681

3120 S. Wood St. (60608), 376-2440

3201 S. Western Ave. (60618), 254-4343

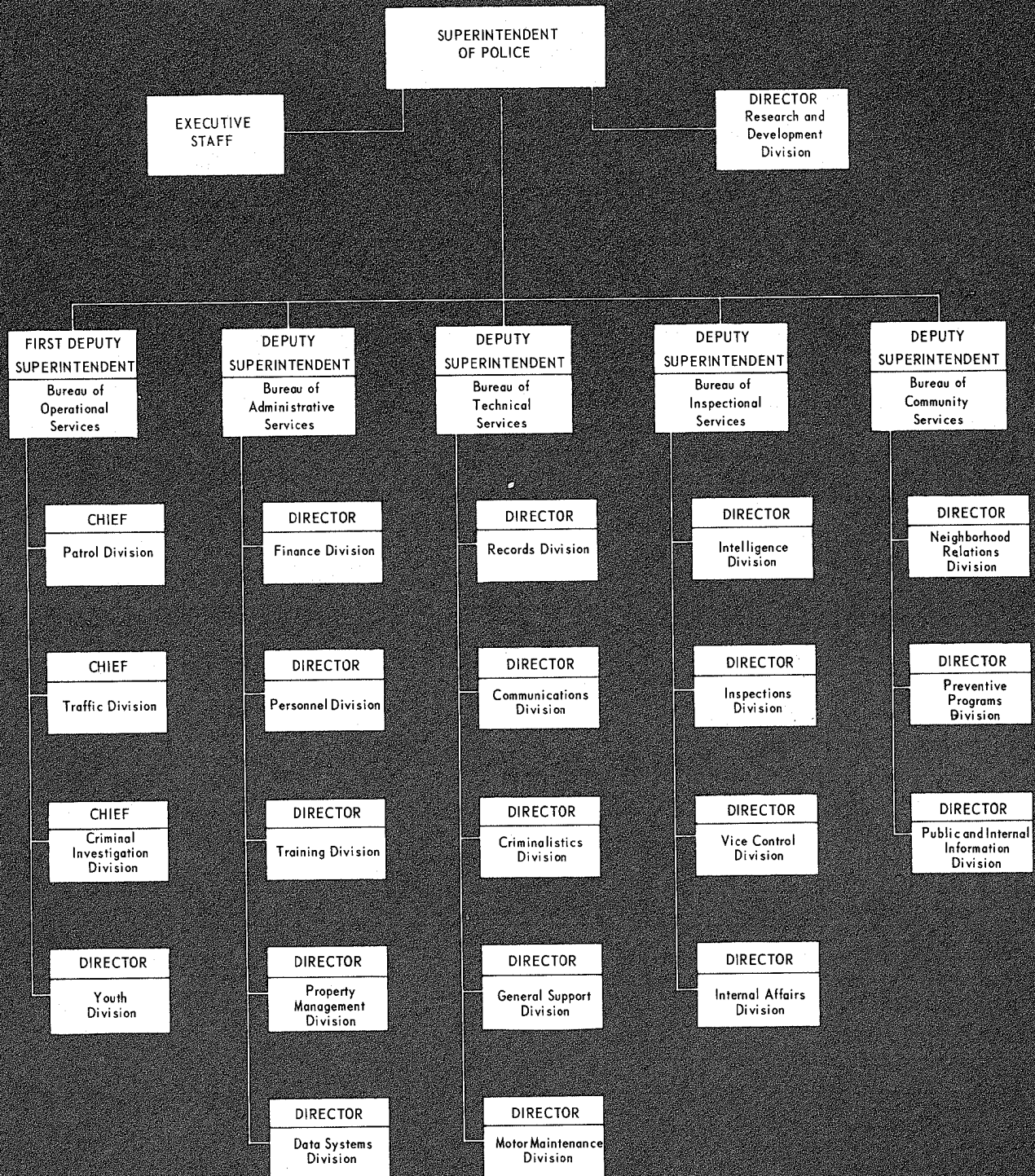
#### Animal Care (Pound)

3400 S. Lawndale Ave. (60623), 247-6812



# ORGANIZATION

## CHICAGO POLICE DEPARTMENT



25 SEPTEMBER 1970